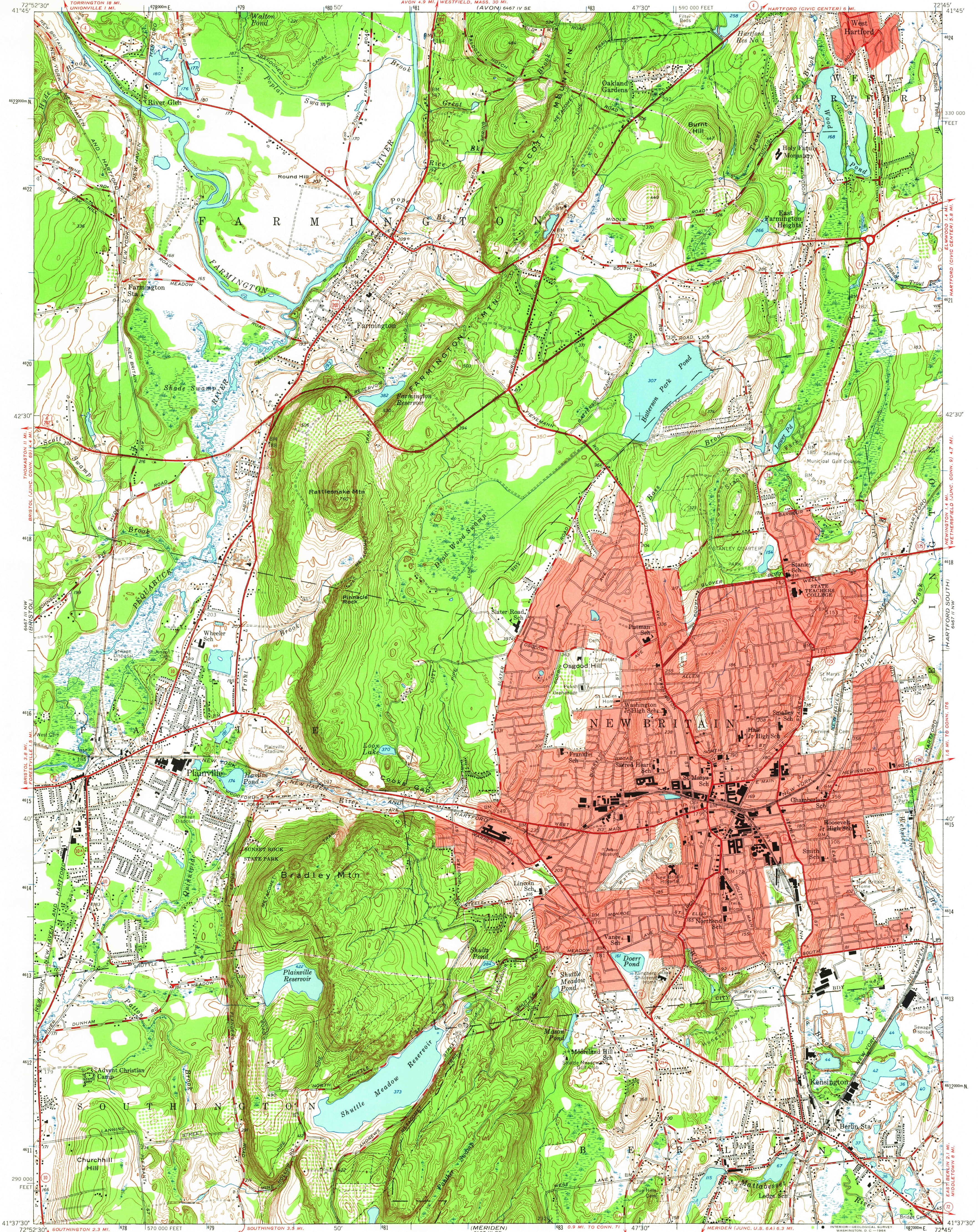
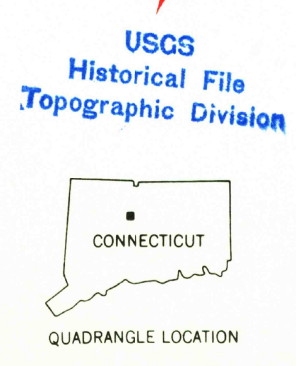
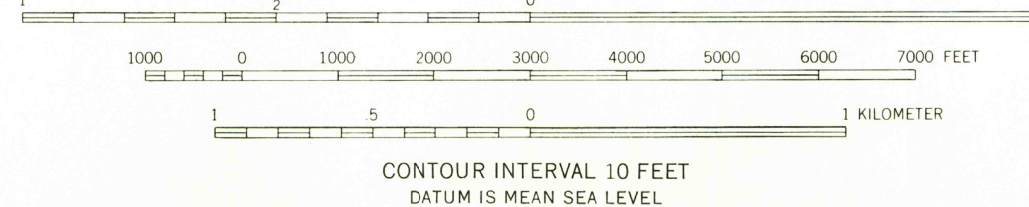
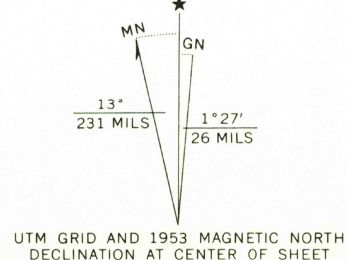


UNITED STATES  
DEPARTMENT OF THE INTERIOR  
GEOLOGICAL SURVEY

NEW BRITAIN QUADRANGLE  
CONNECTICUT—HARTFORD CO  
7.5 MINUTE SERIES (TOPOGRAPHIC)



Mapped by the Geological Survey and City of Hartford  
Edited and published by the Geological Survey  
Control by USGS, USC&GS, and Connecticut Geodetic Survey  
Culture and drainage in part compiled from aerial photographs  
taken 1941. Topography by plane-table surveys 1943. Revised  
1953 from 1951 photography  
Polyconic projection. 1927 North American datum  
10,000-foot grid based on Connecticut coordinate system  
Red tint indicates areas in which only  
landmark buildings are shown  
1000-meter Universal Transverse Mercator grid ticks,  
zone 18, shown in blue



ROAD CLASSIFICATION			
Heavy-duty	4 LANE 6 LANE	Light-duty	
Medium-duty	4 LANE 6 LANE	Unimproved dirt	
	U. S. Route	State Route	

NEW BRITAIN, CONN.  
N4137.5—W7245/7.5

1953  
AMS 6467 III NE—SERIES V816

THIS MAP COMPLIES WITH NATIONAL MAP ACCURACY STANDARDS  
FOR SALE BY U. S. GEOLOGICAL SURVEY, WASHINGTON 25, D. C.  
A FOLDER DESCRIBING TOPOGRAPHIC MAPS AND SYMBOLS IS AVAILABLE ON REQUEST

OCT 9 1964  
8155  
COPY  
TOPOGRAPHIC DIVISION