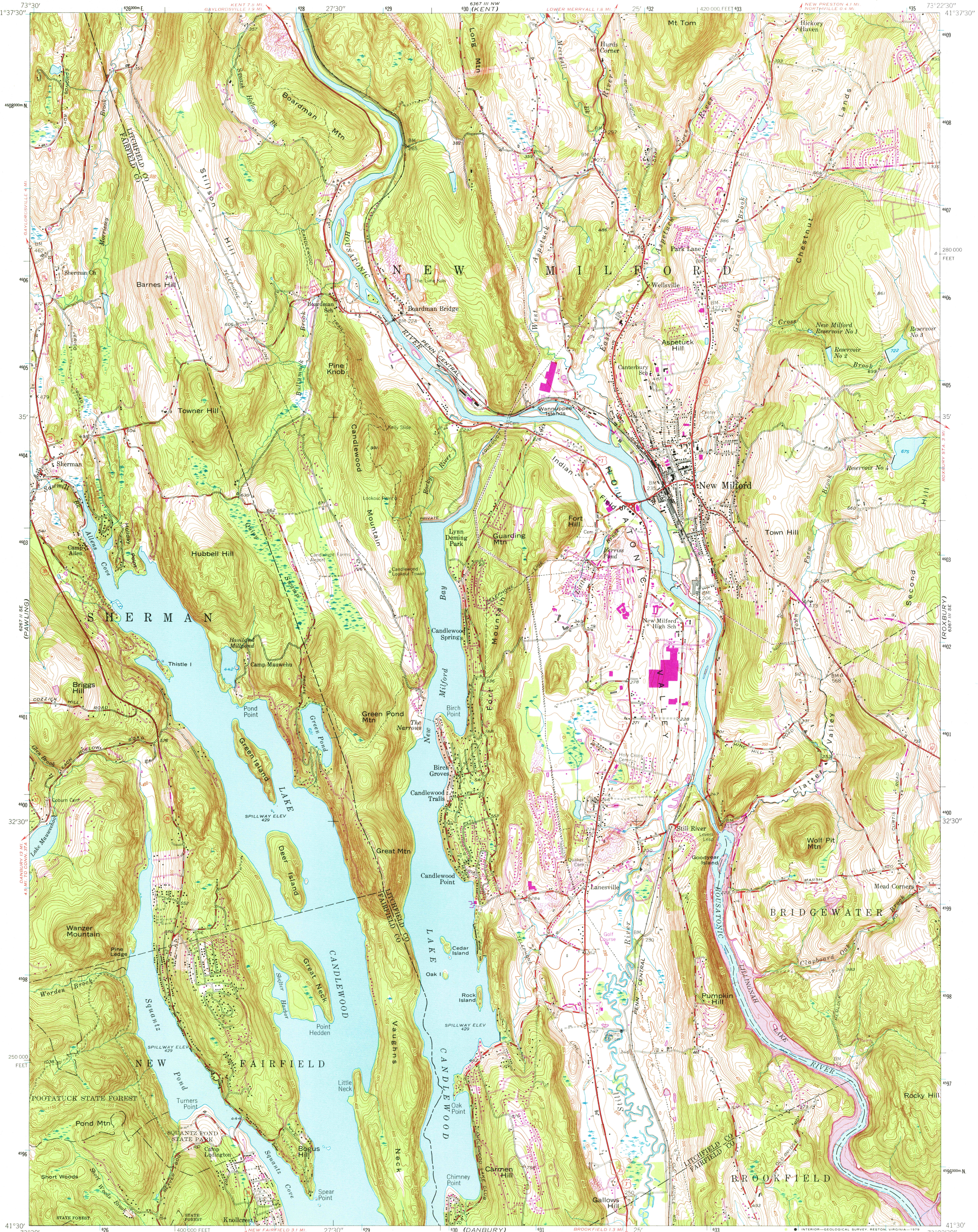
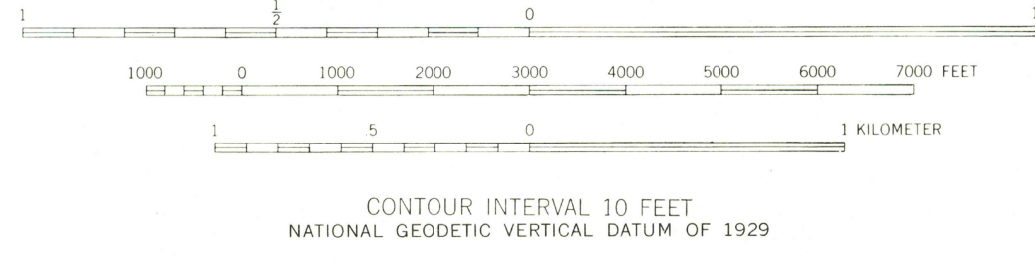
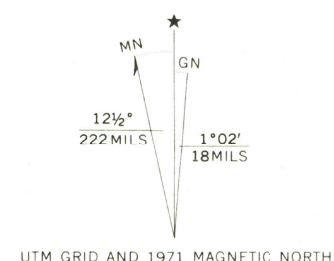




(NEW PRESTON)
6.667 IN. NE



Mapped, edited, and published by the Geological Survey
Control by USGS, USC&GS, and Connecticut Geodetic Survey
Topography from aerial photographs by multiplex methods
Aerial photographs taken 1944. Field check 1948
Revised 1955
Polyconic projection. 1927 North American datum
10,000-foot grid based on Connecticut coordinate system
1000-meter Universal Transverse Mercator grid ticks, zone 18,
shown in blue
Revisions shown in purple compiled in cooperation with
Connecticut Highway Department from aerial photographs
taken 1970 and 1971. This information not field checked



ROAD CLASSIFICATION
Heavy-duty ——— Light-duty ———
Medium-duty ——— Unimproved dirt ———
U.S. Route ——— State Route ———

USGS
Historical File
Topographic Division

NEW MILFORD, CONN.
N4130 W7322.5/7.5
1955
PHOTOREVISED 1971
AMS 6367 III SW—SERIES V816

There may be private inholdings within the boundaries of
the National or State reservations shown on this map

THIS MAP COMPLIES WITH NATIONAL MAP ACCURACY STANDARDS
FOR SALE BY U.S. GEOLOGICAL SURVEY, RESTON, VIRGINIA 22092
A FOLDER DESCRIBING TOPOGRAPHIC MAPS AND SYMBOLS IS AVAILABLE ON REQUEST

MAY 11 1979