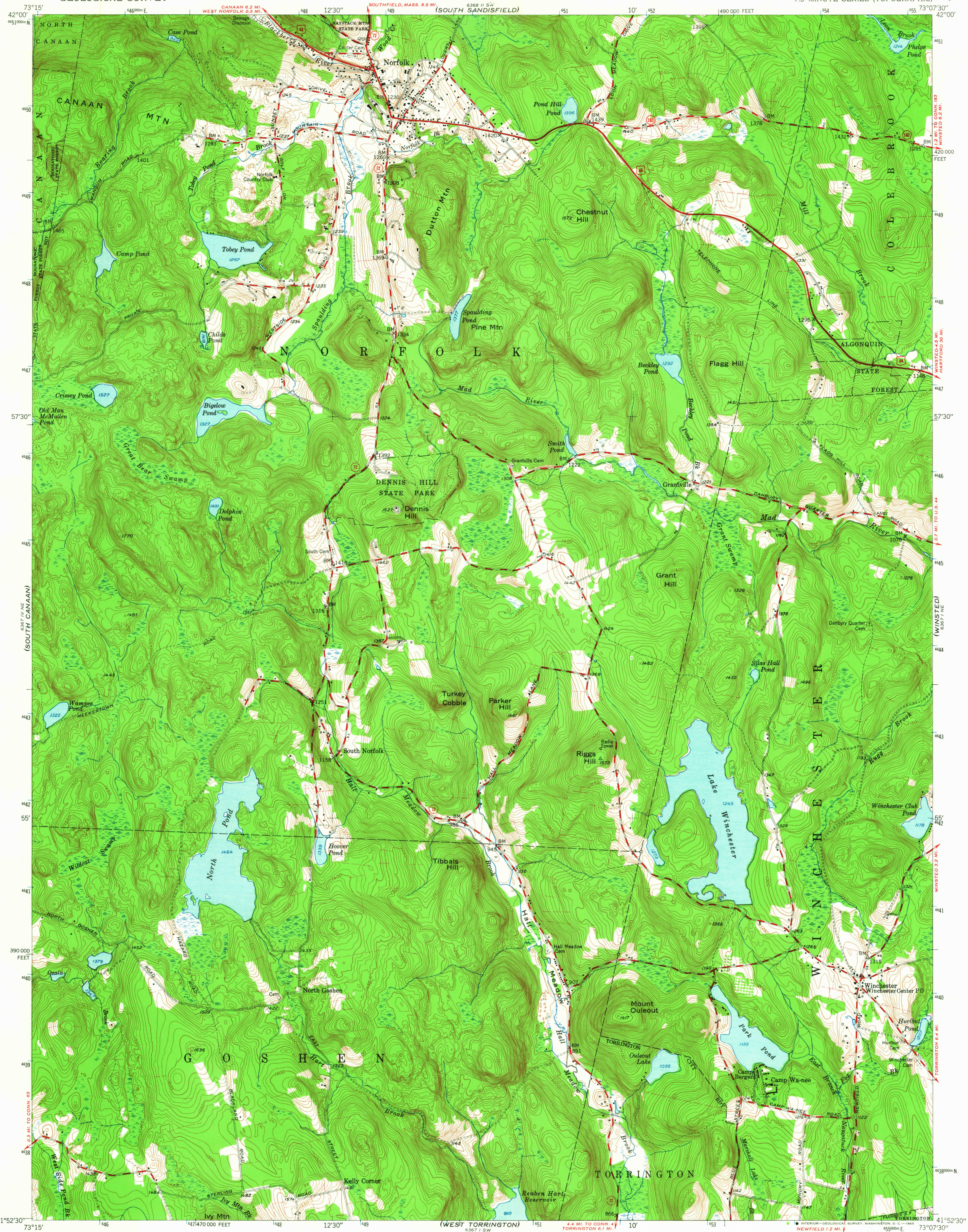
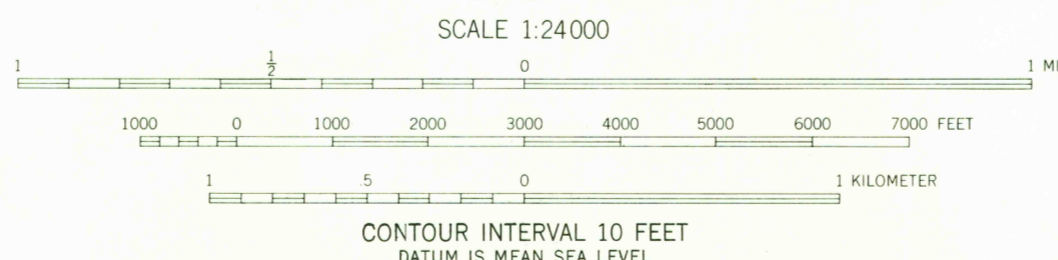
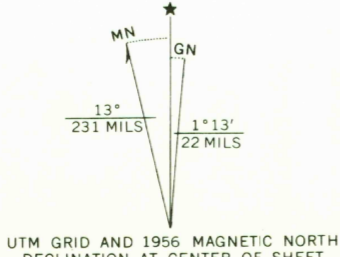


6.987 IV NE
(TOLLAND)



Mapped, edited, and published by the Geological Survey
Control by USGS, USC&GS, and Connecticut Geodetic Survey
Topography from aerial photographs by multiplex methods
Aerial photographs taken 1944. Field check 1948
Revised 1956
Polyconic projection. 1927 North American datum
10,000-foot grid based on Connecticut coordinate system
1000-meter Universal Transverse Mercator grid ticks,
zone 18, shown in blue
Fine red dashed lines indicate selected fence and field lines
visible on aerial photographs. This information is unchecked



ROAD CLASSIFICATION

Heavy-duty	Light-duty
Medium-duty	Unimproved dirt
U. S. Route	State Route

U.S.G.S. USCS Historical File Topographic Division

NORFOLK, CONN.
N4152.5-W7307.5/7.5
1956

AMS 6367 1 NW—SERIES V816

THIS MAP COMPLIES WITH NATIONAL MAP ACCURACY STANDARDS
FOR SALE BY U. S. GEOLOGICAL SURVEY, WASHINGTON 25, D. C.
A FOLDER DESCRIBING TOPOGRAPHIC MAPS AND SYMBOLS IS AVAILABLE ON REQUEST

3675
APR 1 1965