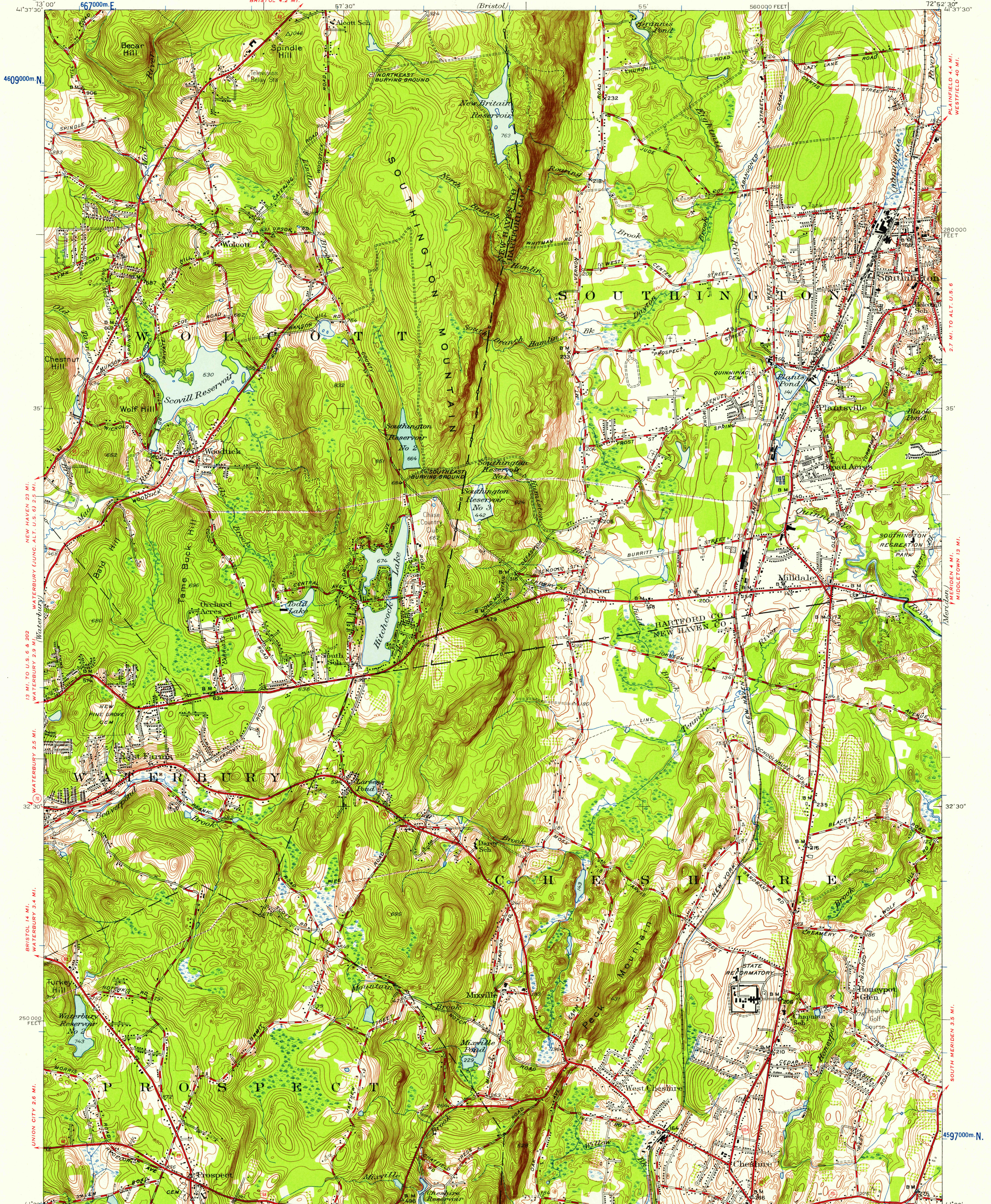
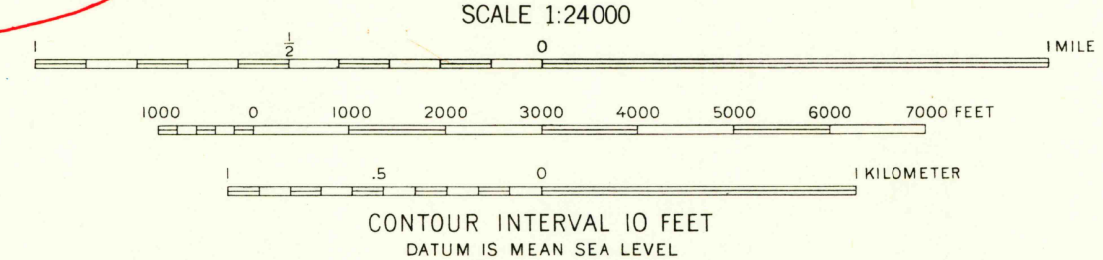


UNITED STATES
DEPARTMENT OF THE INTERIOR
GEOLOGICAL SURVEY

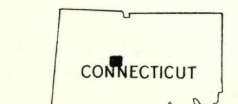
SOUTHINGTON QUADRANGLE
CONNECTICUT
7.5-MINUTE SERIES (TOPOGRAPHIC)



Mapped, edited, and published by the Geological Survey
Control by USGS, USCGS, and Connecticut Geodetic Survey
Topography by plane-table surveys 1943-1944. Revised 1955
Polyconic projection, 1927 North American datum
10,000-foot grid based on Connecticut coordinate system
1000 meter Universal Transverse Mercator Grid ticks,
zone 18, shown in blue



ROAD CLASSIFICATION
Heavy-duty ——— Light-duty ———
Medium-duty ——— Unimproved dirt ———
U.S. Route ——— State Route ———



U.S.G.S. SOUTHINGTON, CONN.
N4130-W7252.5/15
1955
FILE COPY
TOPOGRAPHIC DIVISION

THIS MAP COMPLIES WITH NATIONAL MAP ACCURACY STANDARDS
FOR SALE BY U.S. GEOLOGICAL SURVEY, WASHINGTON 25, D.C.
A FOLDER DESCRIBING TOPOGRAPHIC MAPS AND SYMBOLS IS AVAILABLE ON REQUEST

OCT 15 1958