

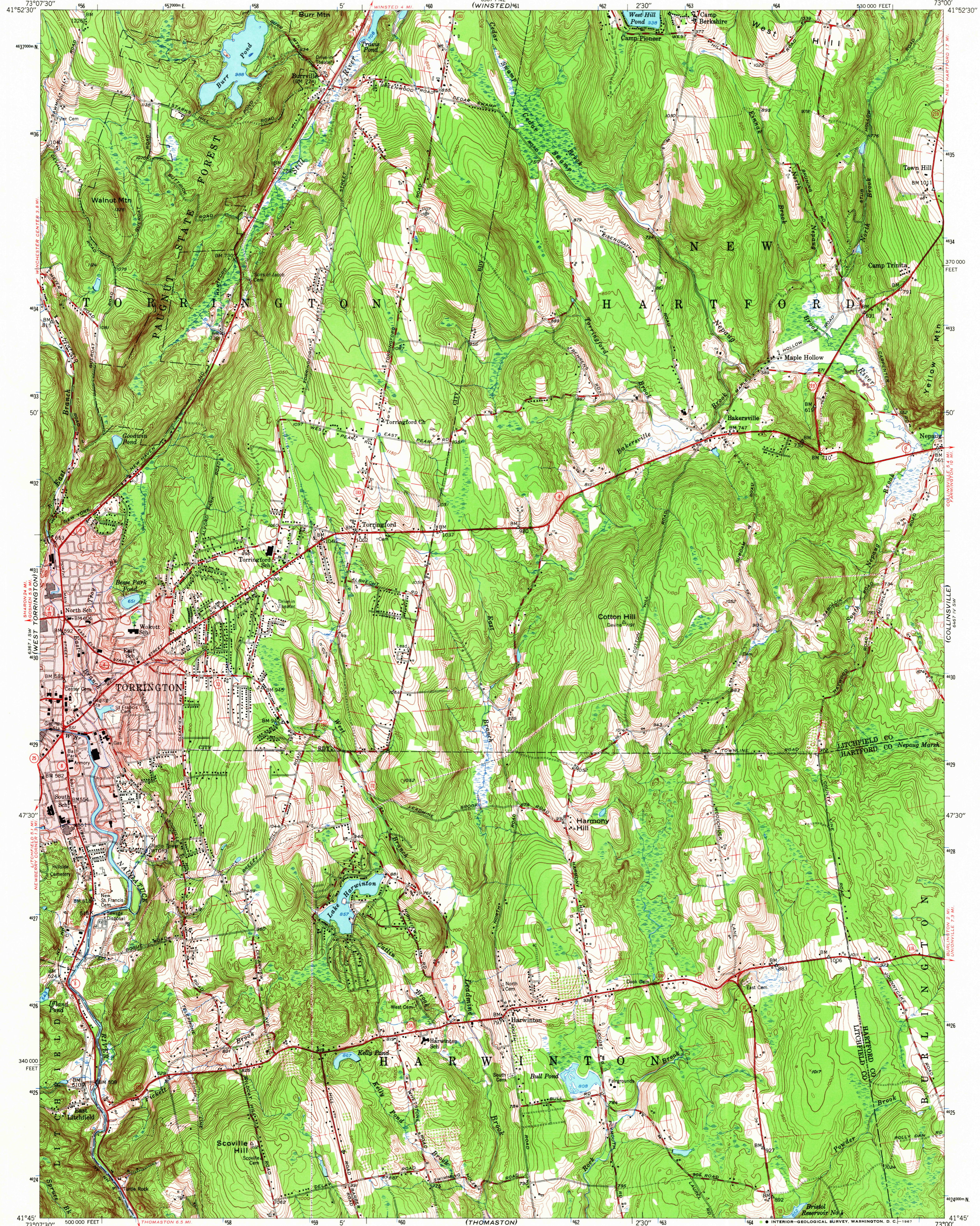
(NORFOLK)

UNITED STATES  
DEPARTMENT OF THE INTERIOR  
GEOLOGICAL SURVEY

STATE OF CONNECTICUT  
HIGHWAY DEPARTMENT

TORRINGTON QUADRANGLE  
CONNECTICUT  
7.5 MINUTE SERIES (TOPOGRAPHIC)

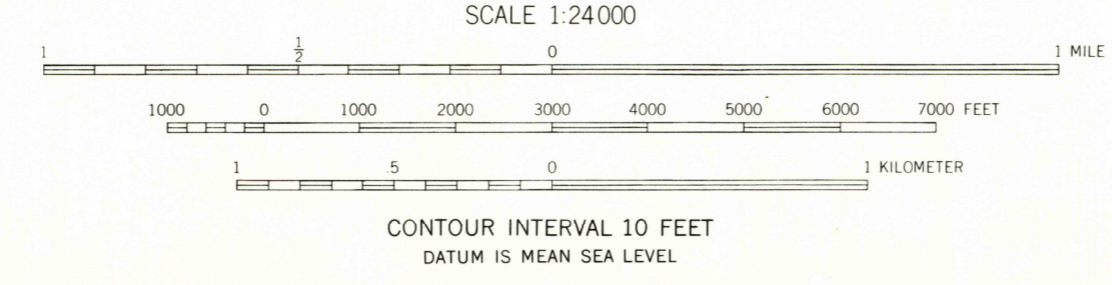
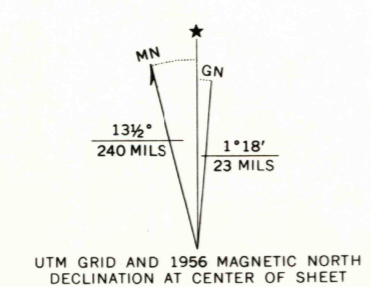
(NEW HARTFORD)



Mapped, edited, and published by the Geological Survey  
Control by USGS, USC&GS, and Columbia University  
Topography from aerial photographs by multiplex methods  
Aerial photographs taken 1944. Field check 1948  
Revised 1956

Polyconic projection. 1927 North American datum  
10,000-foot grid based on Connecticut coordinate system  
1000-meter Universal Transverse Mercator grid ticks,  
zone 18, shown in blue

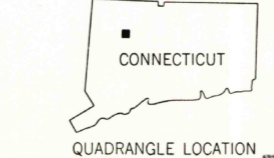
Fine red dashed lines indicate selected fence and field lines  
visible on aerial photographs. This information is unchecked  
Red tint indicates area in which only  
landmark buildings are shown



USGS  
Historical File  
Topographic Division

ROAD CLASSIFICATION

Heavy-duty	Light-duty
Medium-duty	Unimproved dirt
State Route	



U.S.G.S. TORRINGTON, CONN.  
N4145-W7300/7.5  
1956  
TOPOGRAPHIC DIVISION AMS 6367 I SE—SERIES V816

THIS MAP COMPLIES WITH NATIONAL MAP ACCURACY STANDARDS  
FOR SALE BY U.S. GEOLOGICAL SURVEY, WASHINGTON, D. C. 20242  
A FOLDER DESCRIBING TOPOGRAPHIC MAPS AND SYMBOLS IS AVAILABLE ON REQUEST

5110