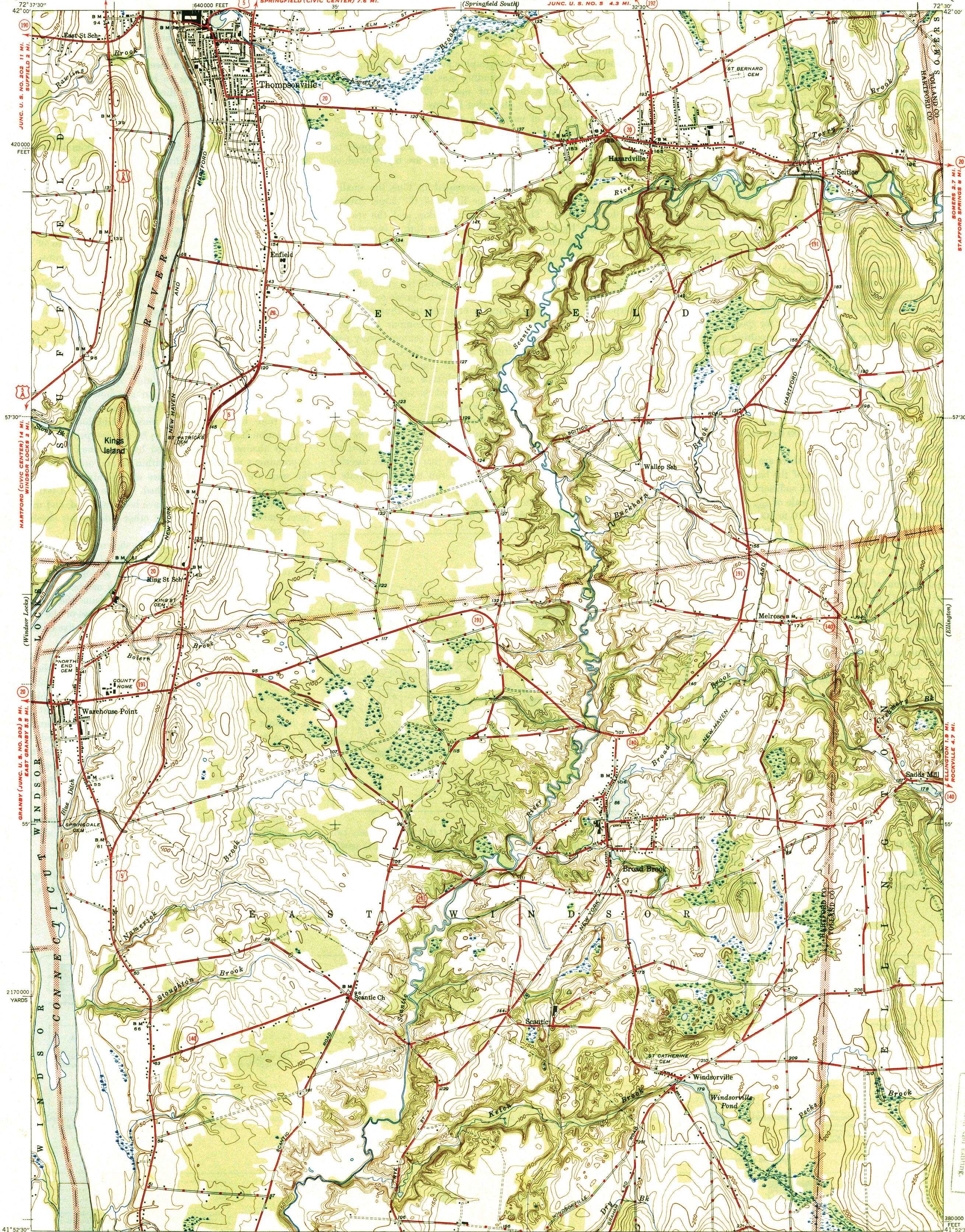


U. S. G. S.
FILE COPY
Inspection and Editing.

WAR DEPARTMENT
CORPS OF ENGINEERS, U. S. ARMY

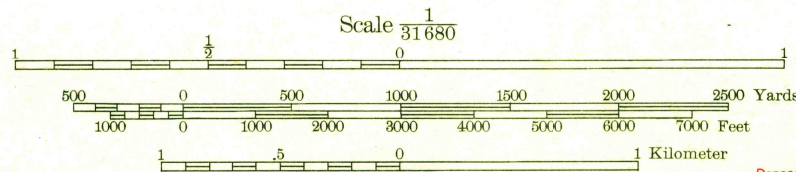
CONNECTICUT
BROAD BROOK QUADRANGLE
7½-MINUTE SERIES

UNITED STATES
DEPARTMENT OF THE INTERIOR
GEOLOGICAL SURVEY



Topography by E. R. Battean, N. D. Robert,
and Ray Whittemore
EAST HARTFORD 7.3 MI.
HARTFORD (CIVIC CENTER) 9.3 MI.
NEW HAVEN (CIVIC CENTER) 4.4 MI.

TRUE NORTH
MAGNETIC NORTH
APPROXIMATE MEAN
DECLINATION, 1943



Contour interval 10 feet
Datum is mean sea level

USGS
Historical File
Topographic Division

ROAD CLASSIFICATION
1943
Dependable hard-surface
heavy-duty road
Unsurfaced, graded
Secondary hard-surface
all-weather road
Dirt road
Loose surface, graded
Unsurfaced, graded
Dry weather roads
Dirt road
More than two lanes indicated along road with tick at point of change

Polyconic projection. 1927 North American datum
5000 yard grid based on U. S. zone system, A
10000 foot grid based on Connecticut
rectangular coordinate system

BROAD BROOK, CONN.
Edition of 1944
N4152.5-W7230/7.5

MAR 13 1944

3110