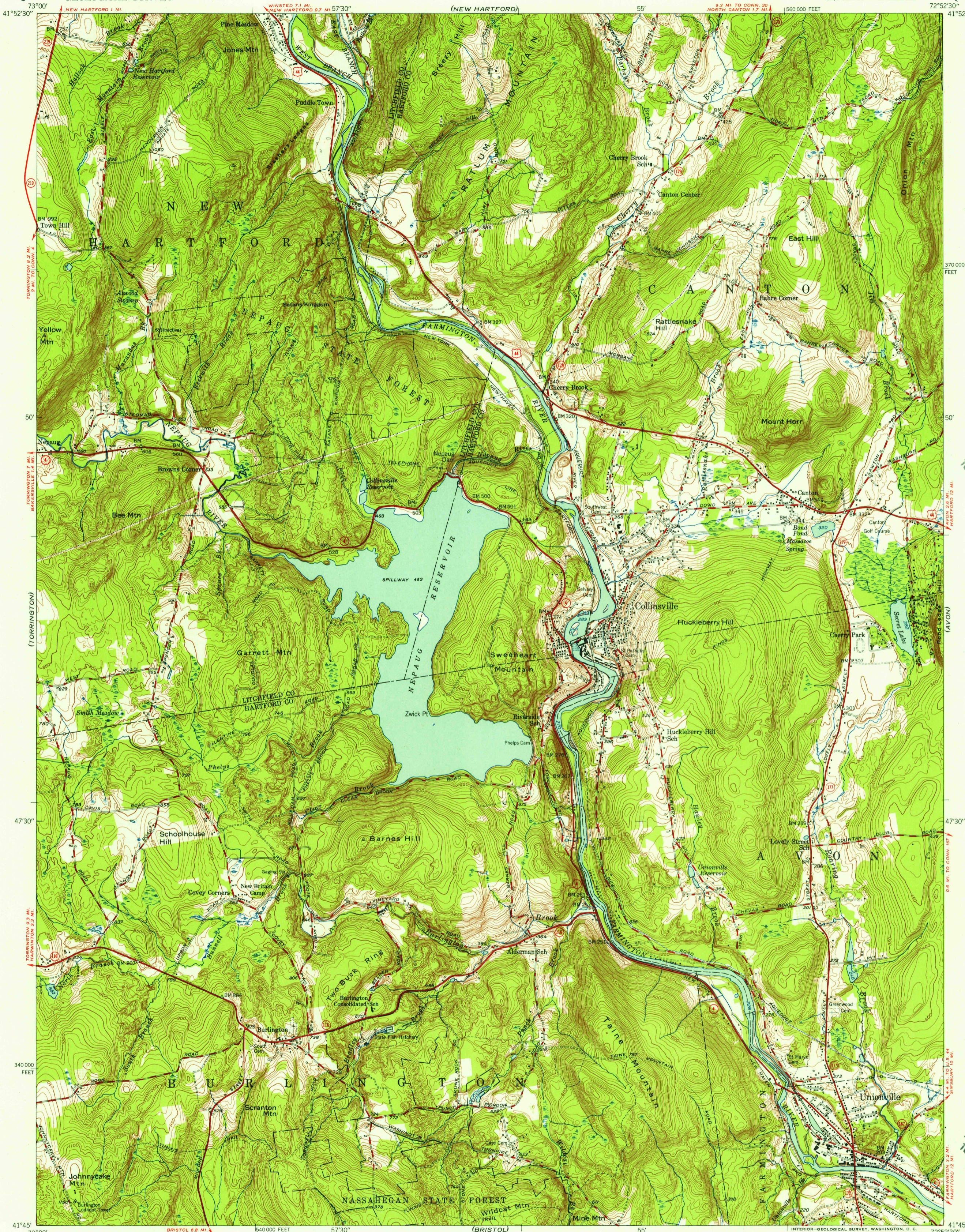
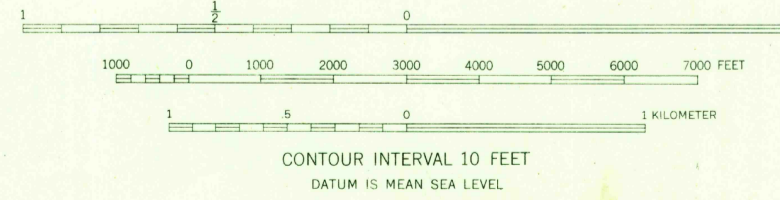


UNITED STATES  
DEPARTMENT OF THE INTERIOR  
GEOLOGICAL SURVEY

COLLINSVILLE QUADRANGLE  
CONNECTICUT  
7.5 MINUTE SERIES (TOPOGRAPHIC)  
SW/4 GRANBY 15' QUADRANGLE



Mapped, edited, and published by the Geological Survey  
Control by USGS, USC&GS, and Connecticut Geodetic Survey  
Topography from aerial photographs by multiplex methods  
Aerial photographs taken 1944. Field check 1948  
Polyconic projection. 1927 North American datum  
10,000-foot grid based on Connecticut coordinate system



USGS  
Historical File  
Topographic Division

ROAD CLASSIFICATION  
HARD-SURFACE ALL WEATHER ROADS DRY WEATHER ROADS  
Heavy-duty ———— LANE & LANE Improved dirt  
Medium-duty ———— LANE & LANE Unimproved dirt  
Loose-surface, graded, or narrow hard-surface - - - - -  
U. S. Route State Route

COLLINSVILLE, CONN.  
SW/4 GRANBY 15' QUADRANGLE  
N4145-W7252.5/7.5

EDITION OF 1951

THIS MAP COMPLIES WITH NATIONAL MAP ACCURACY STANDARDS  
FOR SALE BY U. S. GEOLOGICAL SURVEY, WASHINGTON 25, D. C.  
A FOLDER DESCRIBING TOPOGRAPHIC MAPS AND SYMBOLS IS AVAILABLE ON REQUEST

SEP 23 1957

1595