

U. S. G. S.  
FILE COPY  
Inspection and Editing.

WAR DEPARTMENT  
CORPS OF ENGINEERS, U. S. ARMY

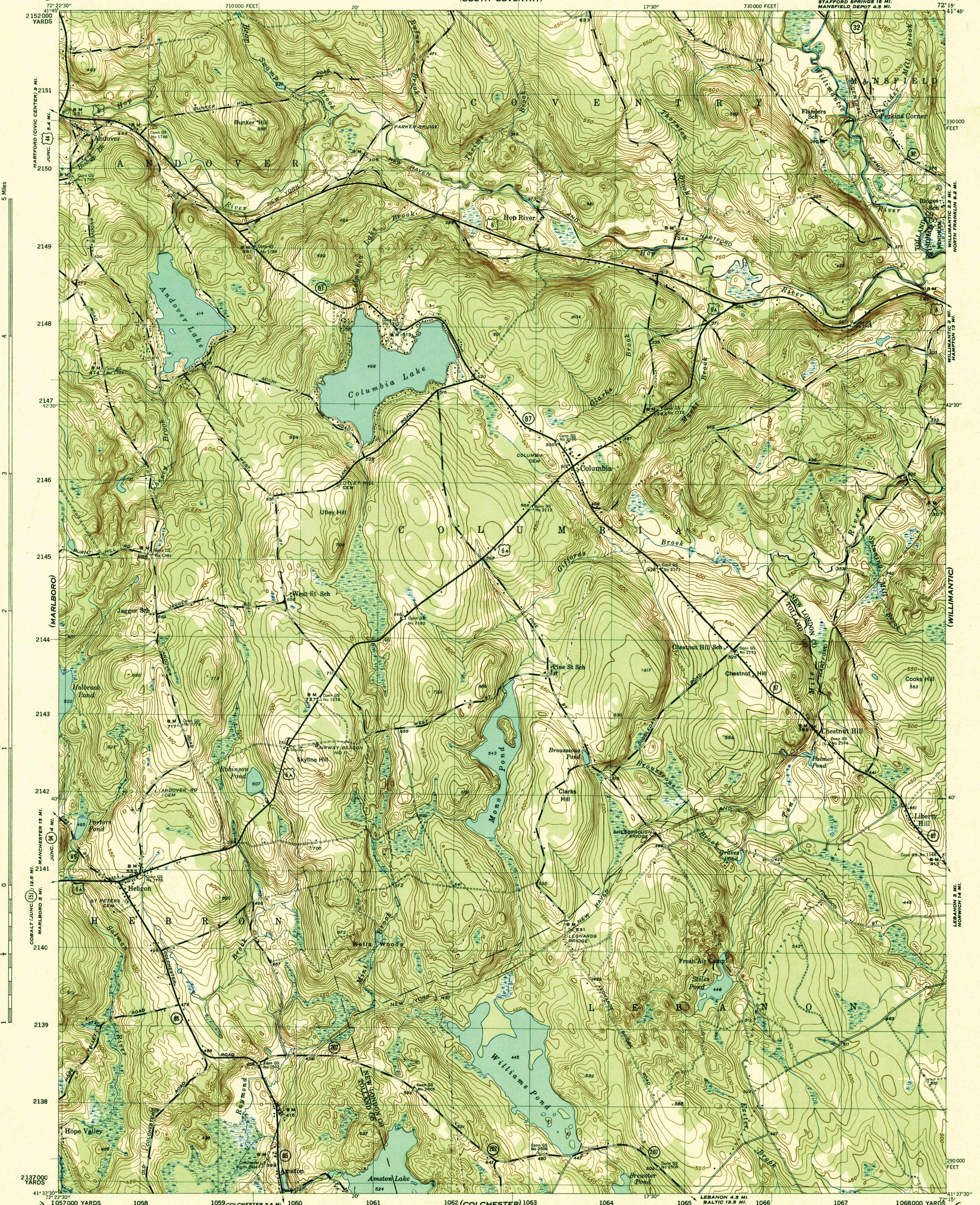
COLUMBIA QUADRANGLE  
7 1/2-MINUTE SERIES

CONNECTICUT  
Scale 1:31,680

(SOUTH COVENTRY)

(SPRING HILL)

(ROCKVILLE)

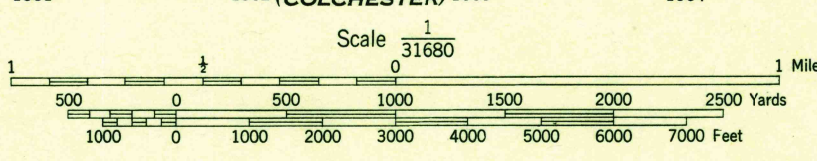


5 Miles  
4  
3  
2  
1  
0  
1  
1  
1

2152000 YARDS  
2151  
2150  
2149  
2148  
2147  
2146  
2145  
2144  
2143  
2142  
2141  
2140  
2139  
2138  
2137000 YARDS

330000 FEET  
330000  
320000  
290000 FEET

Mapped by U. S. Geological Survey under direction of the Chief of Engineers, U. S. Army, 1942-43  
Topography by U. S. Geological Survey  
Control by U. S. C. & G. S. and Conn. Geodetic Survey  
Polyconic projection, 1927 North American datum  
This map complies with national standard map accuracy requirements



Scale 1:31680  
1 Mile  
2500 Yards  
7000 Feet

CONTOUR INTERVAL 10 FEET  
DATUM IS MEAN SEA LEVEL

USGS  
Historical File  
Topographic Division

RESTRICTED

COLUMBIA, CONN.  
N4137.5-W7215/7.5  
EDITION OF 1944

AUG 18 1944

U. S. G. S.  
FILE COPY  
Inspection and Editing.

3185  
3105