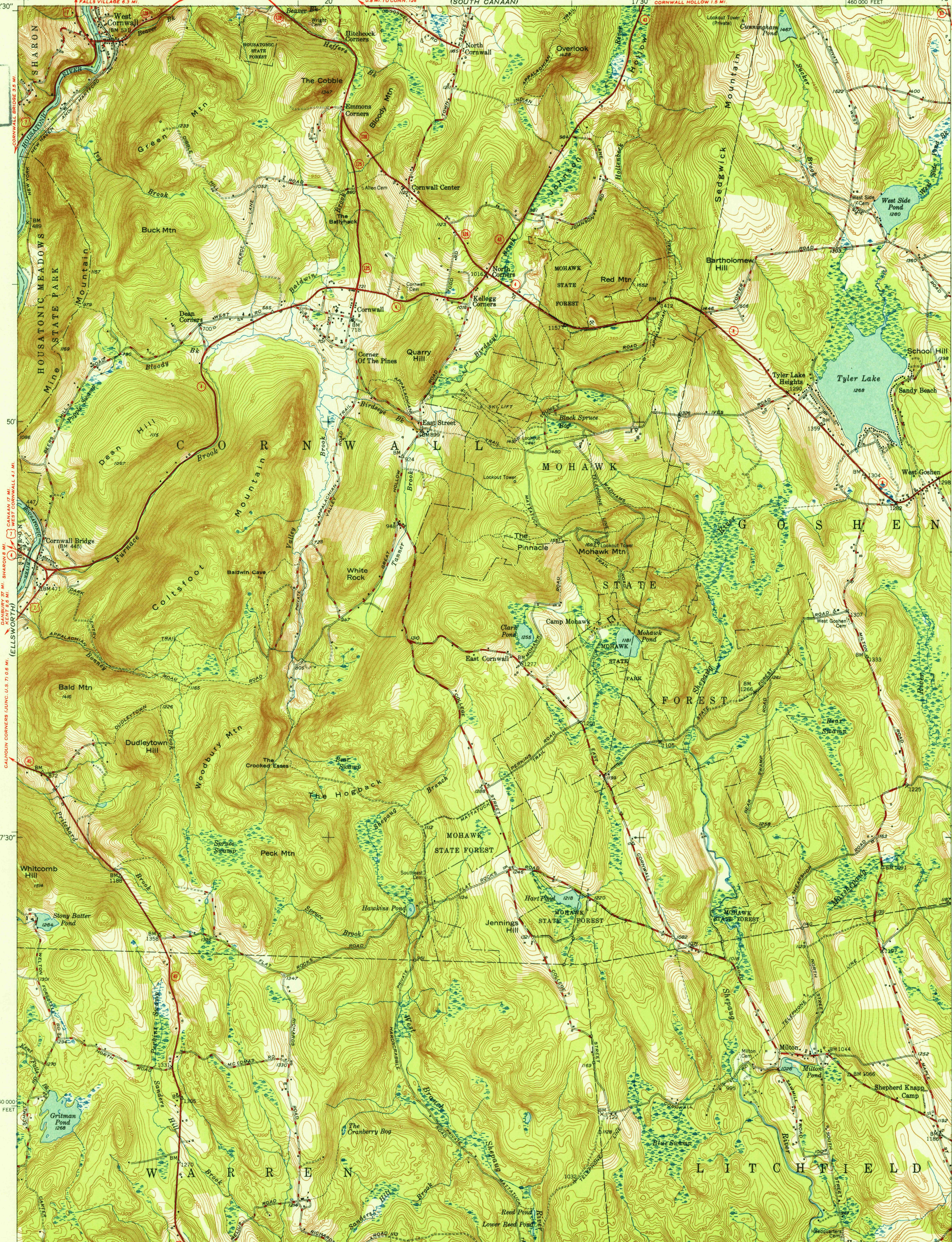


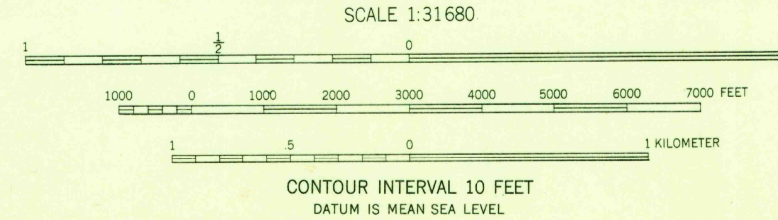
(SHARON)
73°22'30"
41°52'30"

(NORFOLK)
73°15'
41°52'30"

U. S. G. S.
FILE COPY
Inspection and Editing.



Mapped, edited, and published by the Geological Survey
Control by USGS, USC&GS, and Connecticut Geodetic Survey
Topography from aerial photographs by multiplex methods
Aerial photographs taken 1944. Field check 1948
Polyconic projection. 1927 North American datum
10,000-foot grid based on Connecticut coordinate system



ROAD CLASSIFICATION
 HARD-SURFACE ALL WEATHER ROADS DRY WEATHER ROADS
 Heavy-duty ———— 2 LANE 3 LANE Improved dirt ————
 Medium-duty ———— 2 LANE 3 LANE Unimproved dirt ————
 Loose-surface, graded, or narrow hard-surface ————
 U. S. Route State Route

Historical USGS
Topographic Division
U. S. G. S.
FILE COPY
Inspection and Editing.

CORNWALL, CONN.
SE/4 CORNWALL 15' QUADRANGLE
N4145-W7315/7.5
EDITION OF 1950

THIS MAP COMPLIES WITH NATIONAL MAP ACCURACY STANDARDS
FOR SALE BY U. S. GEOLOGICAL SURVEY, WASHINGTON 25, D. C.
A FOLDER DESCRIBING TOPOGRAPHIC MAPS AND SYMBOLS IS AVAILABLE ON REQUEST