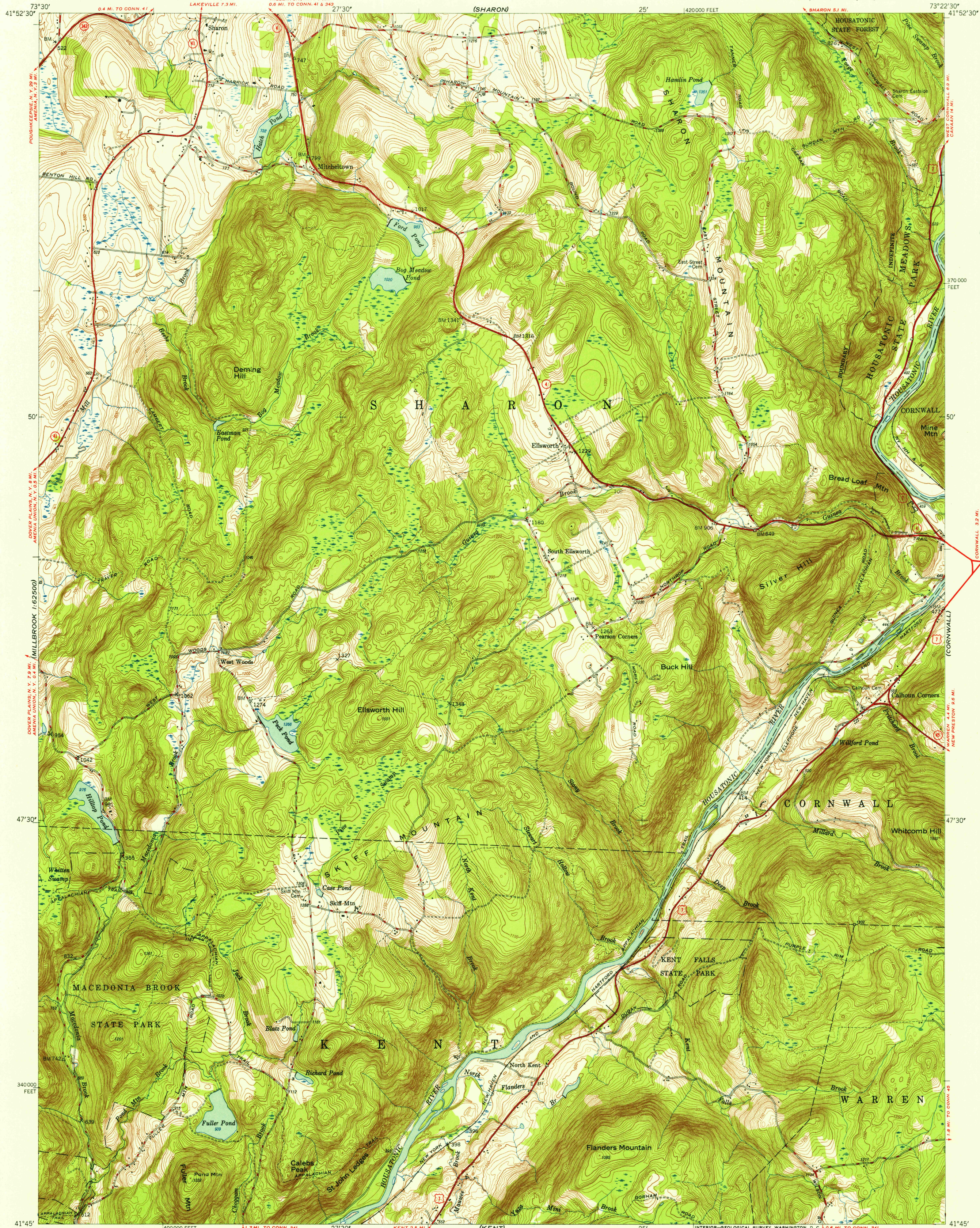


(MILLBROOK)
1:62500

UNITED STATES
DEPARTMENT OF THE INTERIOR
GEOLOGICAL SURVEY

ELLSWORTH QUADRANGLE
CONNECTICUT-LITCHFIELD CO.
7.5 MINUTE SERIES (TOPOGRAPHIC)
SW 1/4 CORNWALL, 15' QUADRANGLE

(SOUTH CANAAN)

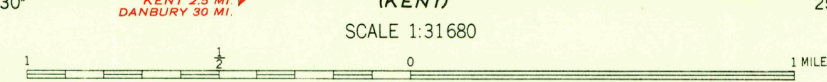
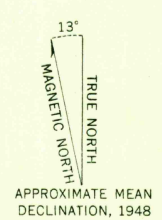


U.S.G.S.
FILE COPY
TOPOGRAPHIC DIVISION

U.S.G.S.
FILE COPY
TOPOGRAPHIC DIVISION

(DOVER PLAINS)

Mapped, edited, and published by the Geological Survey
Control by USGS, USC&GS, and Connecticut Geodetic Survey
Topography from aerial photographs by multiplex methods
Aerial photographs taken 1944. Field check 1948
Polyconic projection. 1927 North American datum
10,000-foot grid based on Connecticut coordinate system



CONTOUR INTERVAL 10 FEET
DATUM IS MEAN SEA LEVEL

ROAD CLASSIFICATION

HARD SURFACE ALL WEATHER ROADS	DRY WEATHER ROADS
Heavy-duty LANE IS LANE	Improved dirt
Medium-duty LANE IS LANE	Unimproved dirt
Loose-surface, graded, or narrow hard-surface	State Route
U. S. Route	

USGS
Historical File
Topographic Division

ELLSWORTH, CONN.
SW 1/4 CORNWALL 15' QUADRANGLE
N4145-W7322.5/7.5

EDITION OF 1950

JUN 26 1956

2645

THIS MAP COMPLIES WITH NATIONAL MAP ACCURACY STANDARDS
FOR SALE BY U. S. GEOLOGICAL SURVEY, WASHINGTON 25, D. C.
A FOLDER DESCRIBING TOPOGRAPHIC MAPS AND SYMBOLS IS AVAILABLE ON REQUEST