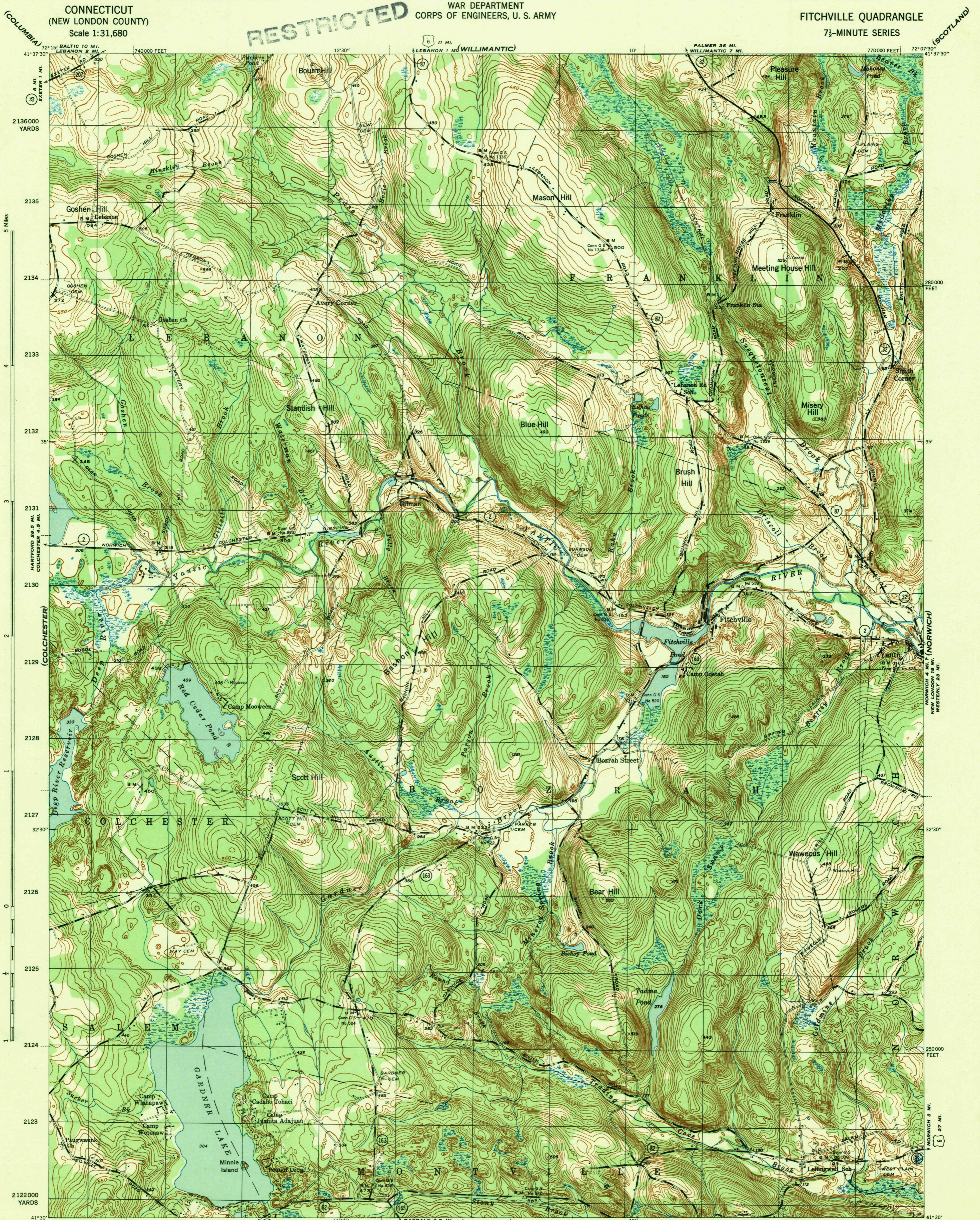


RESTRICTED



1069000 YARDS 1070 1071 HADLYNE 11.5 MI. 1072 1073 GARDALE 3.5 MI. (MONTVILLE) 1074 1075 1076 1077 1078 1079000 YARDS

Mapped by U. S. Geological Survey under direction of the Chief of Engineers, U. S. Army, 1942
Topography by U. S. Geological Survey
Control by U. S. C. & G. S. and Conn. Geodetic Survey
Polyconic projection, 1927 North American datum
This map complies with national standard map accuracy requirements

Scale 1/31680
1 Mile
0 500 1000 1500 2000 2500 Yards
0 1000 2000 3000 4000 5000 6000 7000 Feet

ROAD CLASSIFICATION
Dependable hard-surface heavy-duty road
Loose-surface graded dry weather road
Secondary, hard-surface all-weather road
Dirt road
U. S. Route 21
State Route 16
More than two lanes indicated by note along road with tick at point of change 3 LANE 4 LANE

CONTOUR INTERVAL 10 FEET
DATUM IS MEAN SEA LEVEL
ONE THOUSAND YARD GRID COMPUTED FROM "GRID SYSTEM FOR PROGRESSIVE MAPS IN THE U. S." ZONE A. U. S. C. & G. S. SPECIAL PUBLICATION NO. 59
THE LAST THREE DIGITS OF THE GRID NUMBERS ARE OMITTED
TEN THOUSAND FOOT GRID BASED ON CONNECTICUT PLANE COORDINATE SYSTEM
NOTE: OFFICERS USING THIS MAP WILL MARK HEREON CORRECTIONS AND ADDITIONS WHICH COME TO THEIR ATTENTION AND MAIL DIRECT TO THE CHIEF OF ENGINEERS, WASHINGTON, D. C.

U. S. G. S. FILE COPY
APPROXIMATE MEAN DECLINATION 1942 ANNUAL MAGNETIC CHANGE 1" INCREASE

USCS Historical File Topographic Division
FITCHVILLE, CONN.
N4130-W7207.5/7.5
EDITION OF 1943

JAN 27 1944