

UNITED STATES  
DEPARTMENT OF THE INTERIOR  
GEOLOGICAL SURVEY

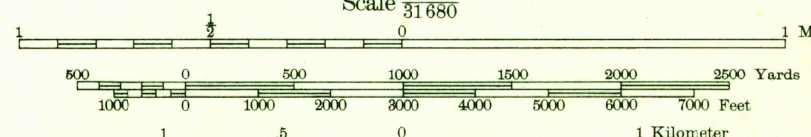
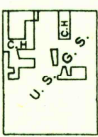
WAR DEPARTMENT  
CORPS OF ENGINEERS, U. S. ARMY

CONNECTICUT  
HARTFORD SOUTH QUADRANGLE  
7½-MINUTE SERIES

HARTFORD (CIVIC CENTER) 3.9 MI.  
TARIFFVILLE 11.6 MI.  
HARTFORD (CIVIC CENTER) 1.4 MI.  
SPRINGFIELD (CIVIC CENTER) 26 MI.  
SOUTH MANCHESTER 7.3 MI.  
EAST HARTFORD 1.8 MI.



Topography by A. G. England, E. D. Chamberlain,  
H. A. Whiskin, and City of Hartford  
Surveyed in 1942-43  
EAST BERLIN 1.6 MI.  
MIDDLETOWN 7.5 MI.  
Gray tint indicates area in which  
only landmark buildings are shown.  
MERIDEN 6.6 MI.  
NEW HAVEN (CIVIC CENTER) 26 MI.



ROAD CLASSIFICATION  
1943  
Loose surface, graded  
Unsurfaced, graded  
Secondary hard surface  
all weather road  
Dirt road  
More than two lanes indicated along road with tick at point of change

HARTFORD SOUTH, CONN.  
Edition of 1944  
N 4137.5-W 7237.5/7.5

**SUPERSEDED**

FILE COPY  
Not to be Removed From Files

**HISTORICAL FILES**  
DO NOT REMOVE