

# CONNECTICUT

Scale 1:31,680

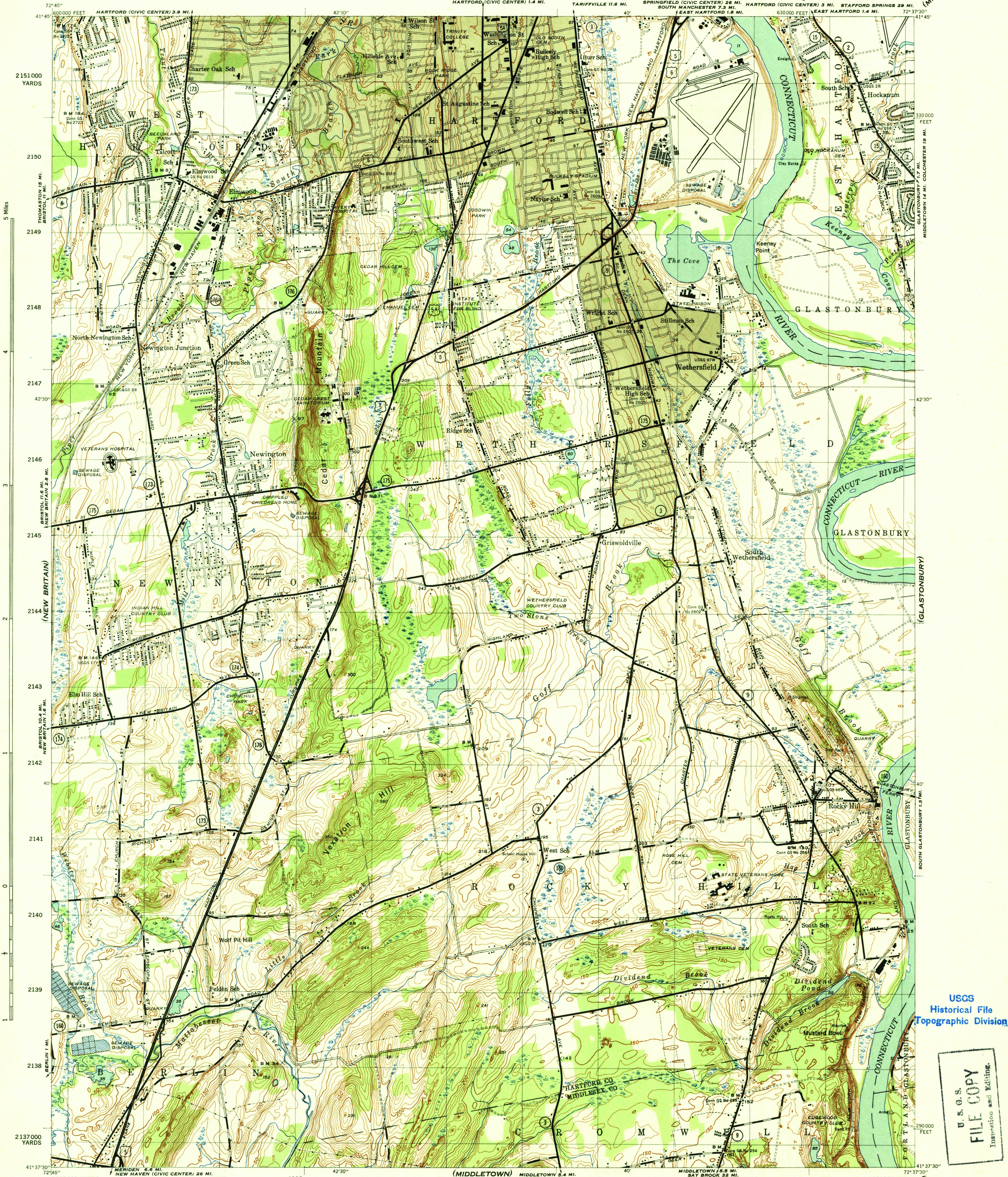
WAR DEPARTMENT  
CORPS OF ENGINEERS, U. S. ARMY

FILE COPY  
Inspection and Editing.

HARTFORD SOUTH QUADRANGLE

7 1/2-MINUTE SERIES

(MANCHESTER)



Maped by U. S. Geological Survey under direction of the Chief of Engineers, U. S. Army, 1943  
Topography by U. S. Geological Survey  
Control by U. S. C. & G. S., U. S. G. S., and Conn. G. S.  
Polyconic projection, 1927 North American datum  
This map complies with national standard map accuracy requirements

**ROAD CLASSIFICATION**

Dependable hard-surface heavy-duty road	Loose-surface graded dry weather road	U. S. Route (80)
Secondary, hard-surface all-weather road	Dirt road	State Route (700)

More than two lanes indicated by note along road with tick at point of change  
Gray tint indicates area in which only landmark buildings are shown.

Scale 1/31680

0 500 1000 1500 2000 2500 Yards

0 1000 2000 3000 4000 5000 6000 7000 Feet

CONTOUR INTERVAL 10 FEET  
DATUM IS MEAN SEA LEVEL

ONE THOUSAND YARD GRID COMPUTED FROM "GRID SYSTEM FOR PROGRESSIVE MAPS IN THE U. S. - ZONE A, U. S. C. & G. S. SPECIAL PUBLICATION NO. 89"

THE LAST THREE DIGITS OF THE GRID NUMBERS ARE OMITTED

TEN THOUSAND FOOT GRID BASED ON CONNECTICUT PLANE COORDINATE SYSTEM

NOTE: OFFICERS USING THIS MAP WILL MARK HEREON CORRECTIONS AND ADDITIONS WHICH COME TO THEIR ATTENTION AND MAIL DIRECT TO "THE CHIEF OF ENGINEERS, WASHINGTON, D. C."

APPROXIMATE MEAN DECLINATION 1943  
ANNUAL MAGNETIC CHANGE 1' INCREASE

RESTRICTED

HARTFORD SOUTH, CONN.  
N4137.5-W7237.5/7.5  
EDITION OF 1944

USCS  
Historical File  
Topographic Division

U. S. G. S.  
FILE COPY  
Inspection and Editing.

MAR 27 1944