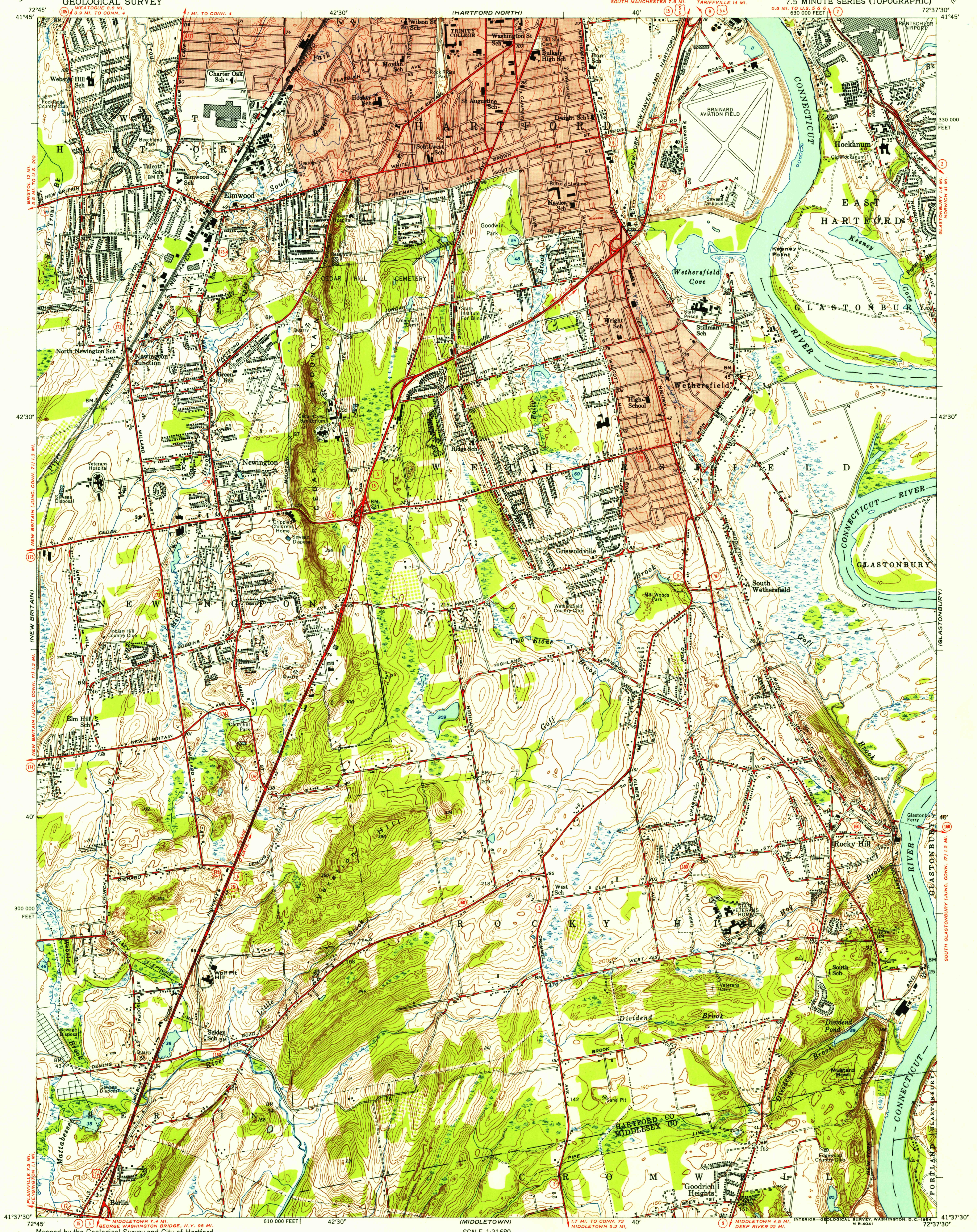


UNITED STATES
DEPARTMENT OF THE INTERIOR
GEOLOGICAL SURVEY

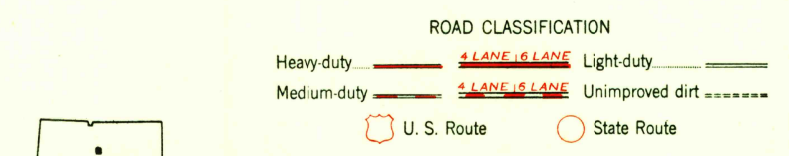
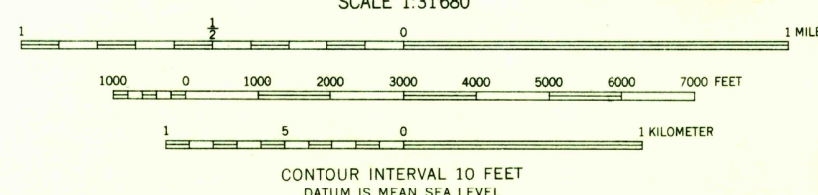
HARTFORD SOUTH QUADRANGLE
CONNECTICUT
7.5 MINUTE SERIES (TOPOGRAPHIC)



Map by the Geological Survey and City of Hartford
Edited and published by the Geological Survey

Control by USGS, USC&GS, and Connecticut Geodetic Survey
Culture and drainage in part compiled from aerial photographs
taken 1941. Topography by plane-table surveys 1942 and 1943.
Revised 1952 from 1951 and 1952 photography
Polyconic projection, 1927 North American datum
10,000-foot grid based on Connecticut coordinate system
Red tint indicates area in which only
landmark buildings are shown

APPROXIMATE MEAN
DECLINATION, 1952



HARTFORD SOUTH, CONN.
N4137.5-W7237.5/7.5
1952

THIS MAP COMPLIES WITH NATIONAL MAP ACCURACY STANDARDS
FOR SALE BY U.S. GEOLOGICAL SURVEY, WASHINGTON 25, D.C.
A FOLDER DESCRIBING TOPOGRAPHIC MAPS AND SYMBOLS IS AVAILABLE ON REQUEST