

(WILLBROOK)
1:62,500

UNITED STATES
DEPARTMENT OF THE INTERIOR
GEOLOGICAL SURVEY

STATE OF CONNECTICUT
HIGHWAY DEPARTMENT
(ELLSWORTH)

KENT QUADRANGLE
CONNECTICUT
7.5 MINUTE SERIES (TOPOGRAPHIC)

(CORNWALL)

73°30'

27°30'

25'

73°22'30"

41°45'

42°30'

40'

41°37'30"

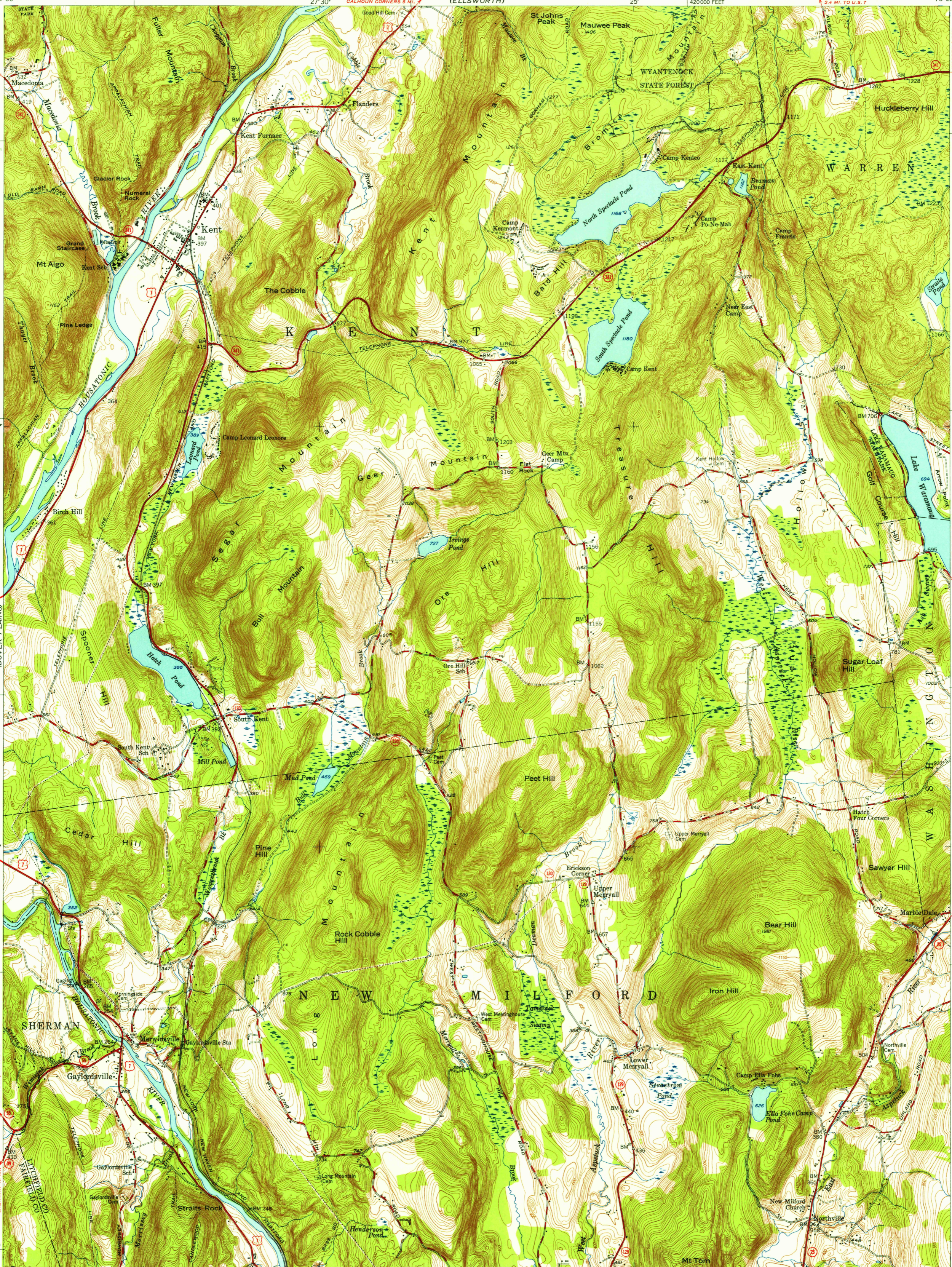
73°30'

27°30'

25'

73°22'30"

(ROXBURY)



Mapped, edited, and published by the Geological Survey

Control by USGS, USC&GS, and Connecticut Geodetic Survey

Topography from aerial photographs by multiplex methods

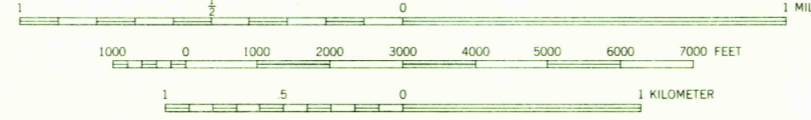
Aerial photographs taken 1944. Field check 1948

Revised 1955

Polyconic projection. 1927 North American datum

10,000-foot grid based on Connecticut coordinate system

SCALE 1:31680



CONTOUR INTERVAL 10 FEET
DATUM IS MEAN SEA LEVEL

ROAD CLASSIFICATION

- Heavy-duty ———— Light-duty ————
- Medium-duty ———— Unimproved dirt ————
- U. S. Route ———— State Route ————



KENT, CONN.
N4137.5—W7322.5/7.5

1955

THIS MAP COMPLIES WITH NATIONAL MAP ACCURACY STANDARDS
FOR SALE BY U. S. GEOLOGICAL SURVEY, WASHINGTON 25, D. C.
A FOLDER DESCRIBING TOPOGRAPHIC MAPS AND SYMBOLS IS AVAILABLE ON REQUEST

(PAWLING)

124°
TRUE NORTH
MAGNETIC NORTH
APPROXIMATE MEAN
DECLINATION, 1955