

NORWICH 21 MI.
HAMBURG 1 MI.

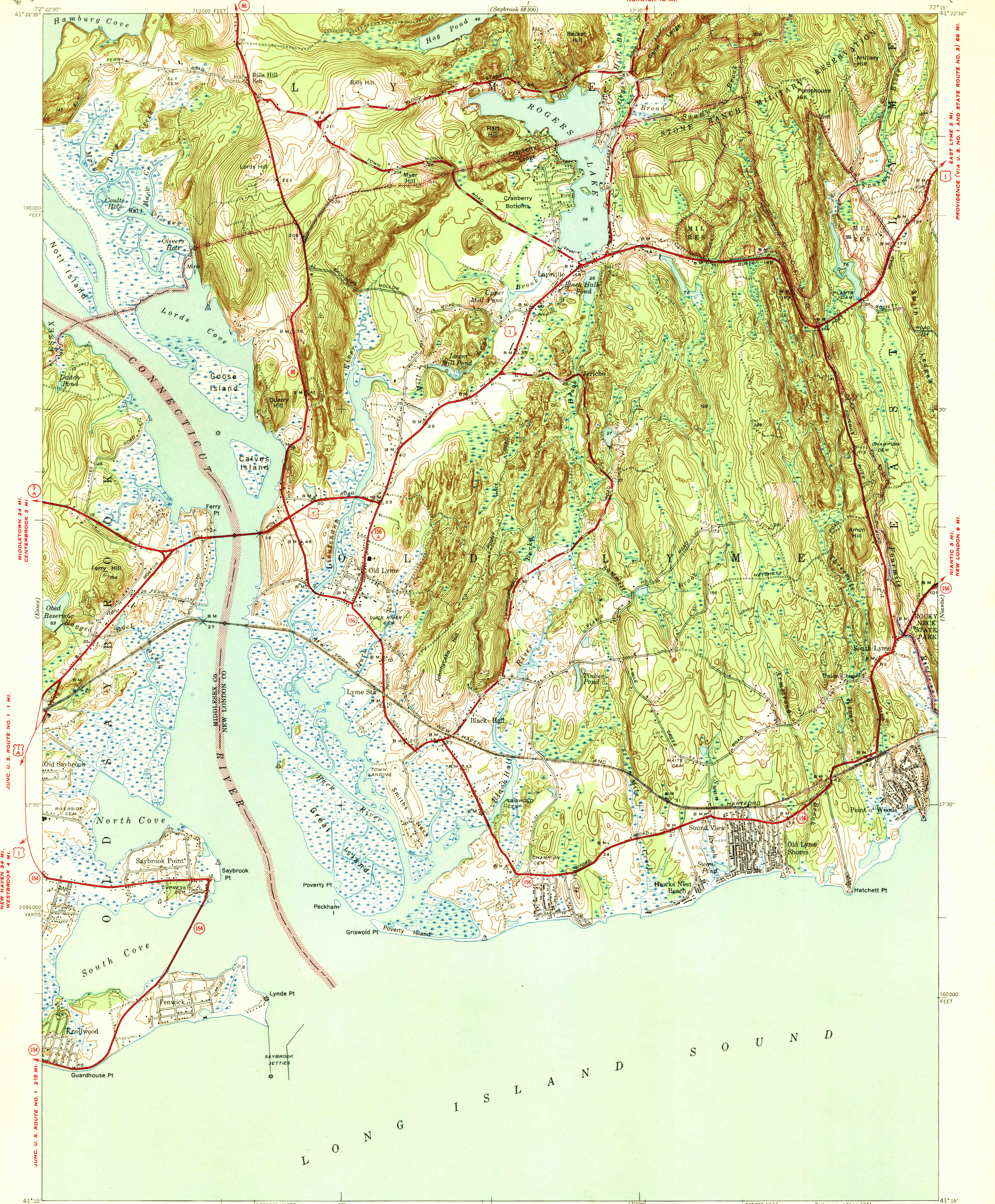
NORWICH 18 MI.

EAST LYME 2 MI.
PROVIDENCE (VIA U. S. NO. 1 AND STATE ROUTE NO. 3) 69 MI.

NIANTIC 3 MI.
NEW LONDON 9 MI.

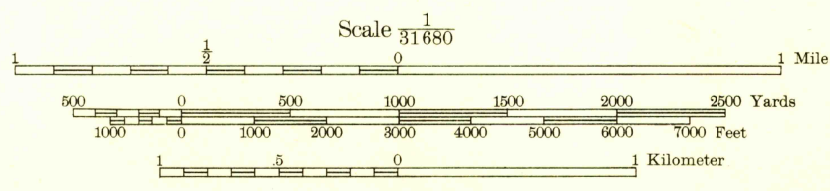
JUNG. U. S. ROUTE NO. 1 1 MI.
MIDDLESEX CO. NEW LONDON CO.

NEW HAVEN 34 MI.
WESTBROOK 4 MI.
JUNG. U. S. ROUTE NO. 1 2 1/2 MI.



Topography by A. J. Ogle,
E. V. Holloway, and J. A. Mattingly
Surveyed in 1938-39

TRUE NORTH
MAGNETIC NORTH
APPROXIMATE MEAN
DECLINATION, 1939



Contour interval 10 feet
Datum is mean sea level

Polyconic projection. 1927 North American datum
5000 yard grid based on U. S. zone system, A
10000 foot grid based on Connecticut
rectangular coordinate system

ROUTES USUALLY TRAVELED
HARD IMPERVIOUS SURFACES
OTHER SURFACE IMPROVEMENTS
1941

2 U. S. ROUTE
RETURN TO:
NMD HISTORICAL MAP ARCHIVES
USGS NATIONAL CENTER, MS-522
RESTON, VA 22092

LYME, CONN.
N4115-W7215/7.5

Preliminary edition 1941