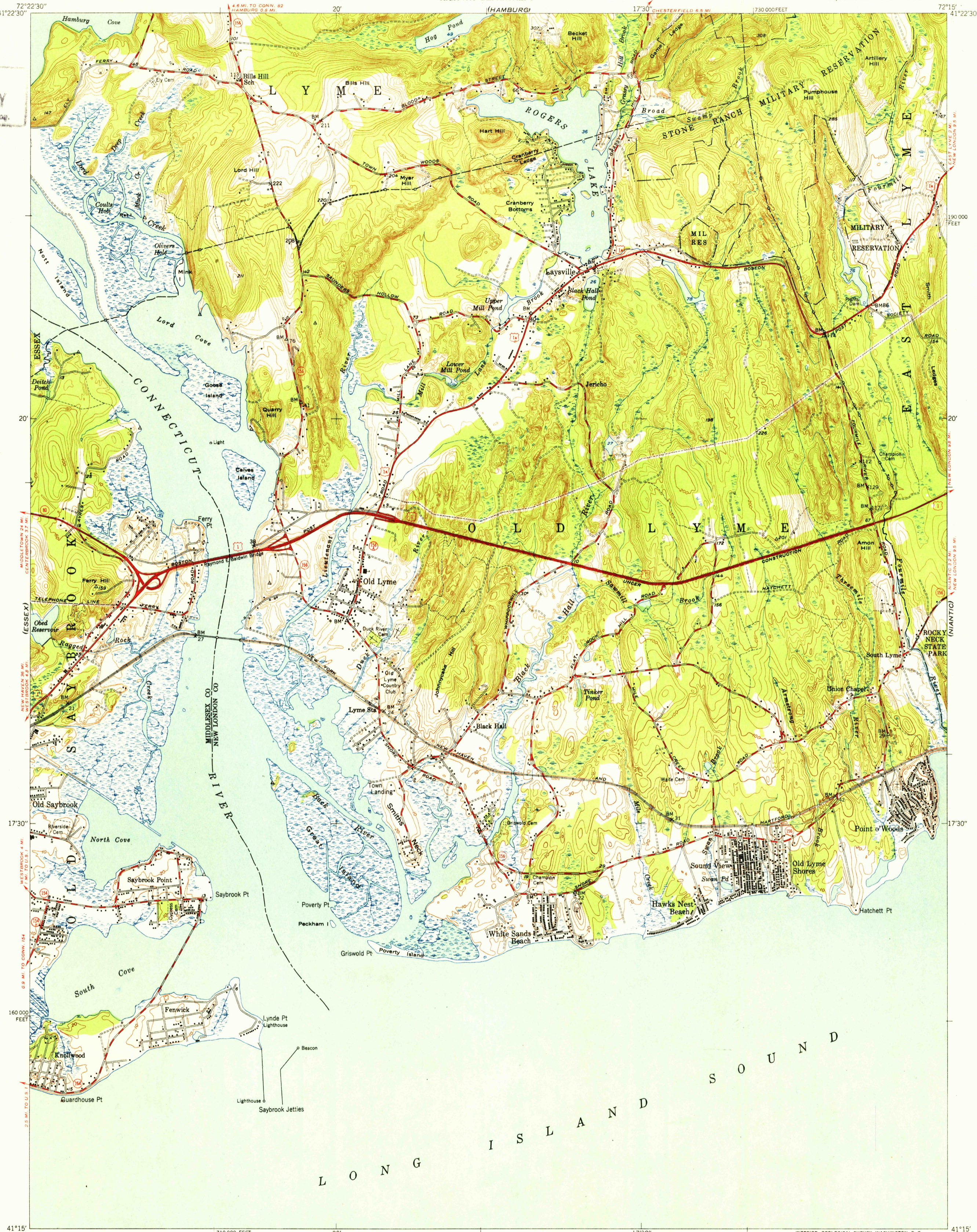


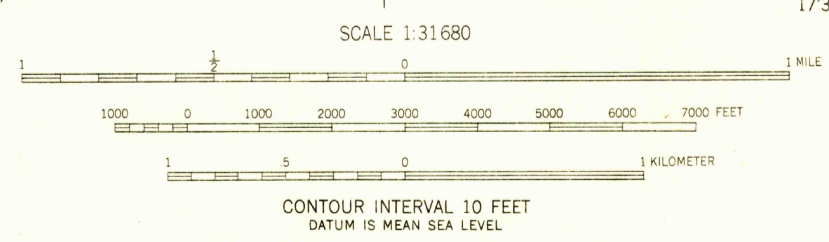
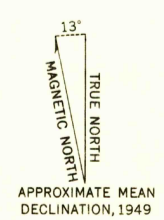
(DEEP RIVER)

(MONTVILLE)

U.S.G.S.
FILE COPY
Inspection and Rating.



Mapped, edited, and published by the Geological Survey
Control by USGS, USCGS, USCE, and Conn. Geod. Survey
Topography by plane-table methods 1938-1939
Revised in 1949
Polyconic projection. 1927 North American datum
10,000-foot grid based on Connecticut coordinate system



ROAD CLASSIFICATION

Heavy-duty	4 LANE 6 LANE	Light-duty
Medium-duty	4 LANE 6 LANE	Unimproved dirt
U. S. Route		State Route

FOR SALE BY U. S. GEOLOGICAL SURVEY, WASHINGTON 25, D. C.
A FOLDER DESCRIBING TOPOGRAPHIC MAPS AND SYMBOLS IS AVAILABLE ON REQUEST

USGS
Historical File
Topographic Division
FILE COPY
Inspection and Rating.

LYME, CONN.
SE/4 SAYBROOK 15 QUADRANGLE
N4115-W7215/7.5
EDITION OF 1951
Name changed to OLD LYME
8/14/59
3120
NOV 5 1951