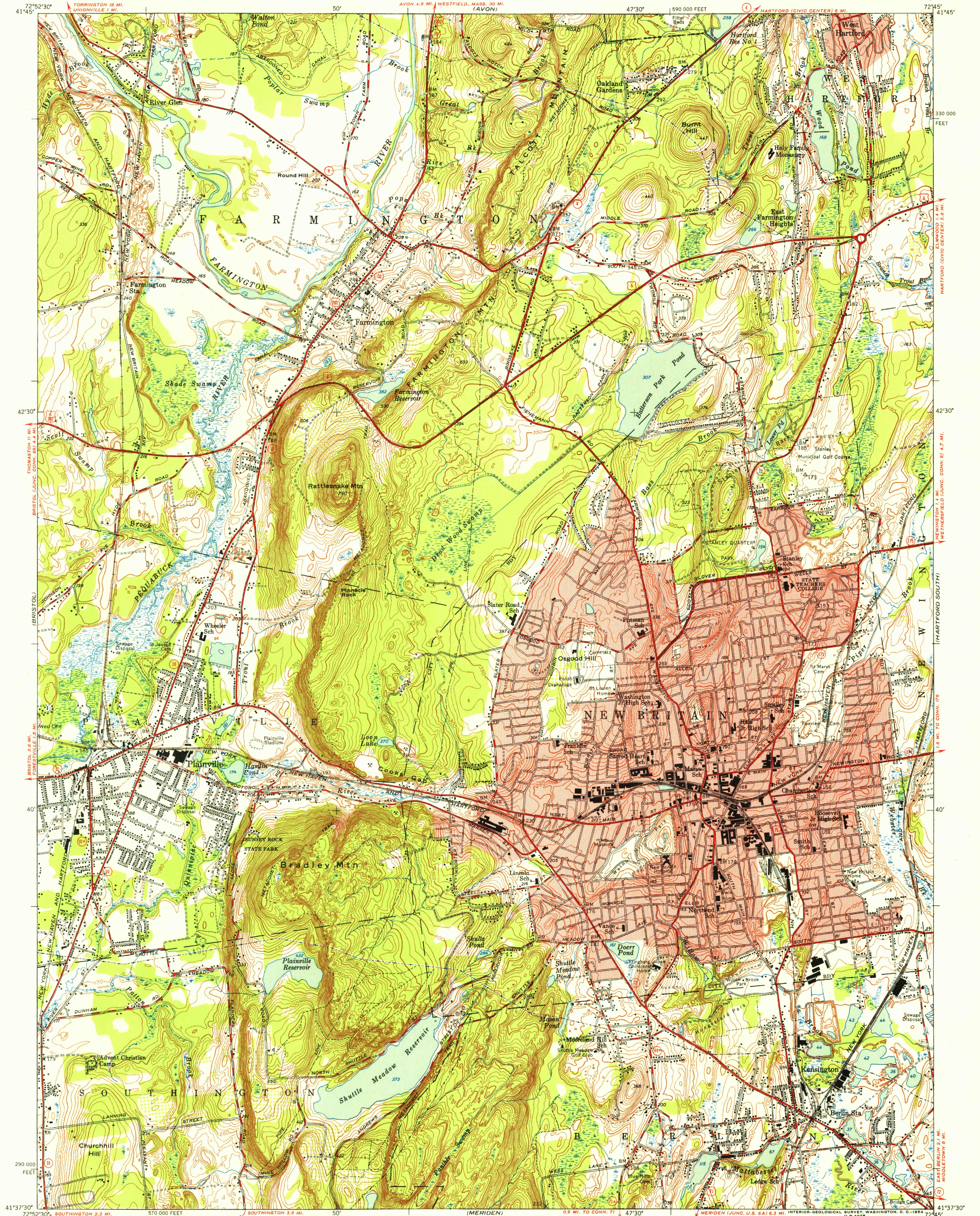


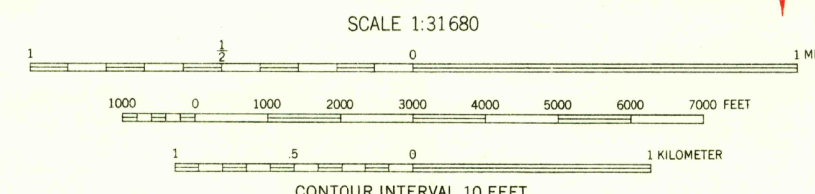
UNITED STATES
DEPARTMENT OF THE INTERIOR
GEOLOGICAL SURVEY

NEW BRITAIN QUADRANGLE
CONNECTICUT—HARTFORD CO.
7.5 MINUTE SERIES (TOPOGRAPHIC)



Maped by the Geological Survey and City of Hartford
Edited and published by the Geological Survey
Control by USGS, USC&GS, and Connecticut Geodetic Survey
Culture and drainage in part compiled from aerial photographs
taken 1941. Topography by plane-table surveys 1943. Revised
1953 from 1951 photography
Polyconic projection. 1927 North American datum
10,000-foot grid based on Connecticut coordinate system
Red tint indicates areas in which only
landmark buildings are shown

APPROXIMATE MEAN
DECLINATION, 1953



ROAD CLASSIFICATION

Heavy-duty	4 LANE 16 LANE	Light-duty
Medium-duty	4 LANE 6 LANE	Unimproved dirt

U. S. Route State Route

CONNECTICUT

QUADRANGLE LOCATION

NEW BRITAIN, CONN.
N4137.5-W7245/7.5

1953