

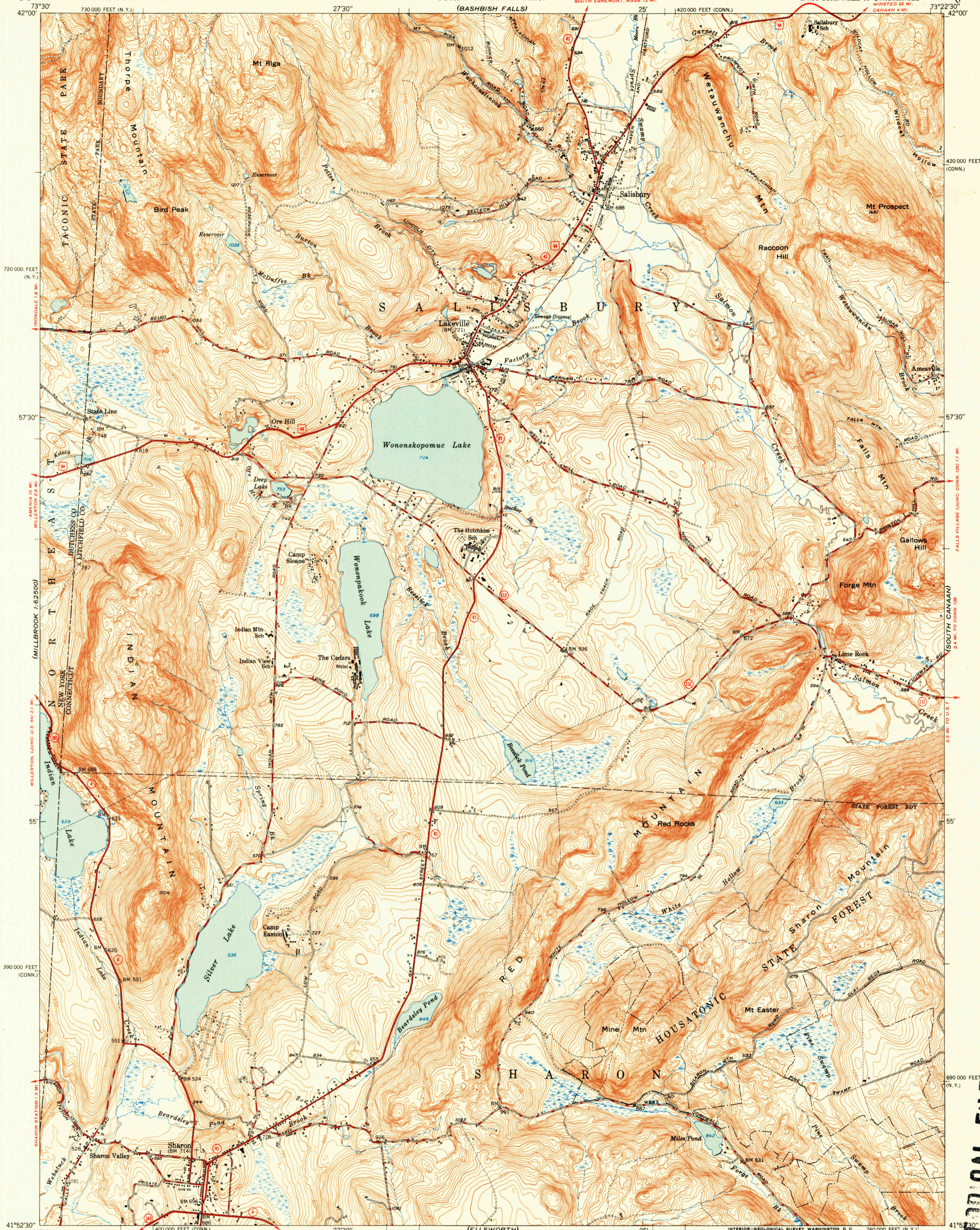
(COPAKE)  
1:62,500

UNITED STATES  
DEPARTMENT OF THE INTERIOR  
GEOLOGICAL SURVEY

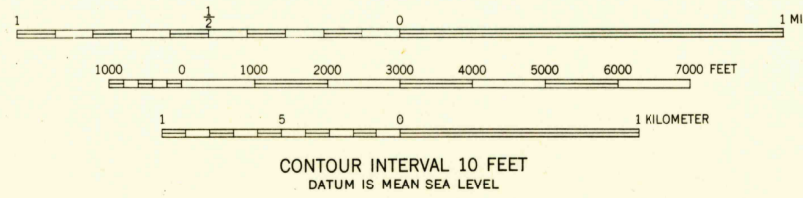
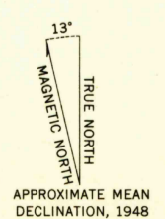
UNITED STATES  
DEPARTMENT OF THE ARMY  
CORPS OF ENGINEERS  
(BASHISH FALLS)

SHARON QUADRANGLE  
CONNECTICUT-NEW YORK  
7.5 MINUTE SERIES (TOPOGRAPHIC)  
NW/4 CORNWALL 15' QUADRANGLE  
WINDSTED 22 MI.  
DANAAN 4 MI.

(ASHLEY FALLS)



Mapped, edited, and published by the Geological Survey  
Control by USGS and USC&GS  
Topography from aerial photographs by multiplex methods  
Aerial photographs taken 1941 and 1944. Field check 1948  
Polycyclic projection. 1927 North American datum  
10,000-foot grids based on Connecticut coordinate system,  
and New York coordinate system, east zone



ROAD CLASSIFICATION  
HARD-SURFACE ALL WEATHER ROADS DRY WEATHER ROADS  
Heavy-duty 4-LANE LANE Improved dirt  
Medium-duty 4-LANE LANE Unimproved dirt  
Loose-surface, graded, or narrow hard-surface  
U. S. Route State Route

SHARON, CONN.-N.Y.  
NW/4 CORNWALL 15' QUADRANGLE  
N4152.5-W7322.5/7.5  
EDITION OF 1950

THIS MAP COMPLIES WITH NATIONAL MAP ACCURACY STANDARDS  
FOR SALE BY U. S. GEOLOGICAL SURVEY, WASHINGTON 25, D. C.  
A FOLDER DESCRIBING TOPOGRAPHIC MAPS AND SYMBOLS IS AVAILABLE ON REQUEST

SURFACE WATER BRANCH  
SPECIAL REPORTS SECTION

HISTORICAL FILES  
(DO NOT REMOVE)