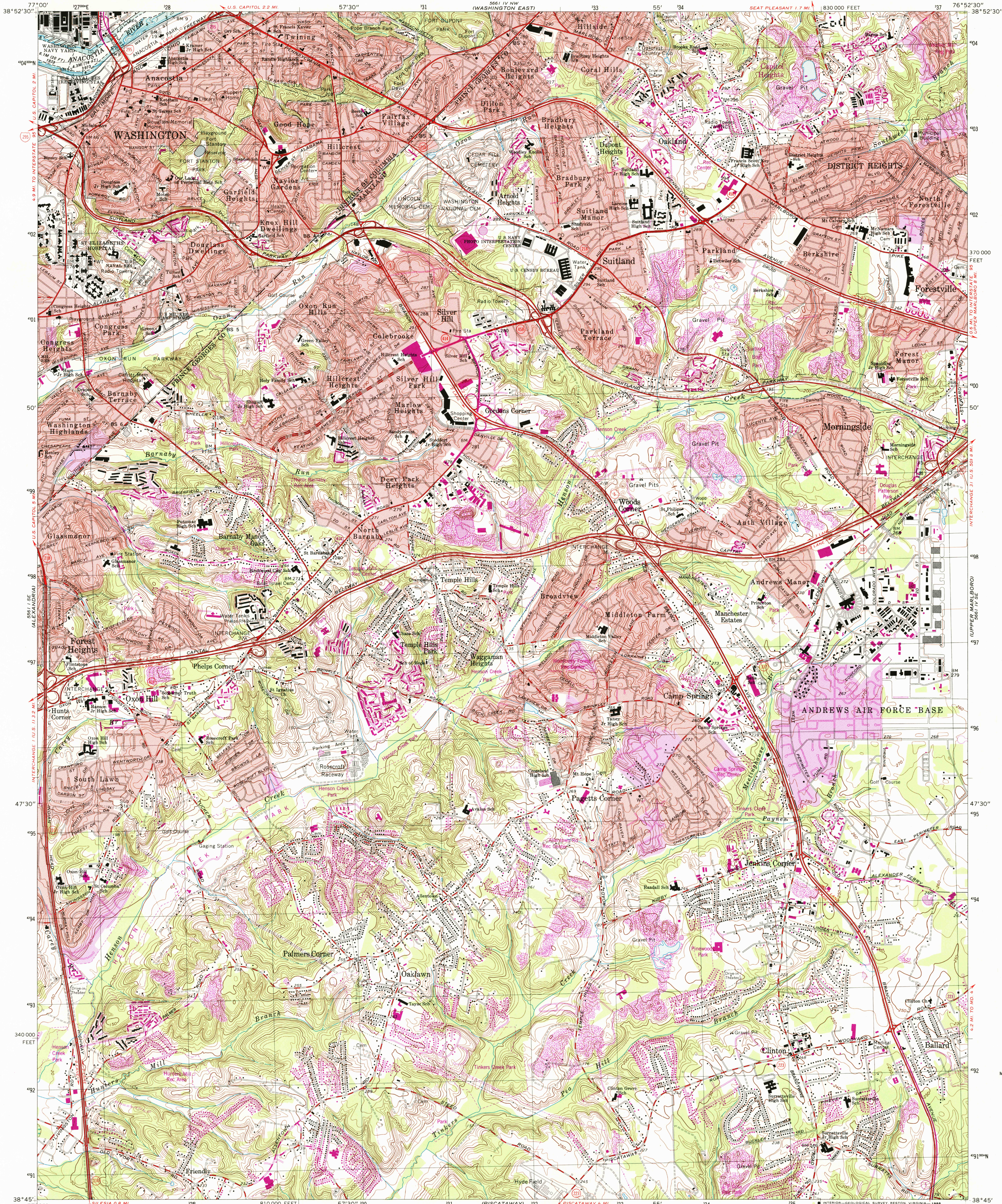
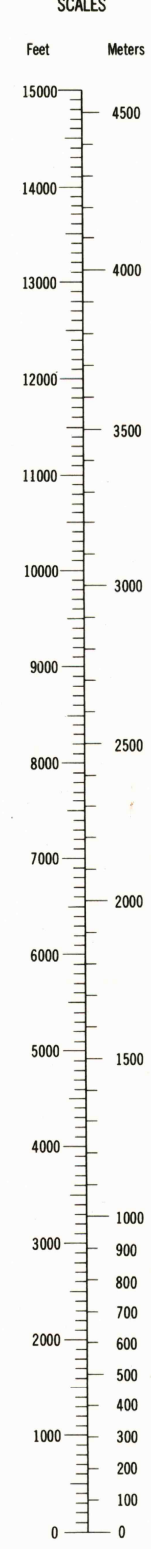


UNITED STATES
DEPARTMENT OF THE INTERIOR
GEOLOGICAL SURVEY

ANACOSTIA QUADRANGLE
DISTRICT OF COLUMBIA-MARYLAND
7.5 MINUTE SERIES (TOPOGRAPHIC-BATHYMETRIC)

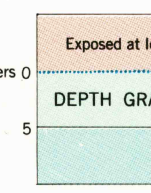


CONVERSION
SCALES



Feet	Meters
1	3.048
2	6.096
3	9.144
4	12.192
5	15.240
6	18.288
7	21.336
8	24.384
9	27.432
10	30.480

To convert feet to meters
multiply by 3.048
To convert meters to feet
multiply by 3.2808



Mapped, edited, and published by the Geological Survey
and the National Ocean Survey
Control by USGS, NOS/NOAA, USCG, NCPS, and WSSC
Topography by photogrammetric methods from aerial photographs taken
1955. Field checked 1956. Revised 1965
Bathymetry compiled by the National Ocean Survey from tide-coordinated
hydrographic surveys. This information is not intended for navigational
purposes
Mean low water (dotted line) and mean high water (heavy solid) line
compiled by NOS from tide-coordinated photographs. Apparent shoreline
(outer edge of vegetation) shown by light solid line
Polycyclic projection. 10,000-foot grid ticks based on Maryland coordinate
system
1000-meter Universal Transverse Mercator grid, zone 18
1927 North American Datum
To place on the predicted North American Datum 1983 move the
projection lines 9 meters south and 26 meters west as shown by
dashed corner ticks
Fine red dashed lines indicate selected fence and field lines where
generally visible on aerial photographs. This information is unchecked
Red tint indicates areas in which only landmark buildings are shown
There may be private inholdings within the boundaries of the National
or State reservations shown on this map
Revisions shown in purple compiled from aerial photographs taken
1977 and other sources. This information not field checked
Map edited 1979
Purple tint indicates extension of urban areas

Survey Number	Survey Date	Survey Scale	Survey Line Spacing (Feet, Meters)
H-9380	1973	1:10,000	01-05

NATIONAL OCEAN SURVEY
HYDROGRAPHIC SURVEY INDEX
SCALE 1:24,000
CONTOUR INTERVAL 10 FEET
NATIONAL GEODETIC VERTICAL DATUM OF 1929
BATHYMETRIC CONTOUR INTERVAL 1 METER WITH SUPPLEMENTARY
0.5 METER CONTOURS-DATUM IS MEAN LOW WATER
THE RELATIONSHIP BETWEEN THE TWO DATUMS IS VARIABLE
THE MEAN RANGE OF TIDE IS APPROXIMATELY 0.4 METER
BASE MAP COMPILES WITH NATIONAL MAP ACCURACY STANDARDS
BATHYMETRIC SURVEY DATA COMPILES WITH INTERNATIONAL HYDROGRAPHIC
ORGANIZATION (IHO) SPECIAL PUBLICATION 44 ACCURACY STANDARDS
AND/OR STANDARDS USED AT THE DATE OF THE SURVEY
FOR SALE BY U.S. GEOLOGICAL SURVEY, RESTON, VIRGINIA 22092
AND NATIONAL OCEAN SURVEY, ROCKVILLE, MARYLAND 20852
A FOLDER DESCRIBING TOPOGRAPHIC MAPS AND SYMBOLS IS AVAILABLE ON REQUEST

ROAD CLASSIFICATION
Heavy-duty ——— Light-duty ———
Medium-duty ——— Unimproved dirt ———
Interstate Route ——— State Route ———
ANACOSTIA, D.C. - MD.
38076-G8-TF-024
1965
PHOTOREVISED 1979
BATHYMETRY ADDED 1982
DMA 5661 IV SW - SERIES V833

USGS NMD HISTORICAL MAP
SEP 24 1986
REC'D FILE COPY