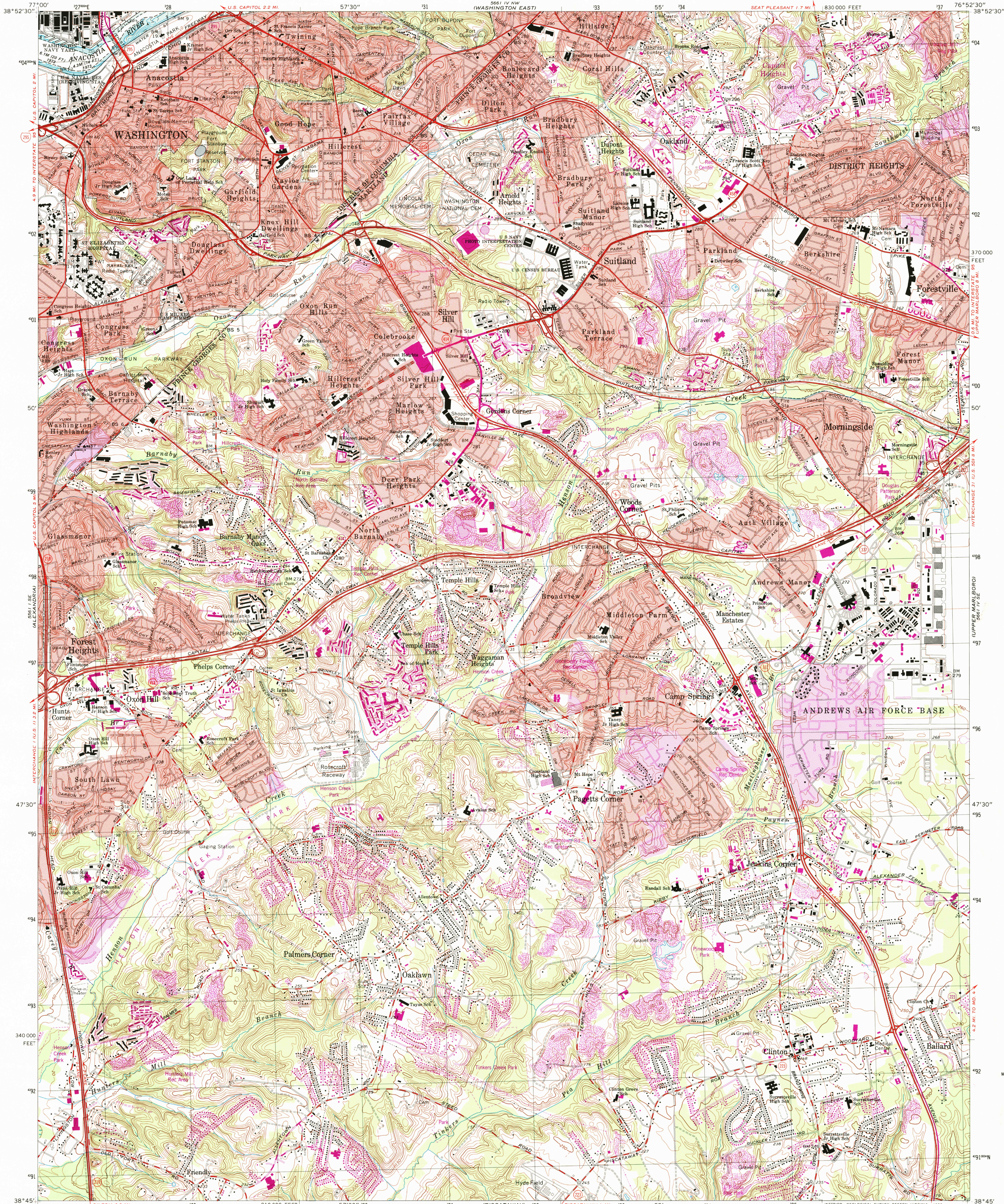


UNITED STATES
DEPARTMENT OF THE INTERIOR
GEOLOGICAL SURVEY

ANACOSTIA QUADRANGLE
DISTRICT OF COLUMBIA—MARYLAND
7.5 MINUTE SERIES (TOPOGRAPHIC—BATHYMETRIC)



CONVERSION
SCALES

Feet Meters



Feet Meters

1	3048
2	6096
3	9144
4	12192
5	15240
6	18288
7	21336
8	24384
9	27432
10	30480

To convert feet to meters
multiply by 3048

To convert meters to feet
multiply by 3.2808

Exposed at low tide

0 Feet

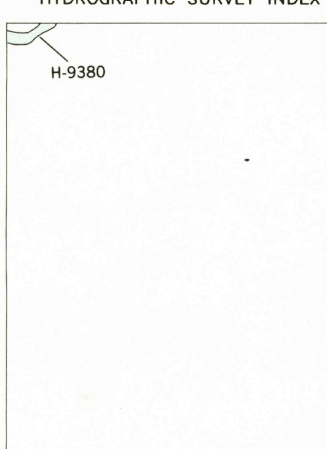
DEPTH GRADIENT

16.4

Maximum depth

Maped, edited, and published by the Geological Survey and the National Ocean Survey
Control by USGS, NOS/NOAA, USCE, NCPS, and WSSC
Topography by photogrammetric methods from aerial photographs taken 1955. Field checked 1956. Revised 1965
Bathymetry compiled by the National Ocean Survey from tide-coordinated hydrographic surveys. This information is not intended for navigational purposes
Mean low water (dotted) line and mean high water (heavy solid) line compiled by NOS from tide-coordinated photographs. Apparent shoreline (outer edge of vegetation) shown by light solid line
Polyconic projection. 10,000-foot grid ticks based on Maryland coordinate system
1000-meter Universal Transverse Mercator grid, zone 18
1927 North American Datum
To place on the predicted North American Datum 1983 move the projection lines 9 meters south and 26 meters west as shown by dashed corner ticks
Fine red dashed lines indicate selected fence and field lines where generally visible on aerial photographs. This information is unchecked
Red tint indicates areas in which only landmark buildings are shown
There may be private inholdings within the boundaries of the National or State reservations shown on this map
Revisions shown in purple compiled from aerial photographs taken 1977 and other sources. This information not field checked
Map edited 1979
Purple tint indicates extension of urban areas

NATIONAL OCEAN SURVEY
HYDROGRAPHIC SURVEY INDEX



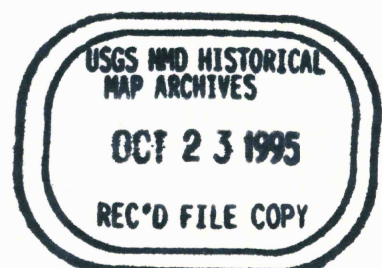
HYDROGRAPHIC SURVEY
INFORMATION

Survey Number	Survey Date	Survey Scale	Survey Line Spacing (Naut. Miles)
H-9380	1973	1:10,000	01-05

SCALE 1:24,000
CONTOUR INTERVAL 10 FEET
NATIONAL GEODETIC VERTICAL DATUM OF 1929
BATHYMETRIC CONTOUR INTERVAL 1 METER WITH SUPPLEMENTARY 0.5 METER CONTOURS—DATUM IS MEAN LOW WATER
THE RELATIONSHIP BETWEEN THE TWO DATUMS IS VARIABLE
THE MEAN RANGE OF TIDE IS APPROXIMATELY 0.4 METER
BASE MAP COMPLIES WITH NATIONAL MAP ACCURACY STANDARDS
BATHYMETRIC SURVEY DATA COMPLIES WITH INTERNATIONAL HYDROGRAPHIC ORGANIZATION (IHO) SPECIAL PUBLICATION 44 ACCURACY STANDARDS AND/OR STANDARDS USED AT THE DATE OF THE SURVEY
FOR SALE BY U. S. GEOLOGICAL SURVEY, RESTON, VIRGINIA 22092
AND NATIONAL OCEAN SURVEY, ROCKVILLE, MARYLAND 20852
A FOLDER DESCRIBING TOPOGRAPHIC MAPS AND SYMBOLS IS AVAILABLE ON REQUEST



QUADRANGLE LOCATION



ANACOSTIA, D.C. — MD.

38076-GB-TF-024

1965
PHOTOREVISED 1979
BATHYMETRY ADDED 1982
DMA 5661 IV SW—SERIES V833

