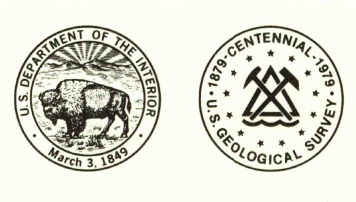
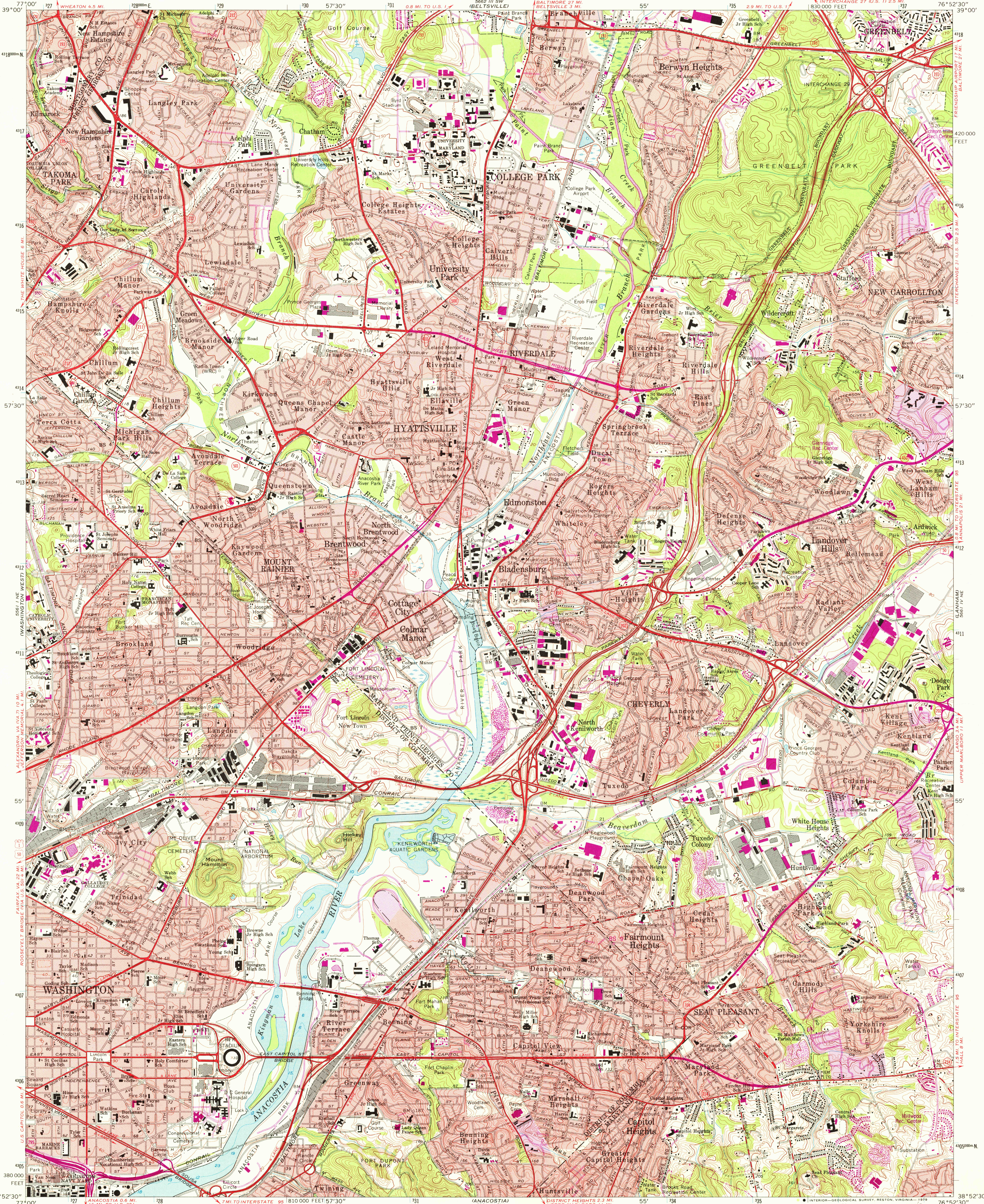


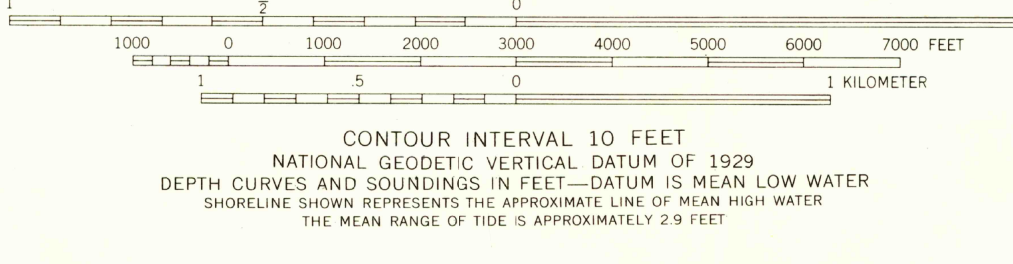
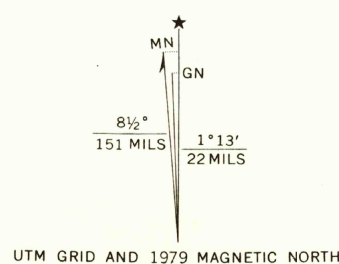
UNITED STATES
DEPARTMENT OF THE INTERIOR
GEOLOGICAL SURVEY



WASHINGTON EAST QUADRANGLE
DISTRICT OF COLUMBIA—MARYLAND
7.5 MINUTE SERIES (TOPOGRAPHIC)
INTERCHANGE 27 U.S. 11 2.5 MI.
830 000 FEET

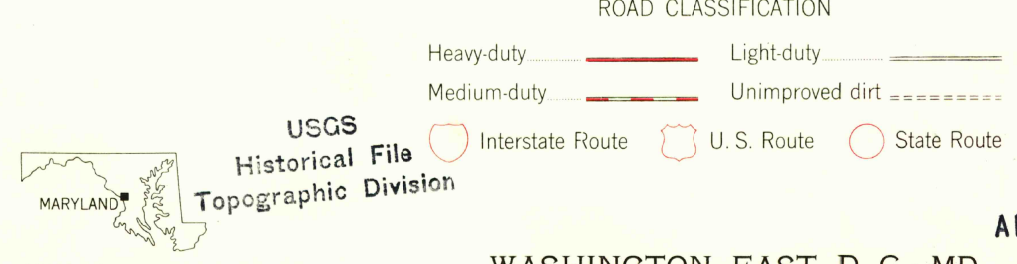


Mapped, edited, and published by the Geological Survey
Control by USGS, USC&GS, USCE, NCPS, and WSSC
Topography by photogrammetric methods from aerial photographs
taken 1955. Field checked 1957. Revised 1965
Selected hydrographic data compiled from USC&GS Chart 560 (1965)
This information is not intended for navigational purposes
Polyconic projection. 1927 North American datum
10,000-foot grid based on Maryland coordinate system
1000-meter Universal Transverse Mercator grid ticks,
zone 18, shown in blue
Red tint indicates areas in which only landmark buildings are shown
Revisions shown in purple compiled from aerial photographs
taken 1977 and other source data; this information
not field checked. Map edited 1979
Purple tint indicates extension of urban areas



CONTOUR INTERVAL 10 FEET
NATIONAL GEODETIC VERTICAL DATUM OF 1929
DEPTH CURVES AND SOUNDINGS IN FEET—DATUM IS MEAN LOW WATER
SHORELINE SHOWN REPRESENTS THE APPROXIMATE LINE OF MEAN HIGH WATER
THE MEAN RANGE OF TIDE IS APPROXIMATELY 2.9 FEET

THIS MAP COMPLIES WITH NATIONAL MAP ACCURACY STANDARDS
FOR SALE BY U.S. GEOLOGICAL SURVEY, RESTON, VIRGINIA 22092
A FOLDER DESCRIBING TOPOGRAPHIC MAPS AND SYMBOLS IS AVAILABLE ON REQUEST



There may be private inholdings within the boundaries of
the National or State reservations shown on this map
Boundary lines shown in purple compiled from latest
information available from the controlling authority

WASHINGTON EAST, D.C.—MD.
N3852.5—W7652.5/7.5
1965
PHOTOREVISED, 1979
AMS 5661 IV NW—SERIES V833

APR 26 1979

20,400