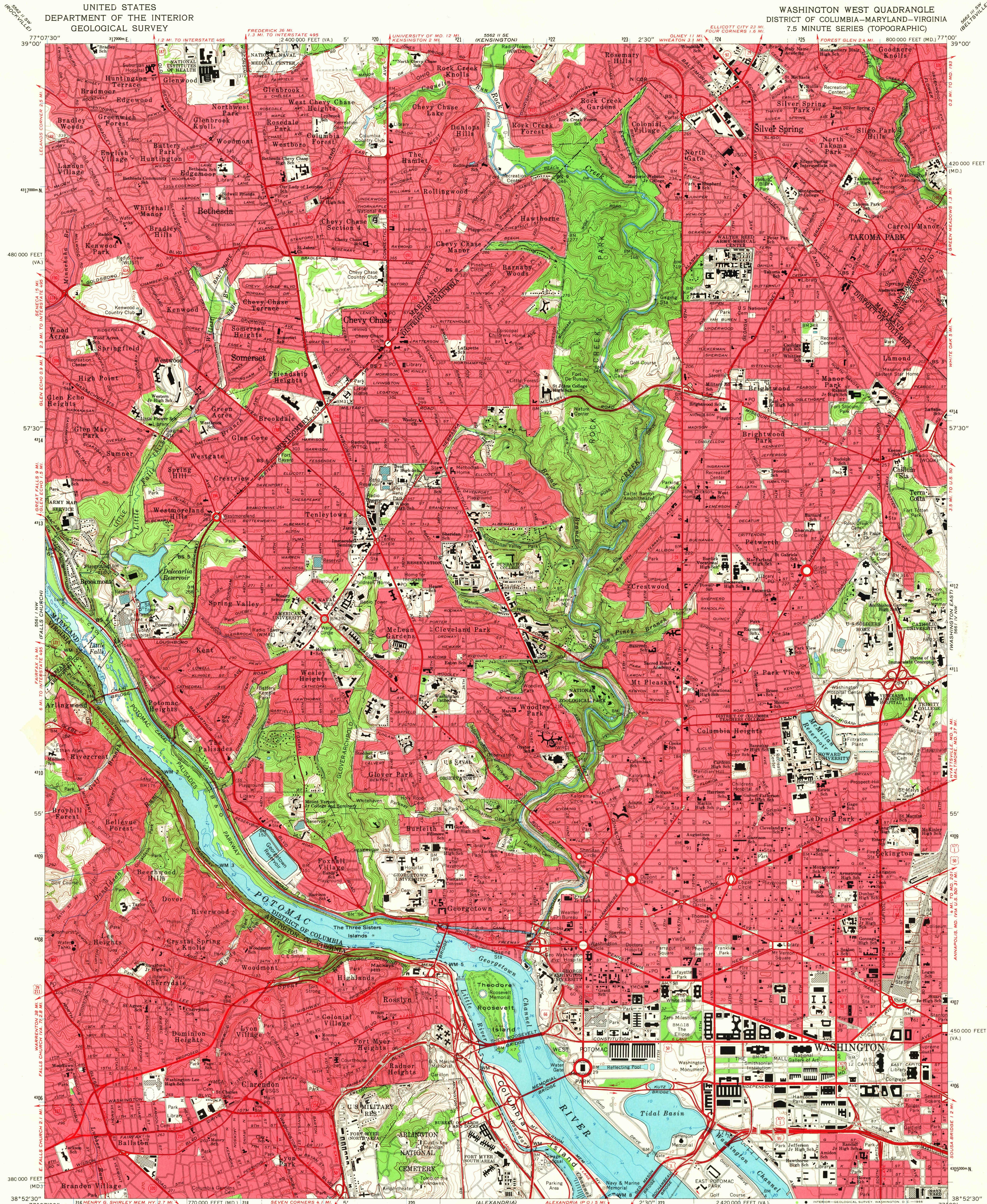
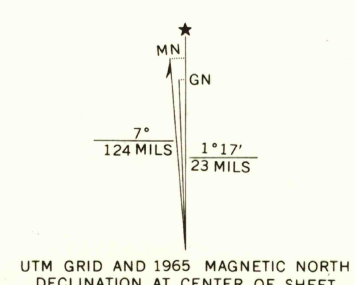


UNITED STATES
DEPARTMENT OF THE INTERIOR
GEOLOGICAL SURVEY

WASHINGTON WEST QUADRANGLE
DISTRICT OF COLUMBIA-MARYLAND-VIRGINIA
7.5 MINUTE SERIES (TOPOGRAPHIC)



Mapped, edited, and published by the Geological Survey
Control by USGS, USC&GS, NCPS, and WSSC
Topography by photogrammetric methods from aerial photographs
taken 1955. Field checked 1956. Revised 1965
Selected hydrographic data compiled from USC&GS Chart 560 (1965)
This information is not intended for navigational purposes
Polyconic projection. 1927 North American datum
10,000-foot grids based on Maryland coordinate system,
and Virginia coordinate system, north zone
1000-meter Universal Transverse Mercator grid ticks,
zone 18, shown in blue
Red tint indicates areas in which only landmark buildings are shown

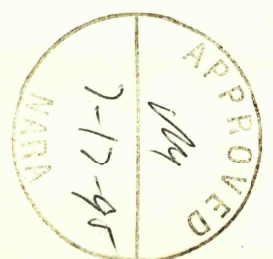


SCALE 1:24,000
CONTOUR INTERVAL 10 FEET
DATUM IS MEAN SEA LEVEL
DEPTH CURVES AND SOUNDINGS IN FEET-DATUM IS MEAN LOW WATER
SHORELINE SHOWS REPRESENTATIVE LINE OF MEAN HIGH WATER
THE MEAN RANGE OF TIDE IS APPROXIMATELY 2.8 FEET
THIS MAP COMPLIES WITH NATIONAL MAP ACCURACY STANDARDS
FOR SALE BY U.S. GEOLOGICAL SURVEY, WASHINGTON, D.C. 20542
AND VIRGINIA DIVISION OF MINERAL RESOURCES, CHARLOTTESVILLE, VIRGINIA 22903
A FOLDER DESCRIBING TOPOGRAPHIC MAPS AND SYMBOLS IS AVAILABLE ON REQUEST

ROAD CLASSIFICATION
Heavy-duty ——— Light-duty ———
Medium-duty ——— Unimproved dirt ———
Interstate Route ——— U.S. Route ——— State Route ———

U.S.G.S. WASHINGTON WEST, D.C.-MD.-VA.
N3852.5-W7700.75
1965
AMS 5561 I NE-SERIES V833
TOPOGRAPHIC DIVISION

RETURN TO:
USGS AND HISTORICAL MAP ARCHIVES



20560