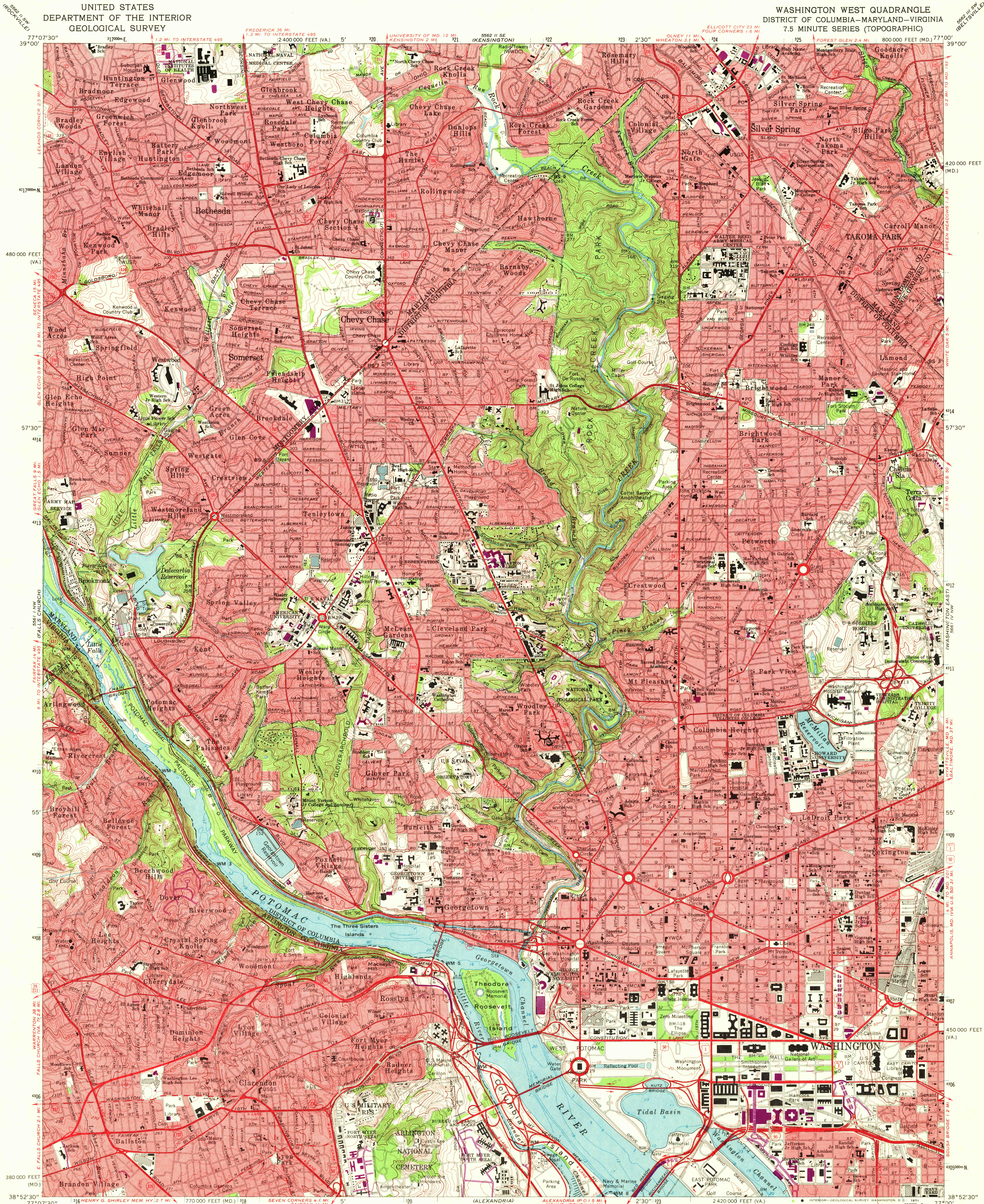
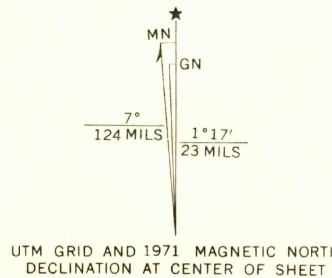


UNITED STATES  
DEPARTMENT OF THE INTERIOR  
GEOLOGICAL SURVEY

WASHINGTON WEST QUADRANGLE  
DISTRICT OF COLUMBIA—MARYLAND—VIRGINIA  
7.5 MINUTE SERIES (TOPOGRAPHIC)



Mapped, edited, and published by the Geological Survey  
Control by USGS, USC&GS, NCPs, and WSSC  
Topography by photogrammetric methods from aerial photographs  
taken 1955. Field checked 1956. Revised 1965  
Selected hydrographic data compiled from USC&GS Chart 560 (1965)  
This information is not intended for navigational purposes  
Polyconic projection. 1927 North American datum  
10,000-foot grids based on Maryland coordinate system,  
and Virginia coordinate system, north zone  
1000-meter Universal Transverse Mercator grid ticks,  
zone 18, shown in blue  
Red tint indicates areas in which only landmark buildings are shown  
Revisions shown in purple compiled from aerial photographs  
taken 1971. This information not field checked



CONTOUR INTERVAL 10 FEET  
DATUM IS MEAN SEA LEVEL  
DEPTH CURVES AND SOUNDINGS IN FEET—DATUM IS MEAN LOW WATER  
SHORELINE SHOWN REPRESENTS THE APPROXIMATE LINE OF MEAN HIGH WATER  
THE MEAN RANGE OF TIDE IS APPROXIMATELY 2.8 FEET

THIS MAP COMPLIES WITH NATIONAL MAP ACCURACY STANDARDS  
FOR SALE BY U.S. GEOLOGICAL SURVEY, WASHINGTON, D.C. 20542  
AND VIRGINIA DIVISION OF MINERAL RESOURCES, CHARLOTTESVILLE, VIRGINIA 22903  
A FOLDER DESCRIBING TOPOGRAPHIC MAPS AND SYMBOLS IS AVAILABLE ON REQUEST



USGS  
HISTORICAL FILE  
TOPOGRAPHIC DIVISION

ROAD CLASSIFICATION  
Heavy-duty ————— Light-duty —————  
Medium-duty ————— Unimproved dirt —————  
Interstate Route U.S. Route State Route

WASHINGTON WEST, D.C.—MD.—VA.  
N3852.5—W7700.7.5

1965  
PHOTOREVISED 1971  
AMS 5561 I NE—SERIES V833

OCT 19 1971