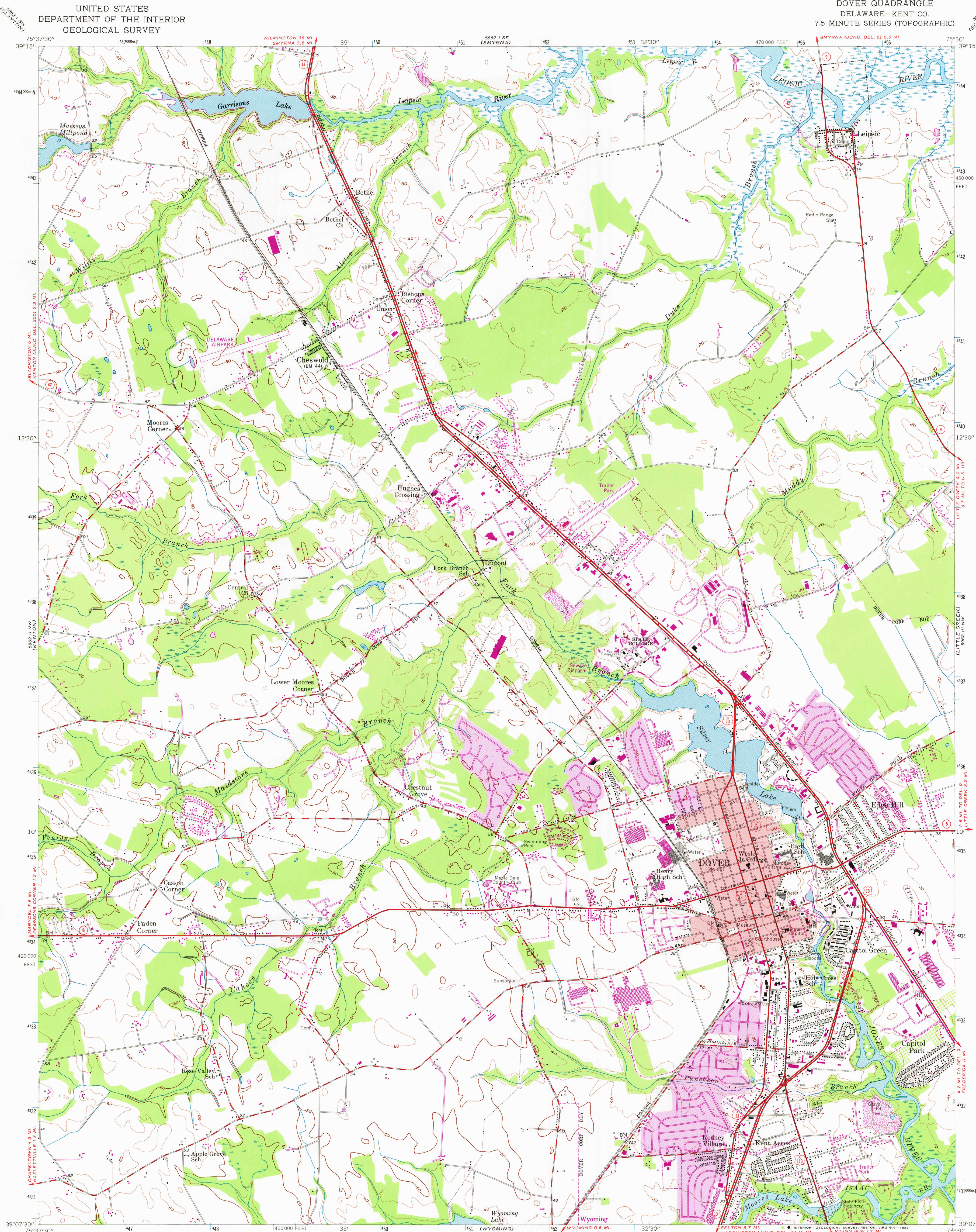


UNITED STATES
DEPARTMENT OF THE INTERIOR
GEOLOGICAL SURVEY

DOVER QUADRANGLE
DELAWARE-KENT CO.
7.5 MINUTE SERIES (TOPOGRAPHIC)



Mapped, edited, and published by the Geological Survey

Control by USGS and NOS/NOAA

Culture and drainage in part compiled from aerial photographs taken 1951. Topography enlarged from 1:62,500-scale map of Wyoming quadrangle, 15-minute series. Original map by planimeter surveys 1926. Revised 1956

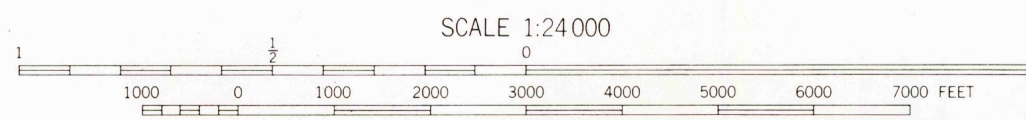
Polyconic projection. 10,000-foot grid ticks based on Delaware coordinate system. 1000-meter Universal Transverse Mercator grid ticks, zone 18, shown in blue. 1927 North American Datum. To place on the predicted North American Datum 1983 move the projection lines 7 meters south and 30 meters west as shown by dashed corner ticks

Red tint indicates area in which only landmark buildings are shown

Revisions shown in purple and woodland compiled from aerial photographs taken 1981 and other sources. This information not field checked. Map edited 1981

Purple tint indicates extension of urban areas

UTM GRID AND 1981 MAGNETIC NORTH DECLINATION AT CENTER OF SHEET



CONTOUR INTERVAL 10 FEET
NATIONAL GEODETIC VERTICAL DATUM OF 1929

THIS MAP COMPLIES WITH NATIONAL MAP ACCURACY STANDARDS
FOR SALE BY U.S. GEOLOGICAL SURVEY, RESTON, VIRGINIA 22092
A FOLDER DESCRIBING TOPOGRAPHIC MAPS AND SYMBOLS IS AVAILABLE ON REQUEST

ROAD CLASSIFICATION
Heavy-duty ——— Light-duty ———
Medium-duty ——— Unimproved dirt ———
U.S. Route ——— State Route ———

DOVER, DEL.

N 3907.5—W 75301.7.5

1956
PHOTOREVISED 1981
DMS 5862 II NE-SERIES V832

JUL 23 1982

2050