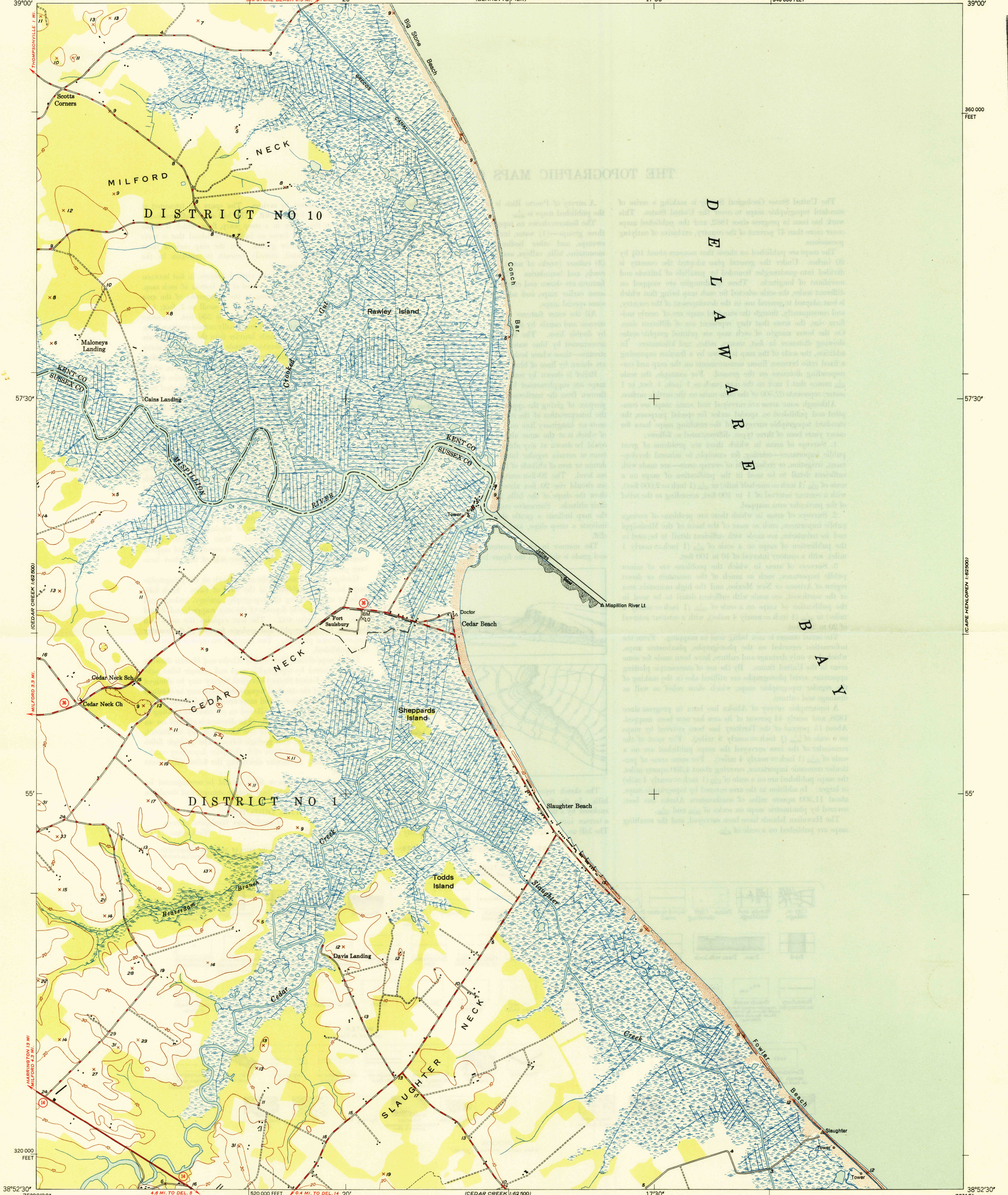


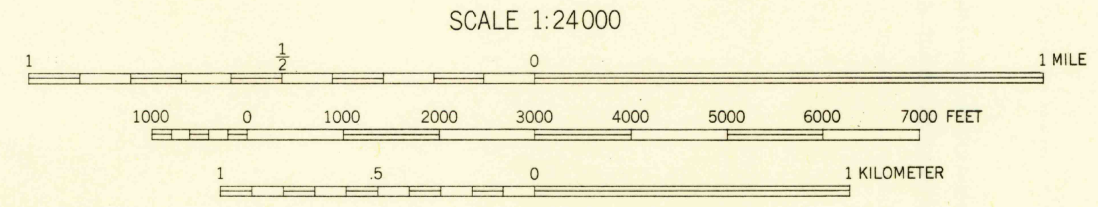
U.S.G.S.  
FILE COPY  
Inspection and Editing.

U.S.G.S.  
FILE COPY  
Inspection and Editing.



Mapped by U.S. Coast & Geodetic Survey  
Edited and published by the Geological Survey  
Control by USC&GS  
Culture and drainage in part compiled from  
aerial photographs taken 1946  
Topography by plane-table methods 1946  
Polyconic projection, 1927 North American datum  
10,000-foot grid based on Delaware coordinate system  
No distinction is made between dwellings, barns,  
commercial and industrial buildings

84°  
TRUE NORTH  
MAGNETIC NORTH  
APPROXIMATE MEAN  
DECLINATION, 1946



SCALE 1:24000  
CONTOUR INTERVAL 10 FEET  
DATUM IS MEAN SEA LEVEL  
SHORELINE SHOWN REPRESENTS THE APPROXIMATE LINE OF MEAN HIGH WATER  
THE AVERAGE RANGE OF TIDE IS APPROXIMATELY 5 FEET

THIS MAP COMPLIES WITH NATIONAL MAP ACCURACY STANDARDS.  
FOR SALE BY U. S. GEOLOGICAL SURVEY, WASHINGTON 25, D. C.

USGS  
Historical File  
Topographic Division

ROAD CLASSIFICATION	
HARD-SURFACE ALL WEATHER ROADS	DRY WEATHER ROADS
Heavy-duty  FLAMEGLASS	Improved dirt
Medium-duty  FLAMEGLASS	Unimproved dirt
Loose-surface, graded, or narrow hard-surface	
U. S. Route	State Route

U.S.G.S.  
FILE COPY  
Inspection and Editing.

MISPILLION RIVER, DEL.  
NE/4 CEDAR CREEK 15' QUADRANGLE  
N3852.5-W7515.75

EDITION OF 1949  
NOV 9 1949

2030