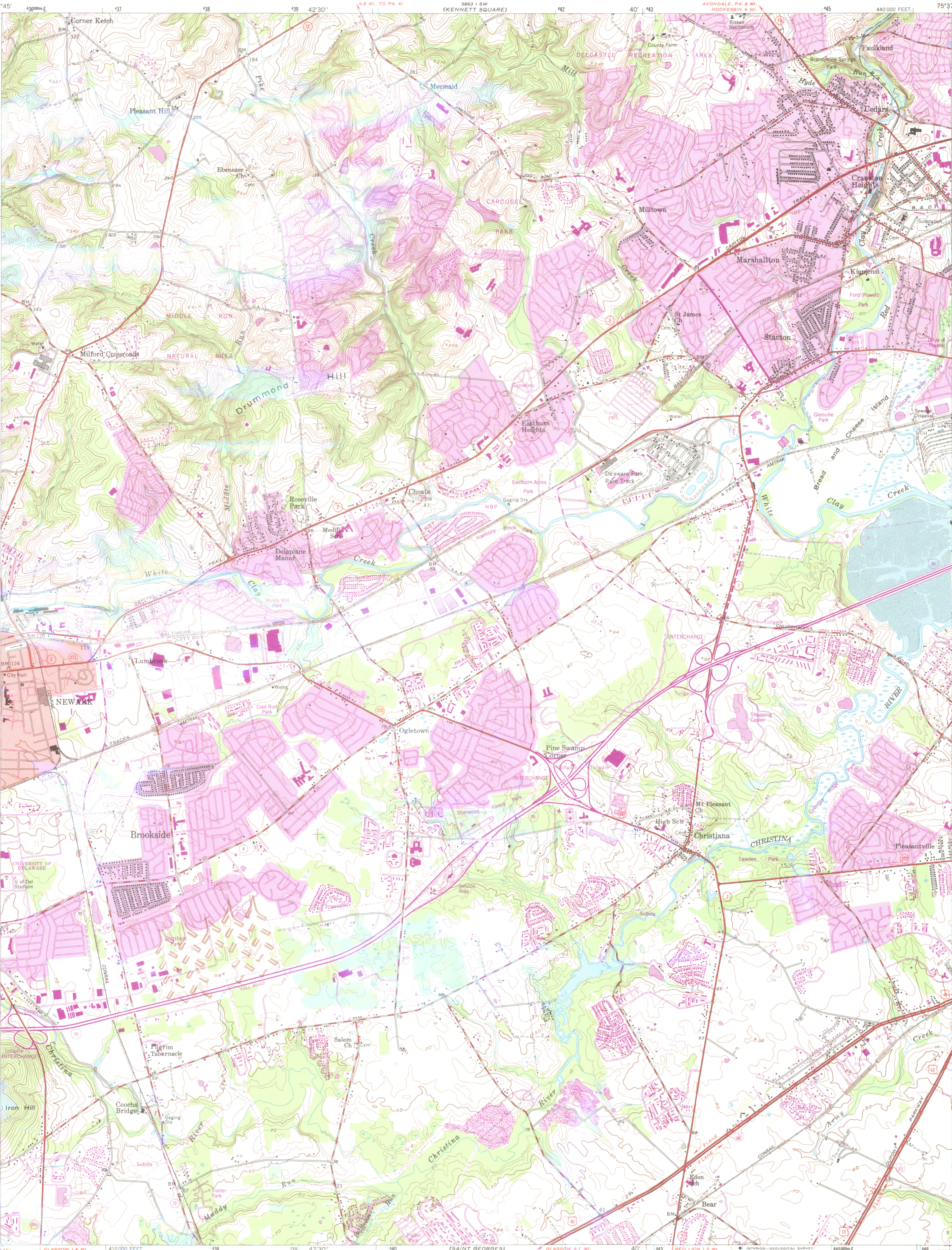


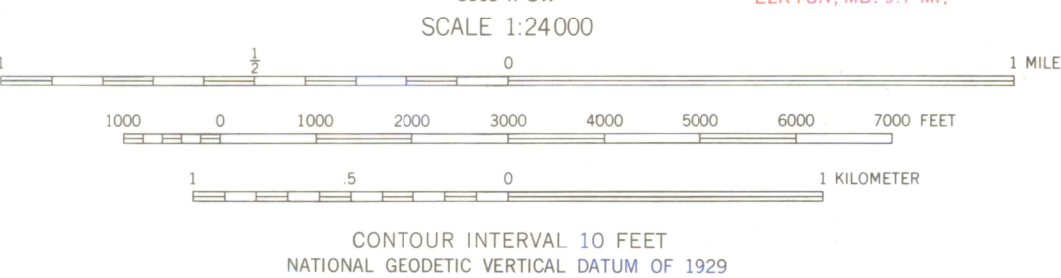
UNITED STATES
DEPARTMENT OF THE INTERIOR
GEOLOGICAL SURVEY

NEWARK EAST QUADRANGLE
DELAWARE-NEW CASTLE CO.
7.5 MINUTE SERIES (TOPOGRAPHIC)



Mapped, edited, and published by the Geological Survey
Control by USGS, NOS/NOAA, and Delaware Geodetic Survey
Topography by photogrammetric methods from aerial photographs
taken 1951. Field checked 1953
Polyconic projection. 10,000-foot grid ticks based on
Delaware coordinate system
1000-meter Universal Transverse Mercator grid ticks,
zone 18, shown in blue
1927 North American Datum
To place on the predicted North American Datum 1983
move the projection lines 6 meters south and
30 meters west as shown by dashed corner ticks
Red tint indicates area in which only landmark buildings are shown

Revisions shown in purple and woodland compiled from
aerial photographs taken 1982 and other sources
This information not field checked. Map edited 1985
Purple tint indicates extension of urban areas



ROAD CLASSIFICATION
Primary highway, all weather, hard surface
Secondary highway, all weather, hard surface
Light-duty road, all weather, improved surface
Unimproved road, fair or dry weather
Interstate Route
U.S. Route
State Route
NEWARK EAST, DEL.
39075-F6-TF-024
1953
PHOTOREVISED 1985
DMA 5863 II NW-SERIES V832



LIBRARY OF
FEB 1
COPY
GEOGRAPHIC