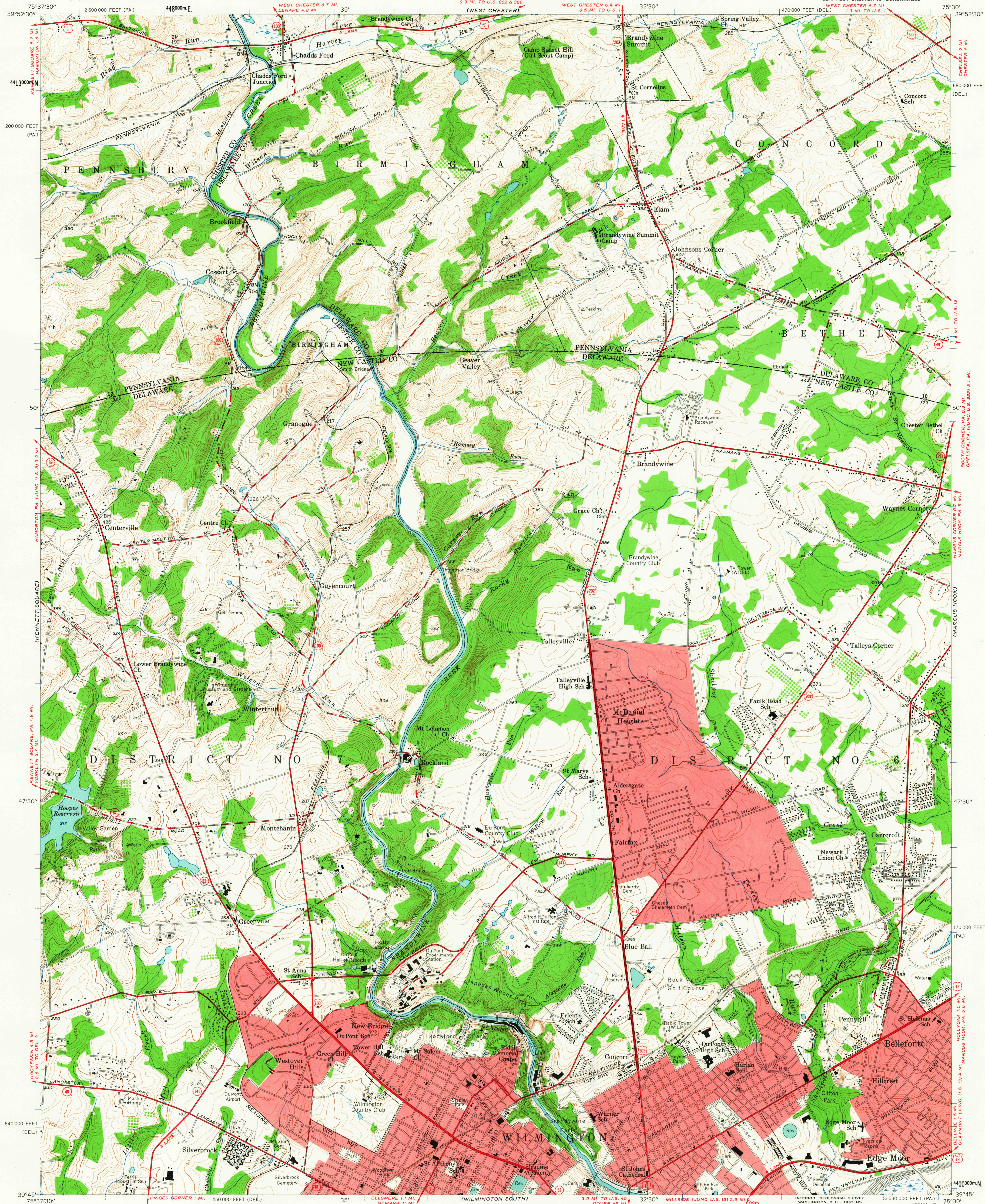


UNITED STATES
DEPARTMENT OF THE INTERIOR
GEOLOGICAL SURVEY

WILMINGTON NORTH QUADRANGLE
DELAWARE-PENNSYLVANIA
7.5 MINUTE SERIES (TOPOGRAPHIC)
SE 1/4 WEST CHESTER 15' QUADRANGLE



Mapped, edited, and published by the Geological Survey

Control by USGS and USC&GS

Topography in Delaware by plane-table surveys 1935-1936
Revised 1954. Topography in Pennsylvania from aerial photographs
by Wild A-5. Aerial photographs taken 1950. Field check 1954

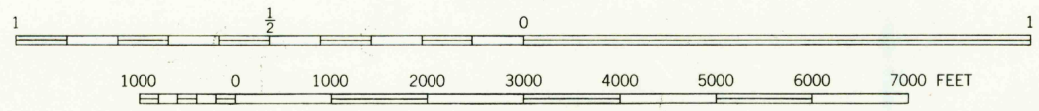
Polyconic projection. 1927 North American datum
10,000-foot grids based on Delaware coordinate system,
and Pennsylvania coordinate system, south zone

Red tint indicates areas in which only
landmark buildings are shown

Unchecked elevations are shown in brown

1000-meter Universal Transverse Mercator grid ticks,
zone 18, shown in blue

SCALE 1:24,000



CONTOUR INTERVAL 10 FEET
DATUM IS MEAN SEA LEVEL

THIS MAP COMPLIES WITH NATIONAL MAP ACCURACY STANDARDS
FOR SALE BY U. S. GEOLOGICAL SURVEY, WASHINGTON 25, D. C.
A FOLDER DESCRIBING TOPOGRAPHIC MAPS AND SYMBOLS IS AVAILABLE ON REQUEST

USGS
Historical File
Topographic Division

ROAD CLASSIFICATION
Heavy-duty ——— Light-duty ———
Medium-duty ——— Unimproved dirt ———
U. S. Route ——— State Route ———

WILMINGTON NORTH, DEL.—PA.

SE 1/4 WEST CHESTER 15' QUADRANGLE
N 39°45'—W 75°30'7.5

1954

TOPOGRAPHIC DIVISION

SEP 12 1963