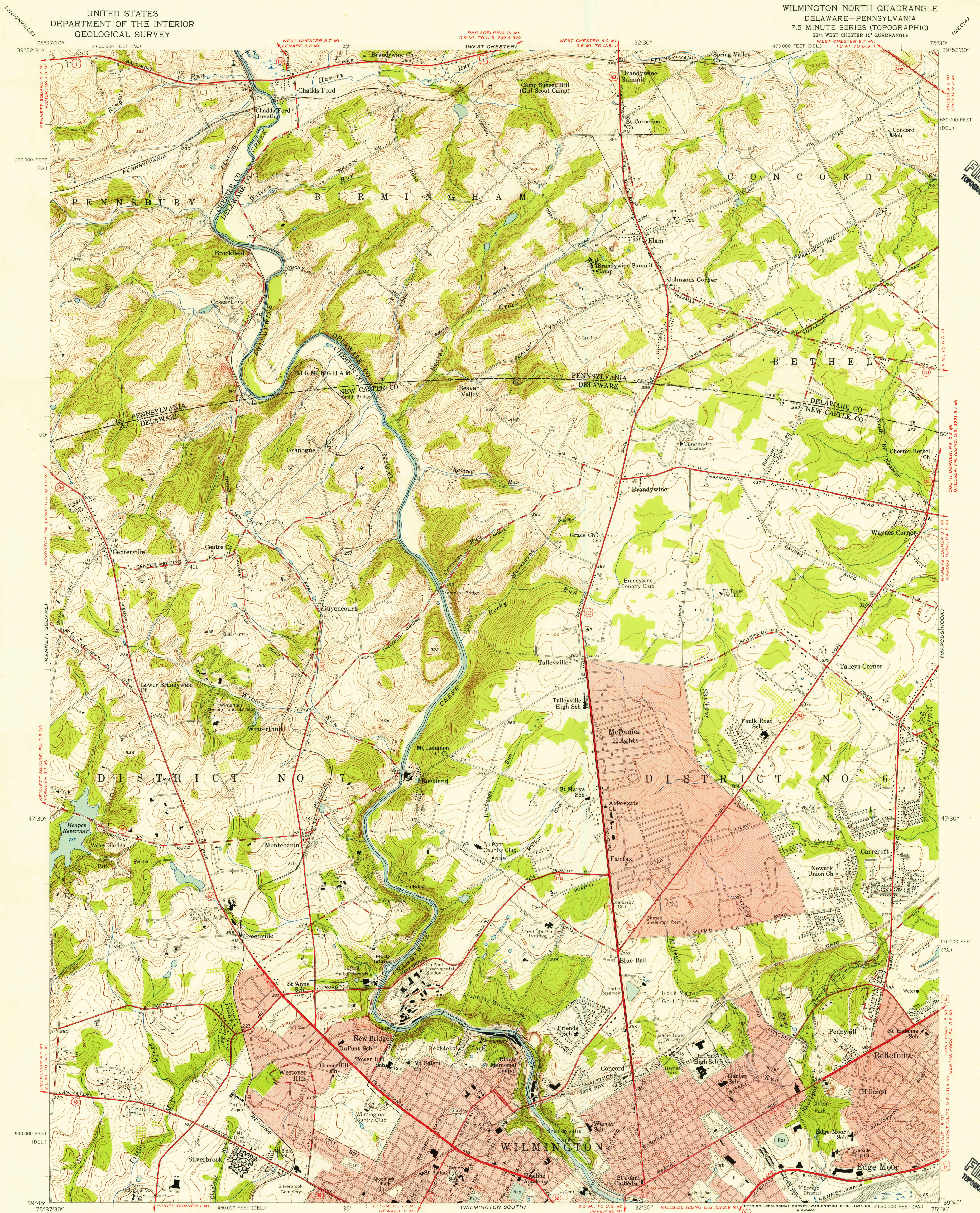


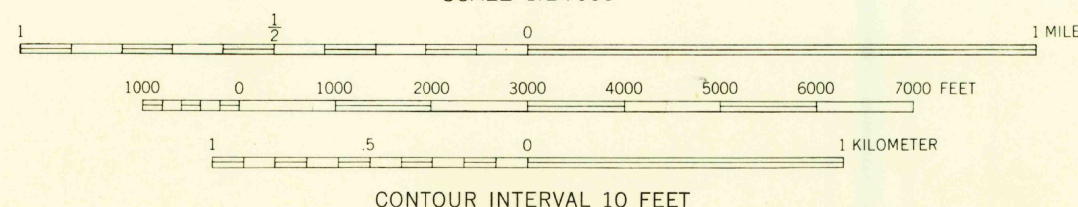
UNITED STATES  
DEPARTMENT OF THE INTERIOR  
GEOLOGICAL SURVEY

WILMINGTON NORTH QUADRANGLE  
DELAWARE-PENNSYLVANIA  
7.5 MINUTE SERIES (TOPOGRAPHIC)  
SE/4 WEST CHESTER 15' QUADRANGLE



Mapped, edited, and published by the Geological Survey  
Control by USGS and USC&GS  
Topography in Delaware by plane-table surveys 1935-1936  
Revised 1954. Topography in Pennsylvania from aerial photographs  
by Wild A-5. Aerial photographs taken 1950. Field check 1954  
Polyconic projection. 1927 North American datum  
10,000-foot grids based on Delaware coordinate system,  
and Pennsylvania coordinate system, south zone  
Red tint indicates areas in which only  
landmark buildings are shown  
Unchecked elevations are shown in brown

APPROXIMATE MEAN  
DECLINATION, 1954



USGS  
Historical File  
Topographic Division

ROAD CLASSIFICATION  
Heavy-duty ——— Light-duty ———  
Medium-duty ——— Unimproved dirt ———  
U.S. Route ——— State Route ———

WILMINGTON NORTH, DEL.-PA.  
SE/4 WEST CHESTER 15' QUADRANGLE  
N 3945-W 7530/7.5

1954

JAN 3 1956

4245