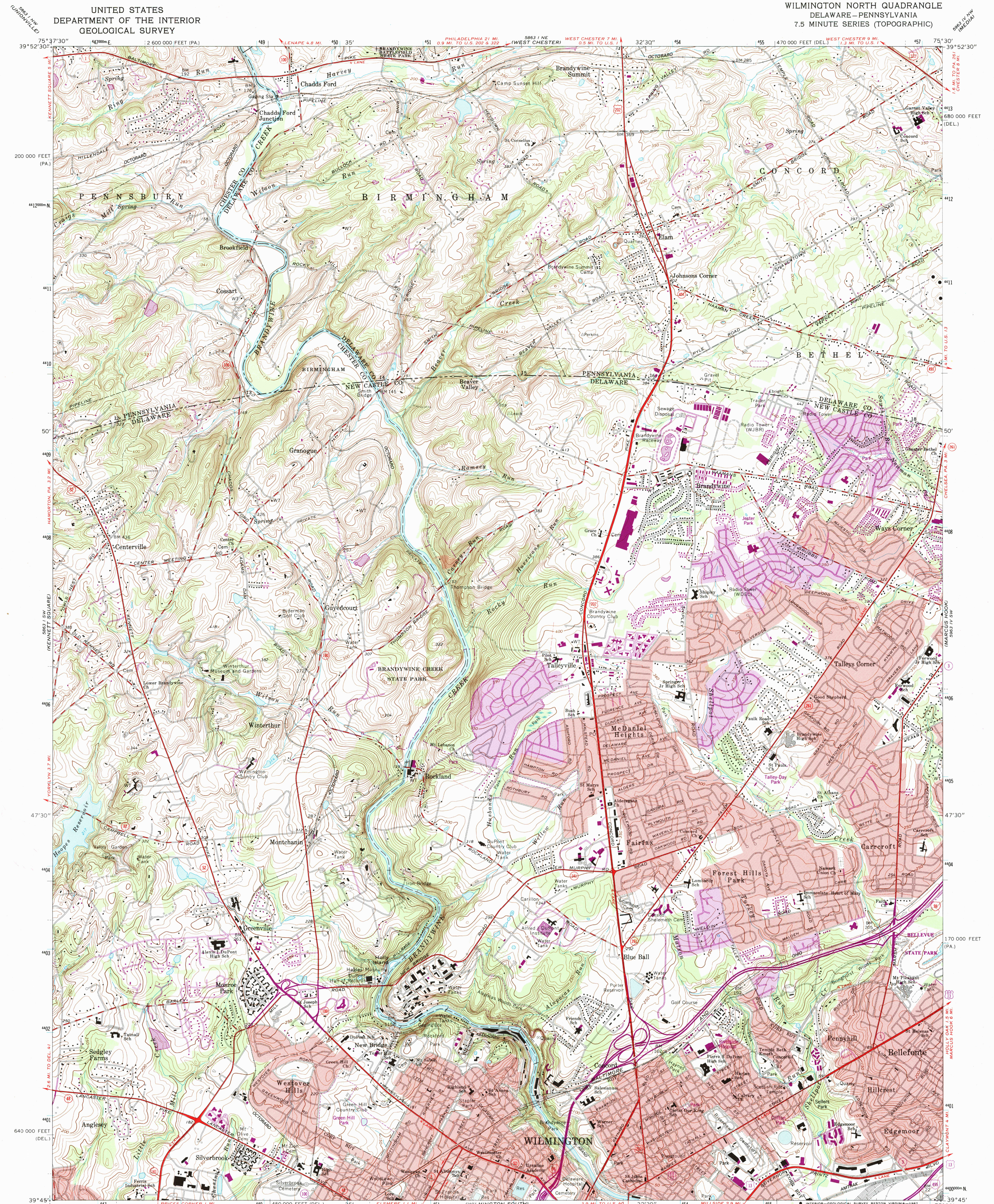
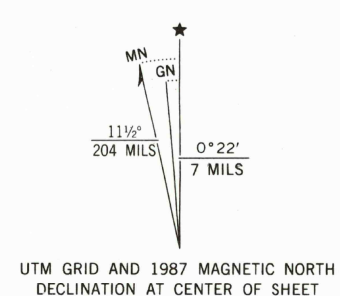


UNITED STATES  
DEPARTMENT OF THE INTERIOR  
GEOLOGICAL SURVEY

WILMINGTON NORTH QUADRANGLE  
DELAWARE-PENNSYLVANIA  
7.5 MINUTE SERIES (TOPOGRAPHIC)



Mapped, edited and published by the Geological Survey  
Control by USGS and NOS/NOAA  
Topography in Delaware by plane-table surveys 1935-1936  
Topography in Pennsylvania by photogrammetric methods  
from aerial photographs taken 1950. Field checked 1954  
Revised from aerial photographs taken 1965. Field checked 1967  
Polyconic projection. 10,000-foot grid ticks based on Delaware  
coordinate system and Pennsylvania coordinate system, south zone  
1000-meter Universal Transverse Mercator grid ticks,  
zone 18, shown in blue. 1927 North American Datum  
To place on the predicted North American Datum 1983  
move the projection lines 5 meters south and  
32 meters west as shown by dashed corner ticks  
Fine red dashed lines indicate selected fence and field lines where  
generally visible on aerial photographs. This information is unchecked  
Red tint indicates areas in which only landmark buildings are shown  
There may be private inholdings within the boundaries of  
the National or State reservations shown on this map



SCALE 1:24,000  
CONTOUR INTERVAL 10 FEET  
NATIONAL GEODETIC VERTICAL DATUM OF 1929

THIS MAP COMPLIES WITH NATIONAL MAP ACCURACY STANDARDS  
FOR SALE BY U.S. GEOLOGICAL SURVEY  
DENVER, COLORADO 80225 OR RESTON, VIRGINIA 22092  
A FOLDER DESCRIBING TOPOGRAPHIC MAPS AND SYMBOLS IS AVAILABLE ON REQUEST

Revisions shown in purple and woodland compiled from  
aerial photographs taken 1982 and other sources. This  
information not field checked. Map edited 1987  
Purple tint indicates extension of urban areas

ROAD CLASSIFICATION  
Heavy-duty ——— Light-duty ———  
Medium-duty ——— Unimproved dirt ———  
Interstate Route U.S. Route State Route

WILMINGTON NORTH, DEL.-PA.  
39075-G5-TF-024

1967  
PHOTOREVISED 1987  
DMA 5863 1 SE-SERIES V852