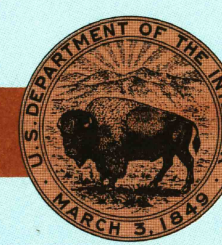


30 X 60 MINUTE QUADRANGLE
SHOWING

- Contours and elevations in meters
- Highways, roads and other manmade structures
- Water features
- Woodland areas
- Geographic names



GEOLOGICAL SURVEY

1981

Produced by the United States Geological Survey in cooperation with the Soil Conservation Service. Compiled from USGS 1:24 000-scale topographic maps dated 1955-1973 and orthophotomaps dated 1972-1973. Planimetry revised from aerial photographs taken 1979 and other source data. Revised information not field checked. Map edited 1981. Projection and 10 000-meter grid, zone 17, Universal Transverse Mercator. 25 000-foot grid ticks based on Florida coordinate system, east zone, 1927 North American Datum. To place on the predicted North American Datum 1983 move the projection lines 40 meters south and 22 meters west. Offshore projection survey data, shown in red, compiled by the Bureau of Land Management. Heavy lines indicate limits of BLM Outer Continental Shelf Official Protection Diagram dated October 24, 1978. The protections on this map are not for Federal leasing purposes; for such purposes, refer to the 1:250 000-scale OCS Official Protection Diagrams available from the Bureau of Land Management. There may be private inholdings within the boundaries of the National or State reservations shown on this map.

CONTOUR INTERVAL: 5 METERS
NATIONAL GEODETIC VERTICAL DATUM OF 1929
ELEVATIONS SHOWN TO THE NEAREST METER

THIS MAP COMPLIES WITH NATIONAL MAP ACCURACY STANDARDS

CONVERSION TABLE		DECLINATION DIAGRAM		ADJOINING MAPS			
Meters	Feet	MAGNETIC DECLINATION 1981 36° 25' E 0° 15' W		1	2	3	
1	3.2808			4	5	6	7
2	6.5617						
3	9.8425						
4	13.1234						
5	16.4042						
6	19.6850						
7	22.9659						
8	26.2467						
9	29.5275						
10	32.8084						
To convert meters to feet multiply by 3.2808		UTM grid convergence (CM) and 1981 magnetic declination (MM) at center of map. Diagram is approximate.		1 Naples 2 Fort Lauderdale 3 Everglades City 4 Cape Sable 5 Homestead			
To convert feet to meters multiply by 0.3048							

FOR SALE BY U. S. GEOLOGICAL SURVEY
RESTON, VIRGINIA 22092

Topographic Map Symbols

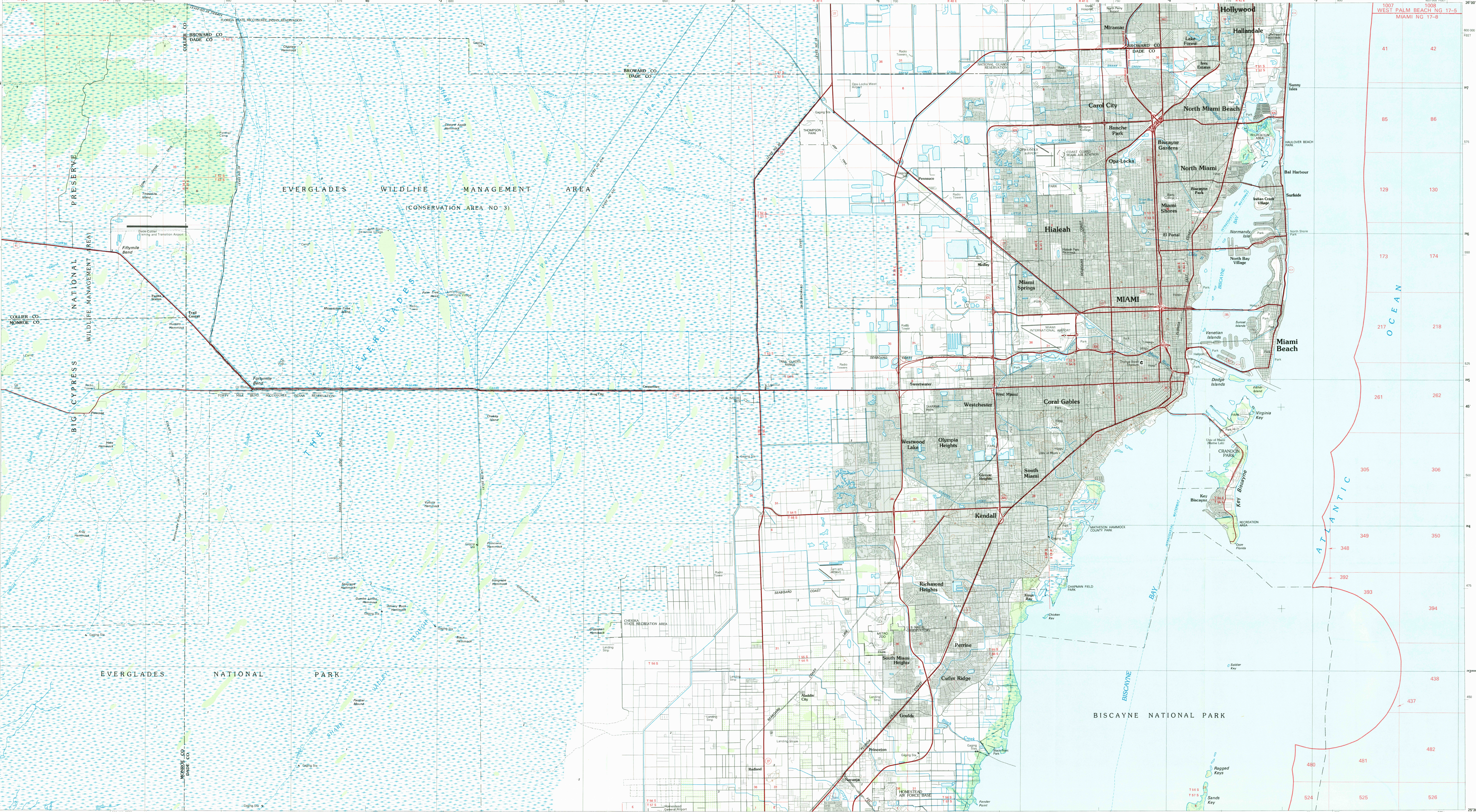
Primary highway, hard surface	Secondary highway, hard surface	Light duty road, gravel street, hard or improved surface	Other road or street, trail	Route marker: Interstate; U. S. State	Railroad: standard gage; narrow gage	Bridge: overpass, underpass	Tunnel: road, railroad	Built up area; locality; elevation	Airport: landing field; landing strip	National boundary	State boundary	County boundary	National or State reservation boundary	Land grant boundary	U. S. public lands survey: range, township, section	Range, township; section line: projected	Power transmission line, pipeline	Dam; dam with lock	Cemetery; building	Well; water well; spring	Mine shaft; adit or cave; mine, quarry; gravel pit	Campground; picnic area; U. S. location monument	Run; cliff dwelling	Distorted surface: strip mine, lava, sand	Contours: index, intermediate, supplementary	Bathymetric contours: index, intermediate	Stream, lake: perennial, intermittent	Rapids, large and small; falls, large and small	Area to be submerged: marsh, swamp	Land subject to controlled inundation, woodland	Scrub; mangrove	Orchard; vineyard
-------------------------------	---------------------------------	--	-----------------------------	---------------------------------------	--------------------------------------	-----------------------------	------------------------	------------------------------------	---------------------------------------	-------------------	----------------	-----------------	--	---------------------	---	--	-----------------------------------	--------------------	--------------------	--------------------------	--	--	---------------------	---	--	---	---------------------------------------	---	------------------------------------	---	-----------------	-------------------

A pamphlet describing topographic maps is available on request

RETURN TO:
NATIONAL MAP ARCHIVES
RESTON, VA 22092

MIAMI, FLORIDA
N2530-W8000/30 X 60

1981



SCALE 1:100 000

1 CENTIMETER ON THE MAP REPRESENTS 1 KILOMETER ON THE GROUND
CONTOUR INTERVAL: 5 METERS

