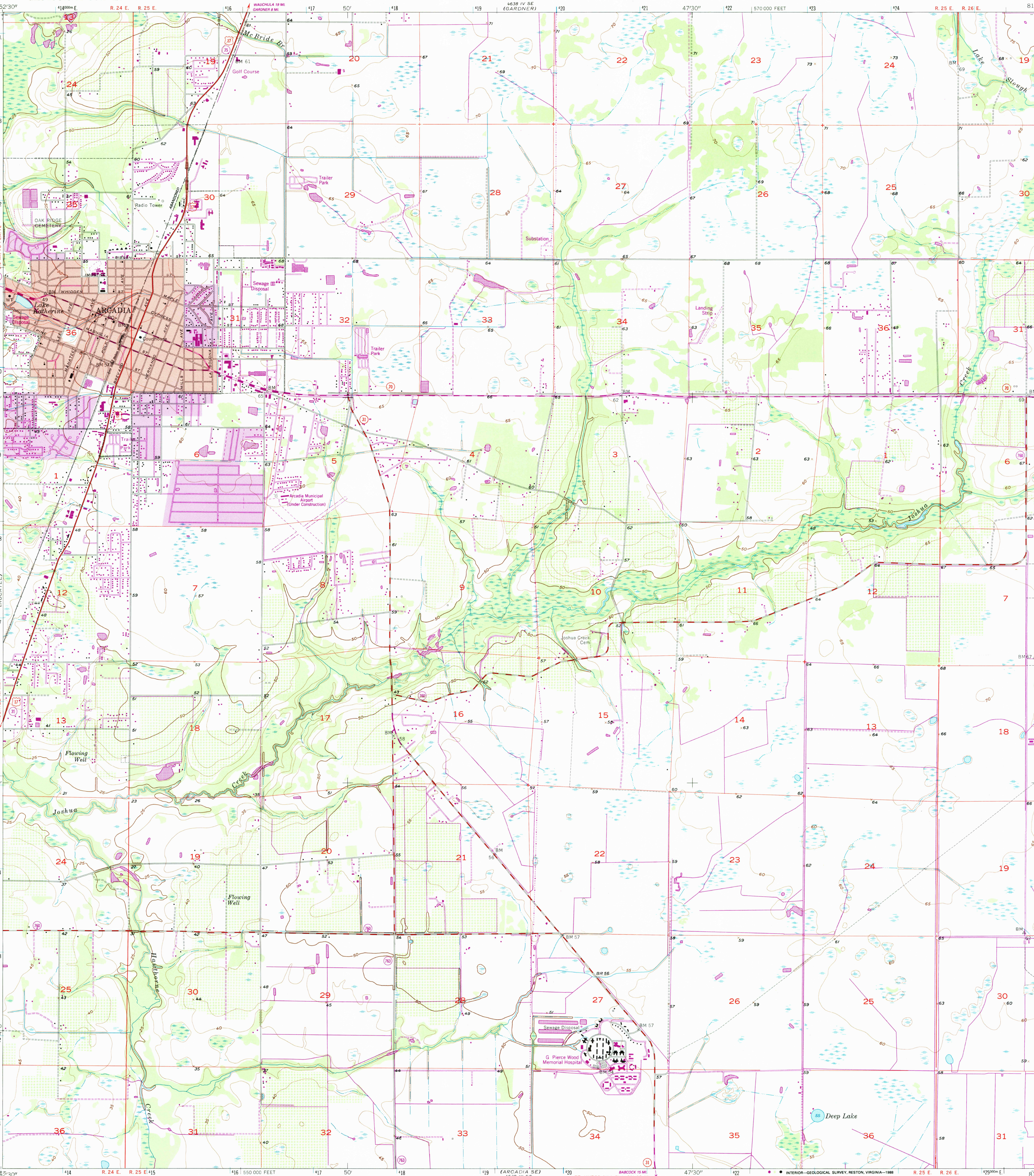


UNITED STATES
DEPARTMENT OF THE INTERIOR
GEOLOGICAL SURVEY

ARCADIA QUADRANGLE
FLORIDA—DE SOTO CO.
7.5 MINUTE SERIES (TOPOGRAPHIC)



Mapped, edited, and published by the Geological Survey
Control by USGS, USC&GS, and Florida Geodetic Survey

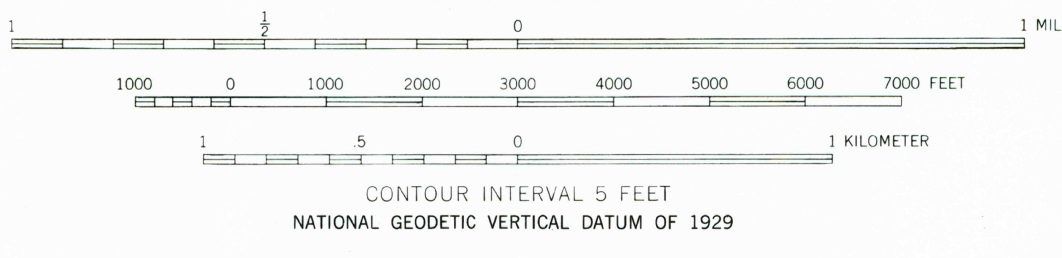
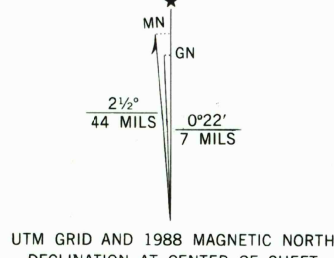
Culture and drainage in part compiled from aerial photographs
taken 1952. Topography by planetable surveys 1956-1957

Polyconic projection. 1927 North American datum
10,000-foot grid based on Florida coordinate system, west zone
1000-meter Universal Transverse Mercator grid ticks,
zone 17, shown in blue

To place on the predicted North American Datum 1983
move the projection lines 33 meters south and
18 meters west as shown by dashed corner ticks

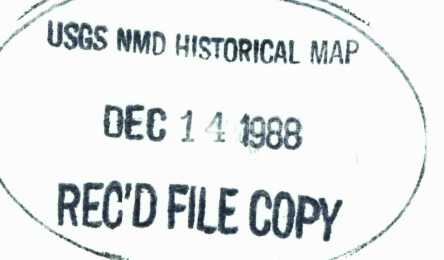
Red tint indicates area in which only landmark buildings are shown

Revisions shown in purple and woodland compiled in cooperation
with State of Florida agencies from aerial photographs taken 1984
and other sources. This information not field checked
Map edited 1988
Purple tint indicates extension of urban areas



THIS MAP COMPLIES WITH NATIONAL MAP ACCURACY STANDARDS
FOR SALE BY U.S. GEOLOGICAL SURVEY
DENVER, COLORADO 80225 OR RESTON, VIRGINIA 22092
A FOLDER DESCRIBING TOPOGRAPHIC MAPS AND SYMBOLS IS AVAILABLE ON REQUEST

ROAD CLASSIFICATION	
Heavy-duty	Light-duty
Medium-duty	Unimproved dirt
U.S. Route	State Route



ARCADIA, FLA.
27081-87-1F-024

1957
PHOTOREVISED 1988
DMA 4638 III NE—SERIES V847