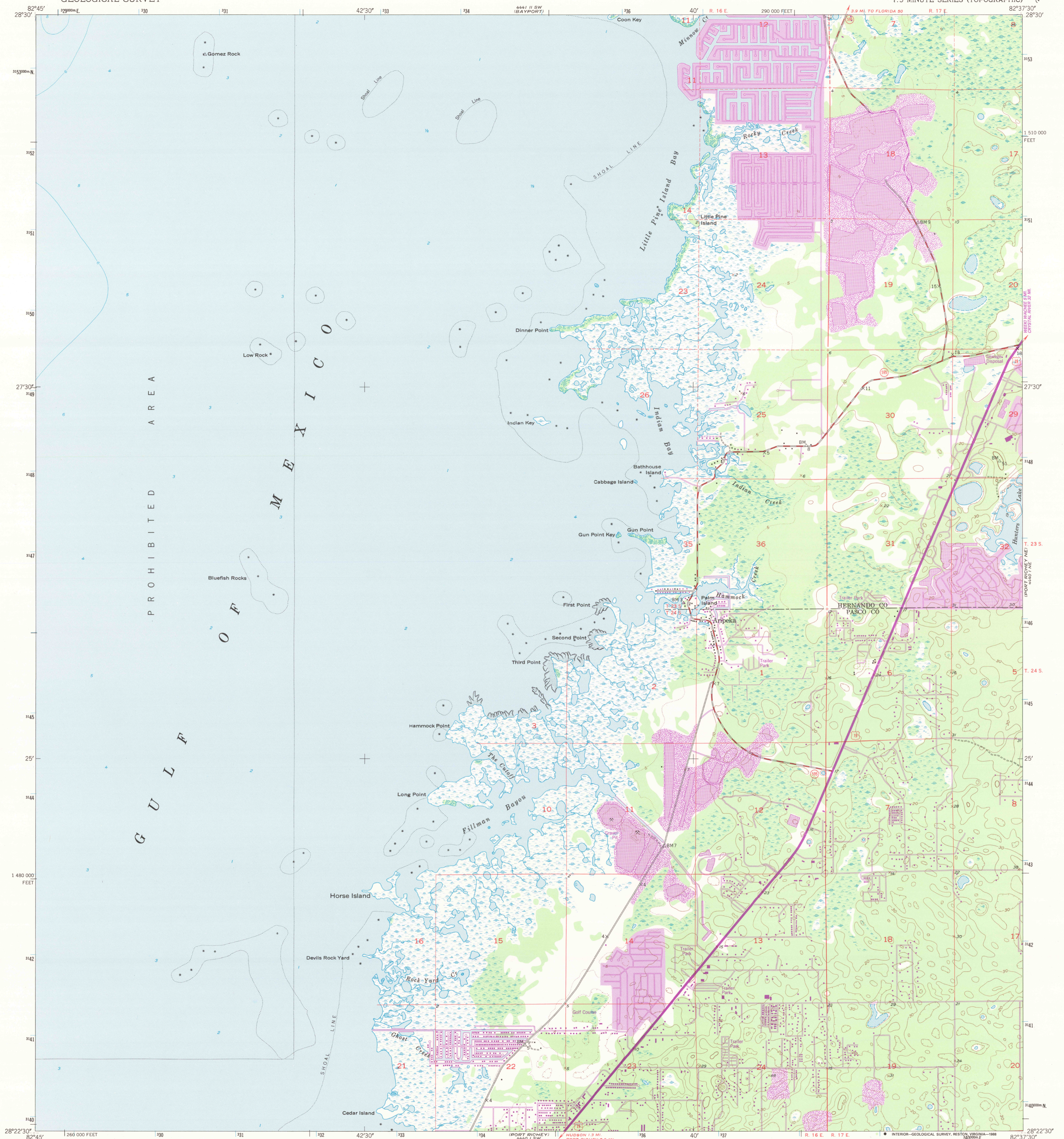
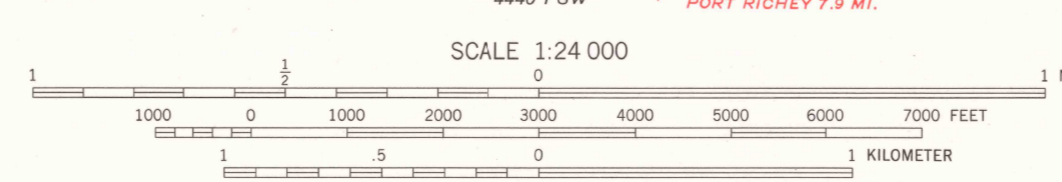
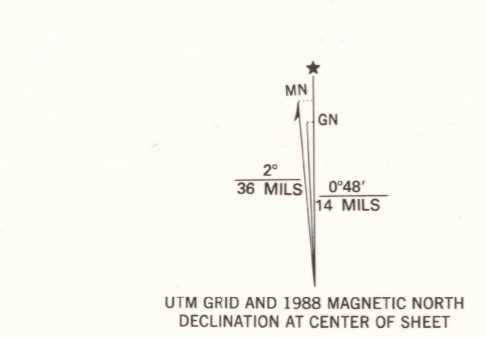


See II, 25,
(WEEKLY WAPEE
SPRING)



PROHIBITED AREA
GULF OF MEXICO

Mapped, edited, and published by the Geological Survey
Control by USGS and USC&GS
Topography from aerial photographs by Kelsh plotter and by plane-table surveys 1954. Aerial photographs taken 1951
Hydrography from USC&GS Chart 1258 (1:80 000)
Polyconic projection. 1927 North American datum
10,000-foot grid based on Florida coordinate system, west zone
Dashed land lines indicate approximate locations
1000-metre Universal Transverse Mercator grid ticks, zone 17, shown in blue
To place on the predicted North American Datum 1983, move the projection lines 27 meters south and 16 meters west as shown by dashed corner ticks
Purple tint indicates extension of urban areas



CONTOUR INTERVAL 10 FEET
DOTTED LINES REPRESENT HALF-INTERVAL CONTOURS
NATIONAL GEODETIC VERTICAL DATUM OF 1929
DEPTH CURVES AND SOUNDINGS IN FEET-DATUM IS MEAN LOW WATER
SHORELINE SHOWN REPRESENTS THE APPROXIMATE LINE OF MEAN HIGH WATER
THE NEAR RANGE OF TIDE IS APPROXIMATELY 2 FEET

THIS MAP COMPLIES WITH NATIONAL MAP ACCURACY STANDARDS
FOR SALE BY U. S. GEOLOGICAL SURVEY
DENVER, COLORADO 80225, OR RESTON, VIRGINIA 22092
A FOLDER DESCRIBING TOPOGRAPHIC MAPS AND SYMBOLS IS AVAILABLE ON REQUEST



ROAD CLASSIFICATION

Heavy-duty	4 LANE 6 LANE	Light-duty
Medium-duty	4 LANE 6 LANE	Unimproved dirt
U. S. Route		State Route

ARIPEKA, FLA.
28082-D6-TF-024
1954
PHOTOREVISED 1988
DMA 4441 1 NW-SERIES V847

ROAD CLASSIFICATION
Heavy-duty 4 LANE 6 LANE Light-duty
Medium-duty 4 LANE 6 LANE Unimproved dirt
U. S. Route State Route

ARIPEKA, FLA.
28082-D6-TF-024
1954
PHOTOREVISED 1988
DMA 4441 1 NW-SERIES V847