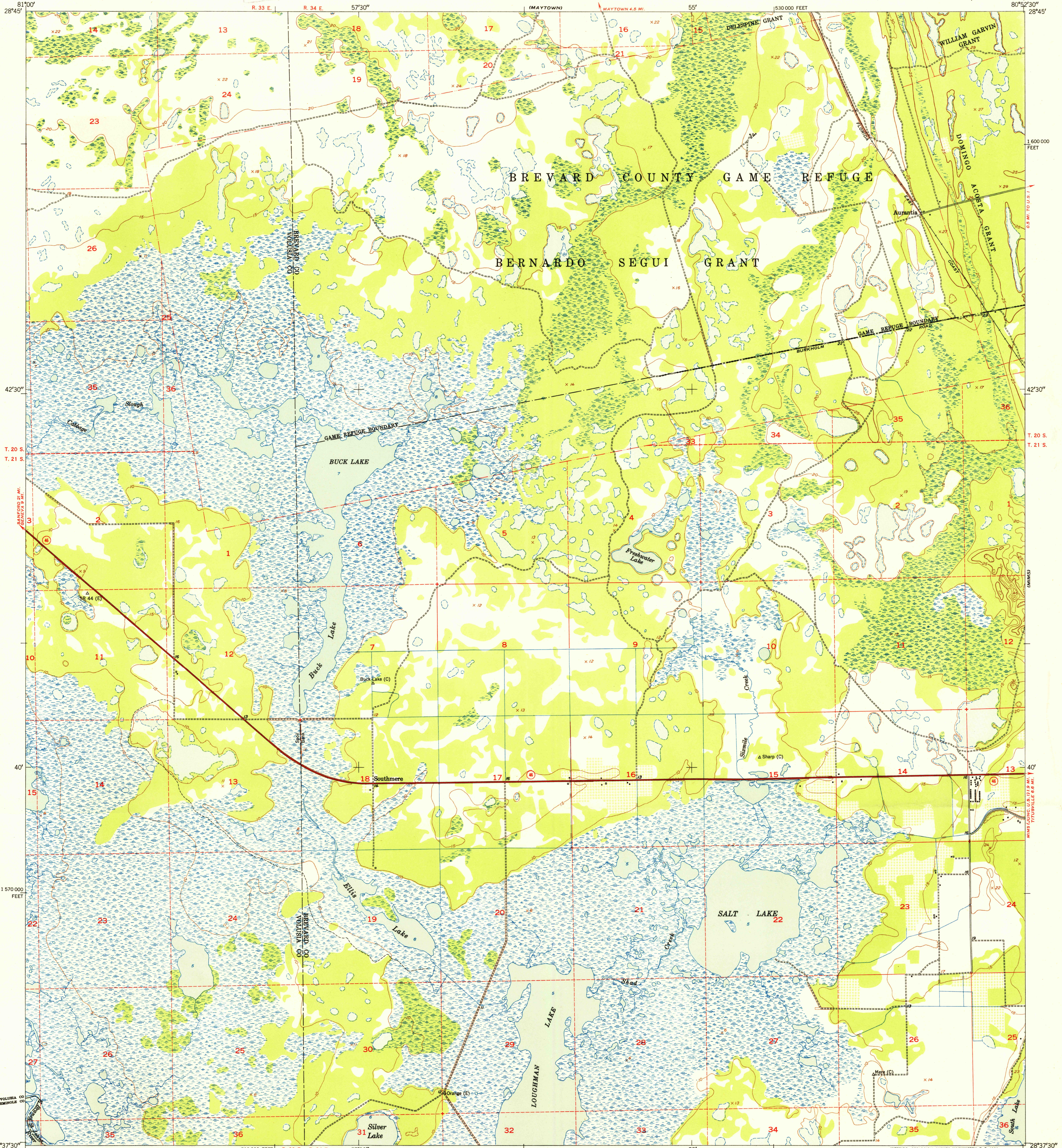
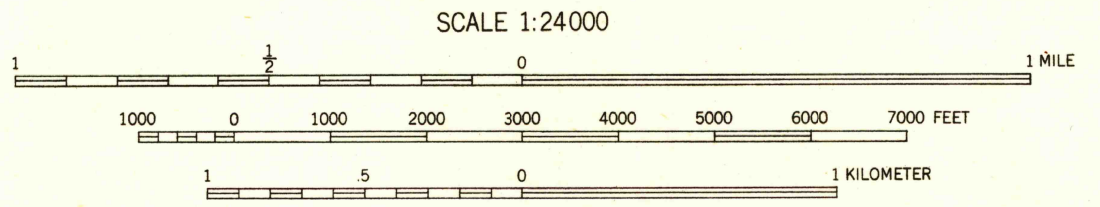


U.S.G.S.  
FILE COPY  
Inspection and Printing



Mapped by the U. S. Coast & Geodetic Survey  
Edited and published by the Geological Survey  
Control by USCG&S(C) and USCE (E)  
Culture and drainage in part compiled from  
aerial photographs taken 1948  
Topography by plane-table methods 1949. Field check 1950  
Polyconic projection. 1927 North American datum  
10,000-foot grid based on Florida coordinate system,  
east zone  
Dashed land lines indicate approximate location

TRUE NORTH  
MAGNETIC NORTH  
APPROXIMATE MEAN  
DECLINATION, 1950



SCALE 1:24,000  
CONTOUR INTERVAL 5 FEET  
DATUM IS MEAN SEA LEVEL

ROAD CLASSIFICATION  
Heavy-duty 4 LANE 16 LANE Light-duty  
Medium-duty 4 LANE 16 LANE Unimproved dirt  
U. S. Route State Route

USGS  
Historical File  
Topographic Division  
U.S.G.S.  
FILE COPY  
Inspection and Printing

AURANTIA, FLA.  
N2837.5-W8052.5/7.5

1950

THIS MAP COMPLIES WITH NATIONAL MAP ACCURACY STANDARDS  
FOR SALE BY U. S. GEOLOGICAL SURVEY, WASHINGTON 25, D. C.  
A FOLDER DESCRIBING TOPOGRAPHIC MAPS AND SYMBOLS IS AVAILABLE ON REQUEST