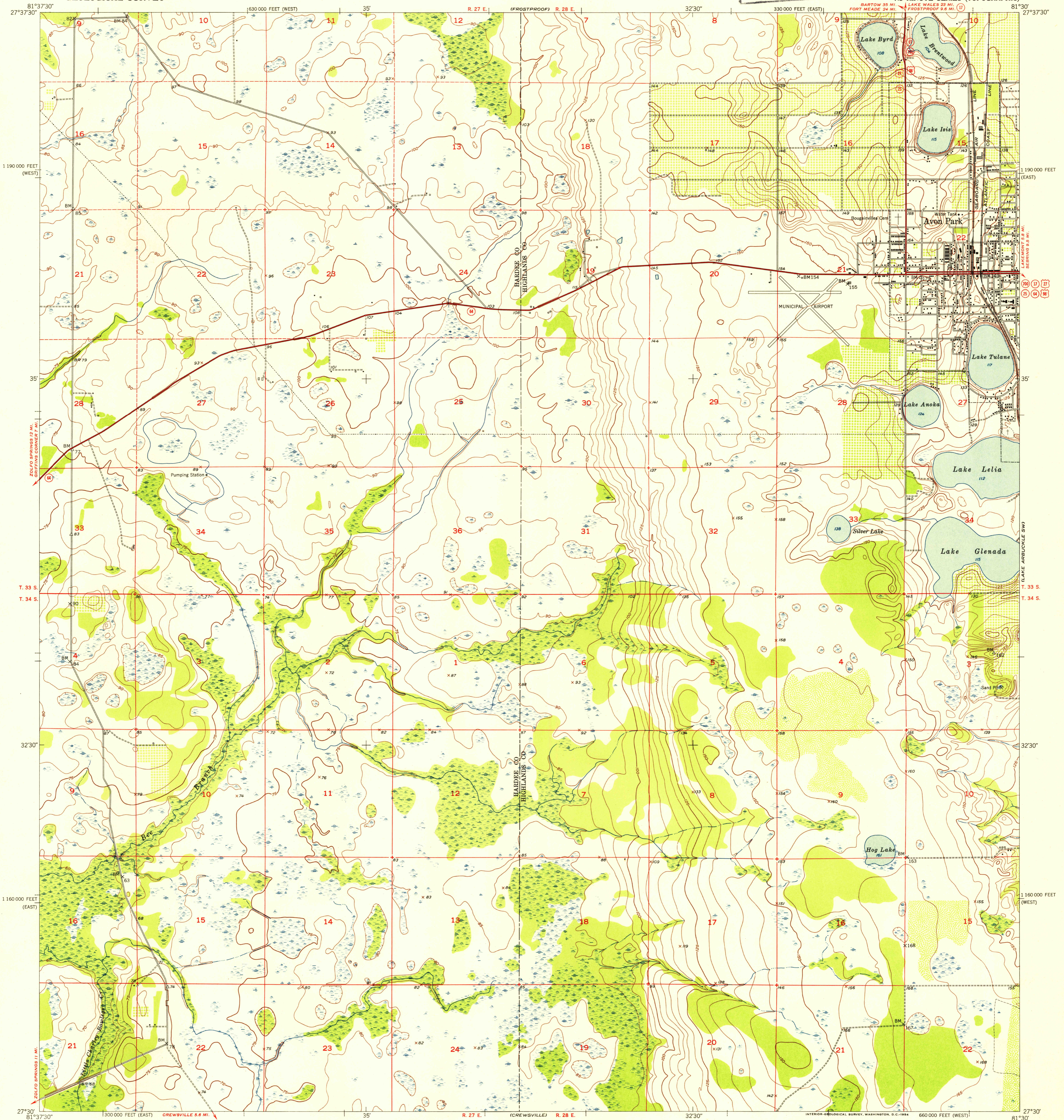


FILE COPY
Reproduction and Editing



Mapped, edited, and published by the Geological Survey

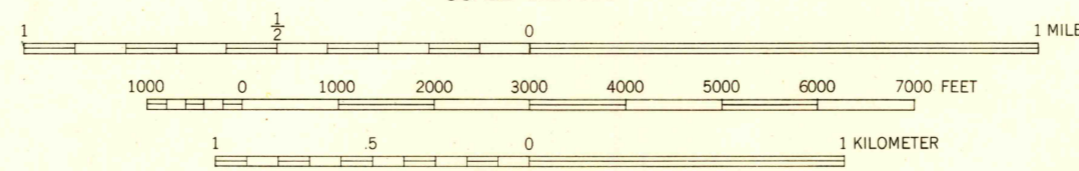
Control by USGS, USC&GS, and USCE

Culture and drainage in part compiled by U. S. Corps of Engineers from aerial photographs taken 1950
Topography by plane-table surveys 1953

Polyconic projection. 1927 North American datum
10,000-foot grids based on Florida coordinate system,
east and west zones

Dashed land lines indicate approximate locations

TRUE NORTH
MAGNETIC NORTH
APPROXIMATE MEAN
DECLINATION, 1953



SCALE 1:24000
CONTOUR INTERVAL 5 FEET
DATUM IS MEAN SEA LEVEL



QUADRANGLE LOCATION

USGS
Historical File
Topographic Division
FILE COPY
Reproduction and Editing

ROAD CLASSIFICATION	
Heavy-duty	4 LANE 16 LANE
Medium-duty	4 LANE 16 LANE
Light-duty	Unimproved dirt
U. S. Route	State Route

AVON PARK, FLA.
N2730-W8130/7.5
1953

APR 20 1954