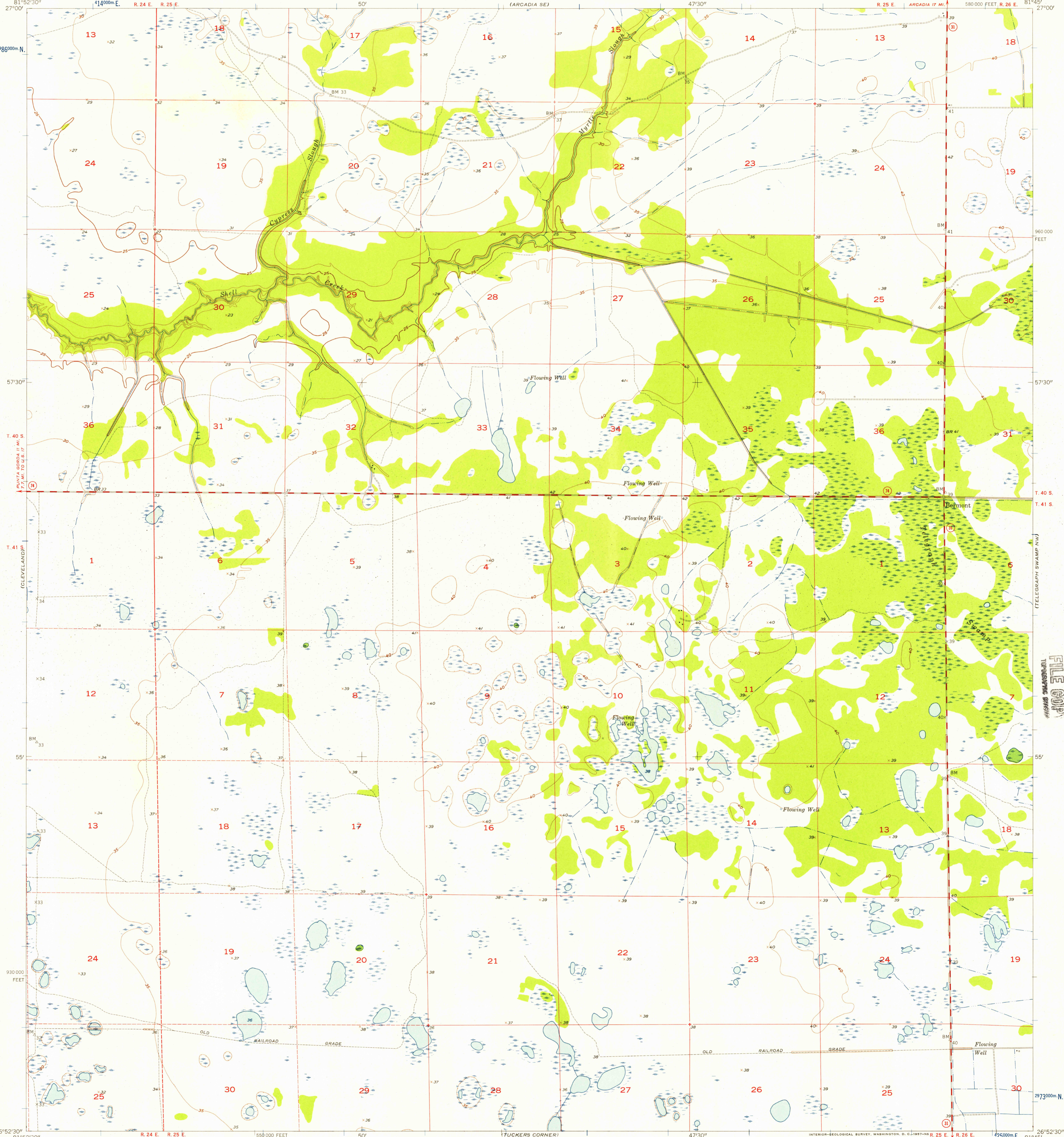


(FT. ORDEN)  
2986000m N  
57'30"  
T. 40 S  
T. 41  
55'  
930 000 FEET  
26°52'30"

UNITED STATES  
DEPARTMENT OF THE INTERIOR  
GEOLOGICAL SURVEY

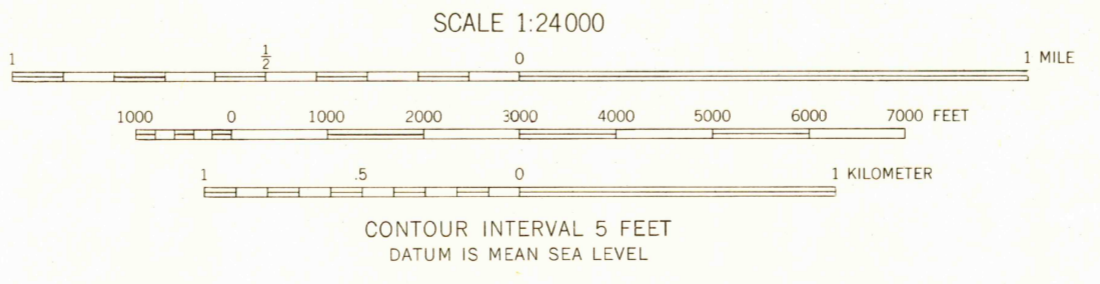
BERMONT QUADRANGLE  
FLORIDA—CHARLOTTE CO.  
7.5 MINUTE SERIES (TOPOGRAPHIC)

(LONG ISLAND MARSH SW)  
580 000 FEET R. 26 E. 81°45'  
T. 40 S. T. 41 S. 55' 2973000m N (TELEGRAPH SWAMP)  
U.S.G.S. FILE COPY TOPOGRAPHIC DIVISION



Mapped, edited, and published by the Geological Survey  
Control by USGS and USC&GS  
Culture and drainage in part compiled from aerial photographs taken 1951. Topography by planetable surveys 1956  
Polyconic projection. 1927 North American datum  
10,000-foot grid based on Florida coordinate system, west zone  
1000-meter Universal Transverse Mercator grid ticks, zone 17, shown in blue  
Dashed land lines indicate approximate locations

TRUE NORTH  
MAGNETIC NORTH  
APPROXIMATE MEAN DECLINATION, 1956



USGS Historical File Topographic Division  
ROAD CLASSIFICATION  
Medium-duty Light-duty  
Unimproved dirt  
State Route



THIS MAP COMPLIES WITH NATIONAL MAP ACCURACY STANDARDS  
FOR SALE BY U. S. GEOLOGICAL SURVEY, WASHINGTON 25, D. C.  
A FOLDER DESCRIBING TOPOGRAPHIC MAPS AND SYMBOLS IS AVAILABLE ON REQUEST

U.S.G.S. FILE COPY TOPOGRAPHIC DIVISION

BERMONT, FLA.  
N 2652.5—W 8145.7/7.5  
1956

AUG - 5 1957  
2205