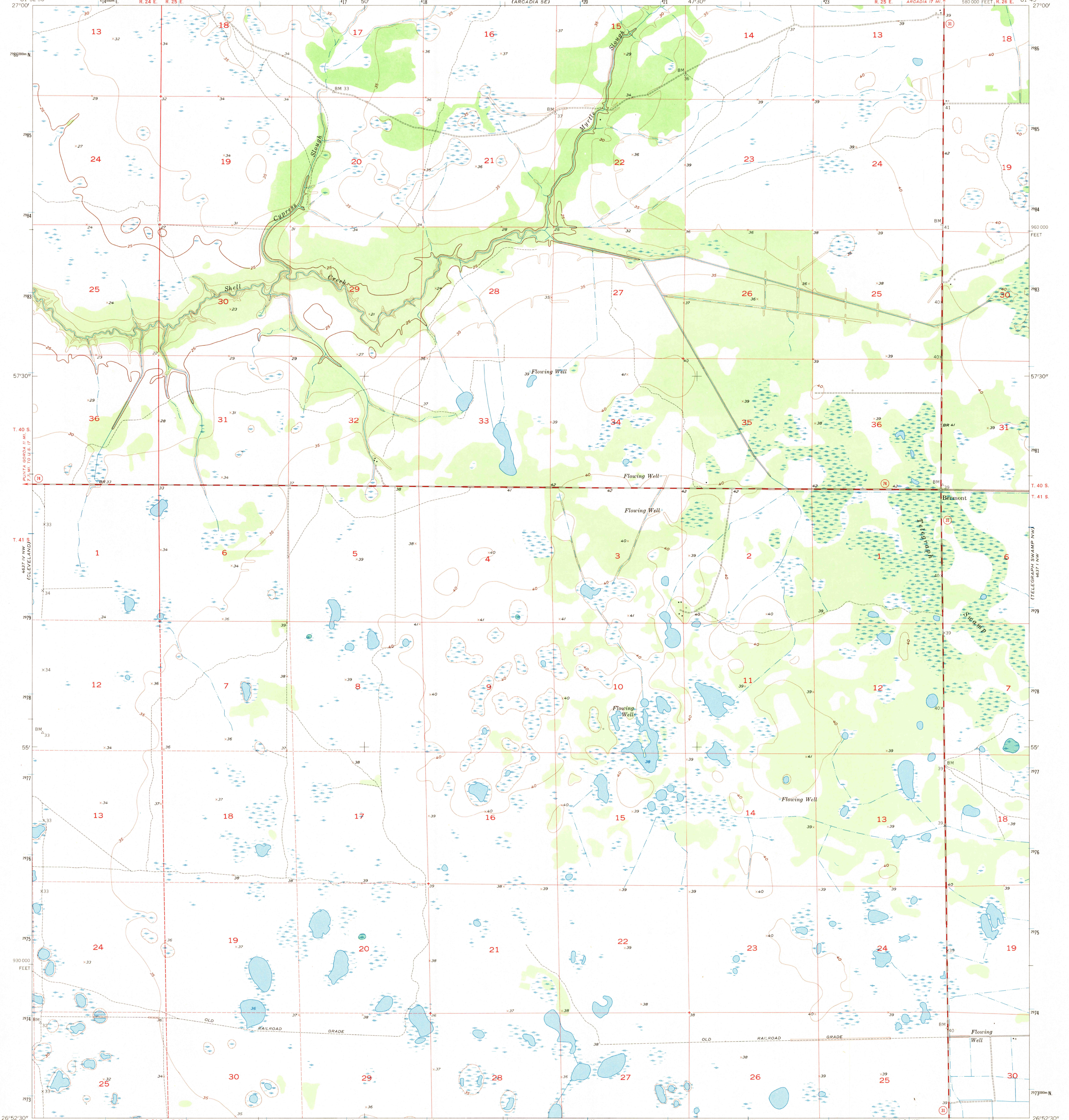


3600 FT. OGDEN

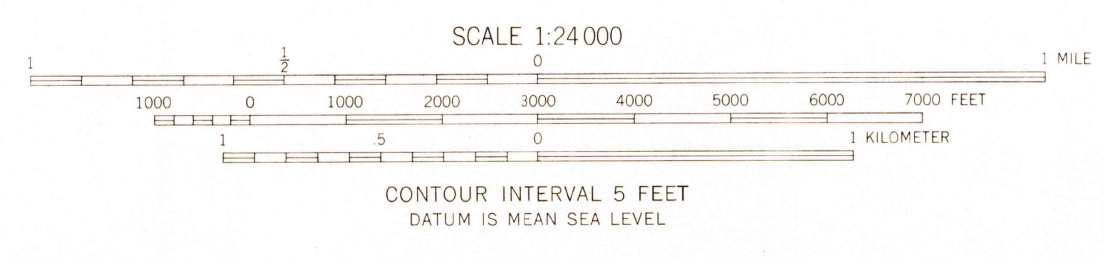
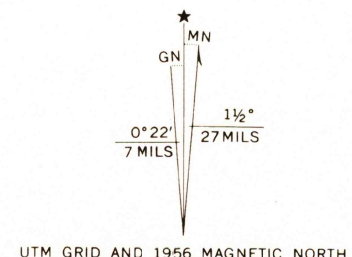
UNITED STATES  
DEPARTMENT OF THE INTERIOR  
GEOLOGICAL SURVEY

BERMONT QUADRANGLE  
FLORIDA—CHARLOTTE CO.  
7.5 MINUTE SERIES (TOPOGRAPHIC)

3600 FT. OGDEN  
LONG ISLAND  
MARSH SW



Mapped, edited, and published by the Geological Survey  
Control by USGS and USC&GS  
Culture and drainage in part compiled from aerial photographs  
taken 1951. Topography by planetable surveys 1956  
Polyconic projection. 1927 North American datum  
10,000-foot grid based on Florida coordinate system, west zone  
1000-meter Universal Transverse Mercator grid ticks,  
zone 17, shown in blue  
Dashed land lines indicate approximate locations



USGS  
Historical File  
Topographic Division

ROAD CLASSIFICATION  
Medium-duty ——— Light-duty ———  
Unimproved dirt ———  
State Route ○



U.S.G.S.  
FILE COPY  
TOPOGRAPHIC DIVISION  
HISTORICAL

BERMONT, FLA.  
N 2652.5—W 8145/7.5  
1956  
JUL 27 1971  
HISTORICAL

THIS MAP COMPLIES WITH NATIONAL MAP ACCURACY STANDARDS  
FOR SALE BY U. S. GEOLOGICAL SURVEY, WASHINGTON, D. C. 20242  
A FOLDER DESCRIBING TOPOGRAPHIC MAPS AND SYMBOLS IS AVAILABLE ON REQUEST

AMS 4637 IV NE—SERIES W847