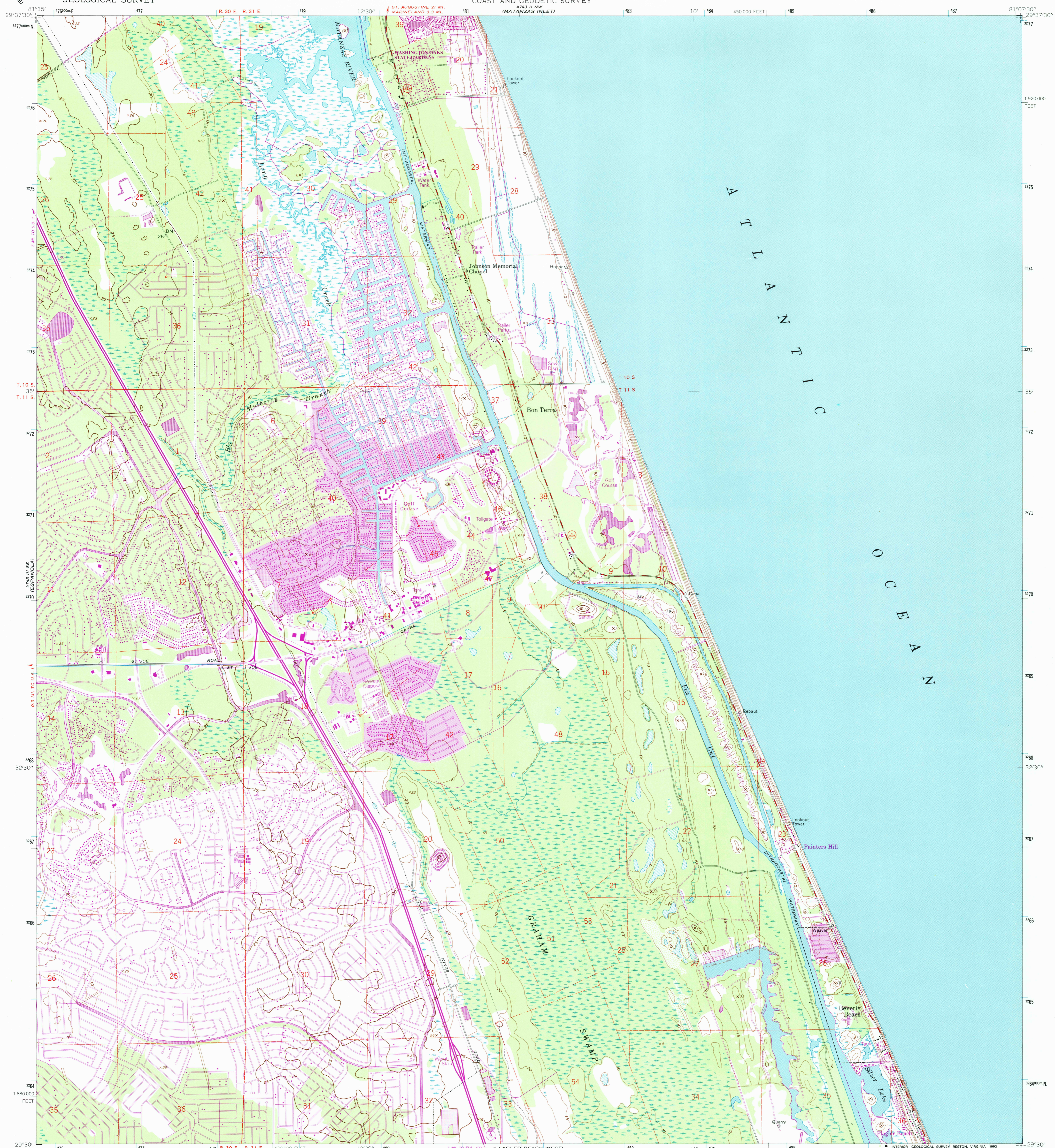


4743 III SE
ESPANOLA

UNITED STATES
DEPARTMENT OF THE INTERIOR
GEOLOGICAL SURVEY

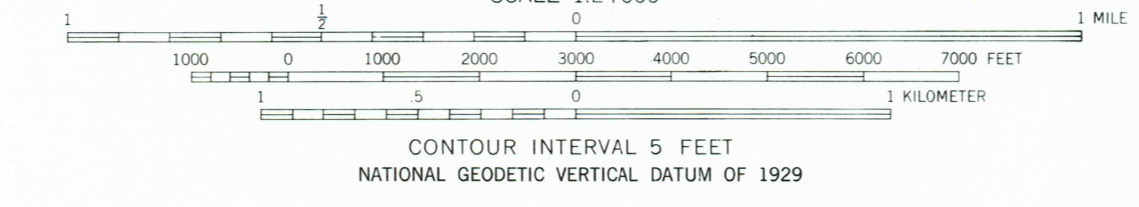
UNITED STATES
DEPARTMENT OF COMMERCE
COAST AND GEODETIC SURVEY
6743 II NW
(MATANZAS INLET)

BEVERLY BEACH QUADRANGLE
FLORIDA—FLAGLER CO.
7.5 MINUTE SERIES (TOPOGRAPHIC)



Mapped by U. S. Coast and Geodetic Survey
Edited and published by the Geological Survey
Control by USC&GS
Culture and drainage in part compiled from aerial photographs taken 1952 and 1956. Topography by planetable surveys 1952. Field check 1956.
Projection and 10,000-foot grid ticks: Florida coordinate system, east zone (transverse Mercator)
1000-meter Universal Transverse Mercator grid ticks, zone 17, shown in blue 1927 North American Datum (NAD 27)
North American Datum of 1983 (NAD 83) is shown by dashed corner ticks. The values of the shift between NAD 27 and NAD 83 for 7.5-minute intersections are given in USGS Bulletin 1875.
Dashed land lines indicate approximate locations.

UTM GRID AND 1983 MAGNETIC NORTH DECLINATION AT CENTER OF SHEET
Revisions shown in purple and woodland compiled in cooperation with State of Florida agencies from aerial photographs taken 1989 and other sources. Contours not revised. This information not field checked. Map edited 1992.
Purple tint indicates extension of urban area.



THIS MAP COMPLIES WITH NATIONAL MAP ACCURACY STANDARDS
FOR SALE BY U. S. GEOLOGICAL SURVEY, DENVER, COLORADO 80225, OR RESTON, VIRGINIA 22092
A FOLDER DESCRIBING TOPOGRAPHIC MAPS AND SYMBOLS IS AVAILABLE ON REQUEST

ROAD CLASSIFICATION

Primary highway, hard surface	Light-duty road, hard or improved surface
Secondary highway, hard surface	Unimproved road

Interstate Route U. S. Route State Route

BEVERLY BEACH, FLA.

29081-E2-TF-024
1956
REVISED 1992
DMA 4743 II SW—SERIES V847

MAR 1993

USGS Library
Reston, VA.
Topo Archive