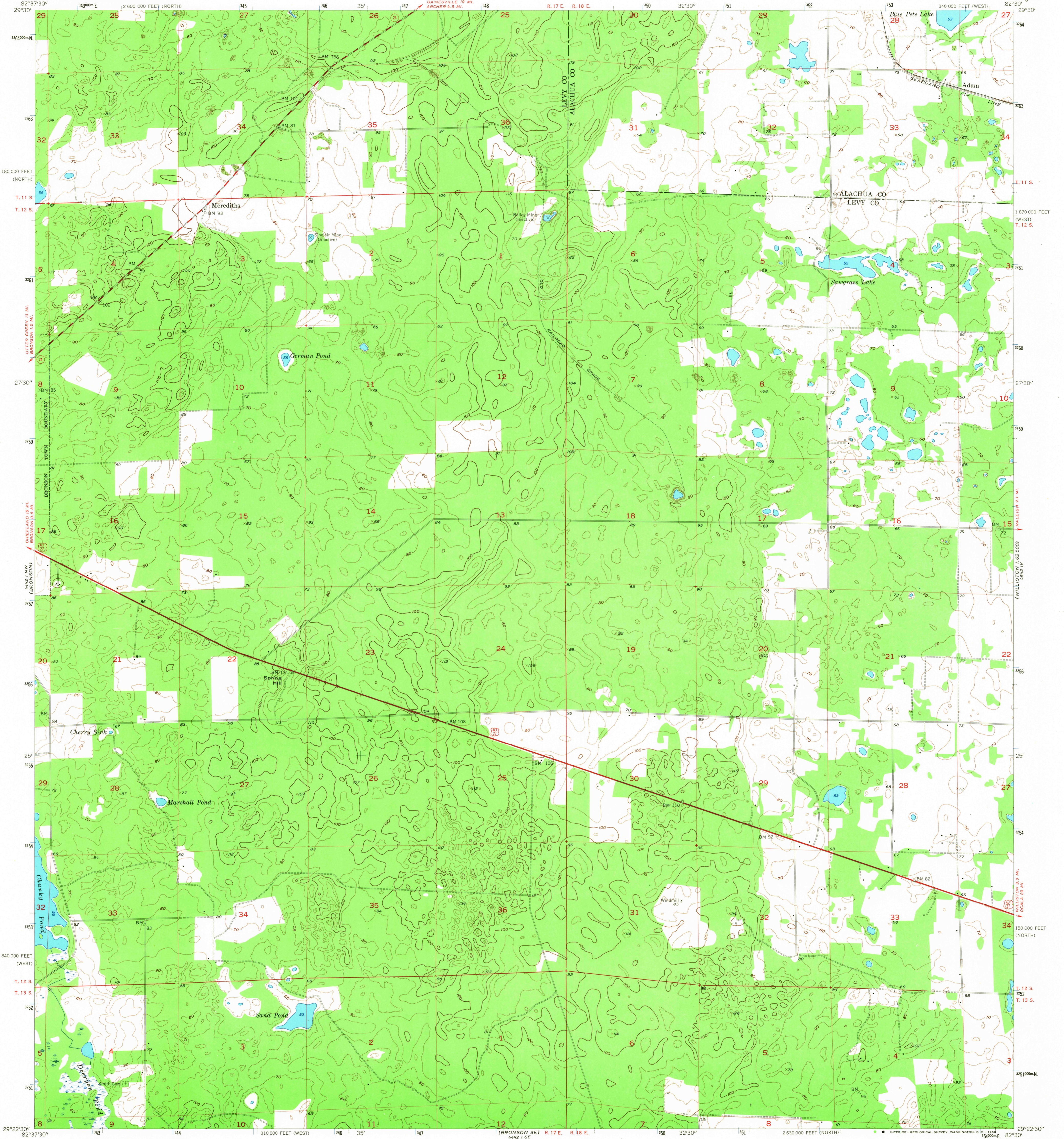
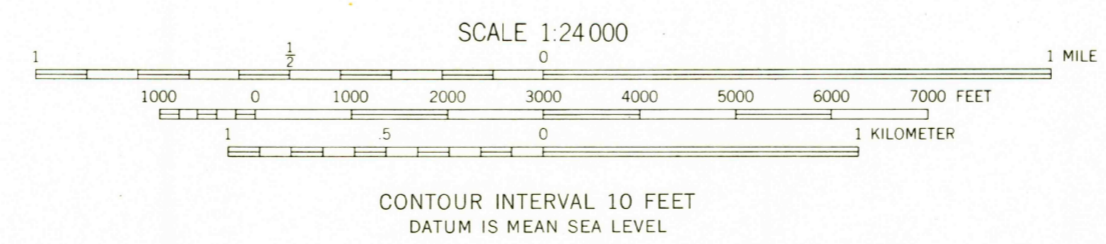
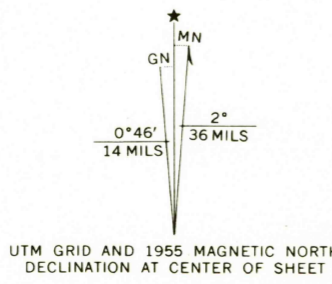


May 11, 1962
4442 NE-1



Mapped, edited, and published by the Geological Survey
Control by USGS, USC&GS, and Florida Geodetic Survey
Culture and drainage in part compiled from aerial photographs
taken 1951. Topography by planetable surveys 1953-1955
Polyconic projection. 1927 North American datum
10,000-foot grids based on Florida coordinate system,
north and west zones.
1000-meter Universal Transverse Mercator grid ticks,
zone 17, shown in blue



ROAD CLASSIFICATION

Heavy-duty	Light-duty
Medium-duty	Unimproved dirt
U.S. Route	State Route

U.S.G.S.
FILE COPY
TOPOGRAPHIC DIVISION

USGS
Historical File
Topographic Division

BRONSON NE, FLA.
N 2922.5 - W 8230 / 7.5
1955
AMS 4442 1 NE-SERIES V847

THIS MAP COMPLIES WITH NATIONAL MAP ACCURACY STANDARDS
FOR SALE BY U.S. GEOLOGICAL SURVEY, WASHINGTON, D.C. 20242
A FOLDER DESCRIBING TOPOGRAPHIC MAPS AND SYMBOLS IS AVAILABLE ON REQUEST

2185
APR 26 1968