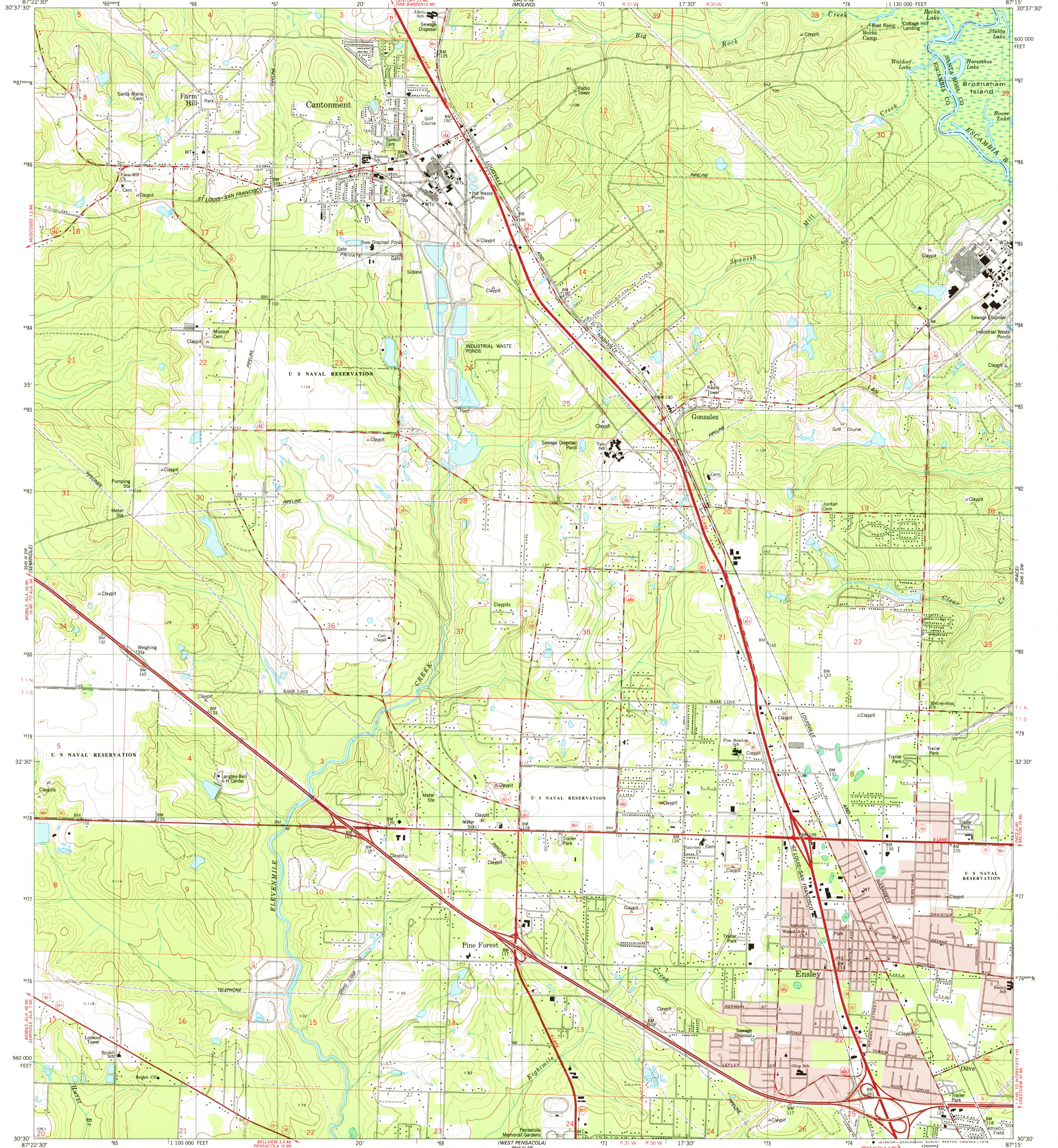
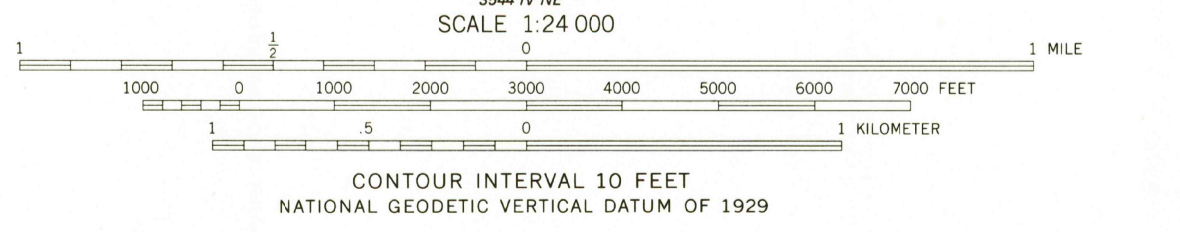
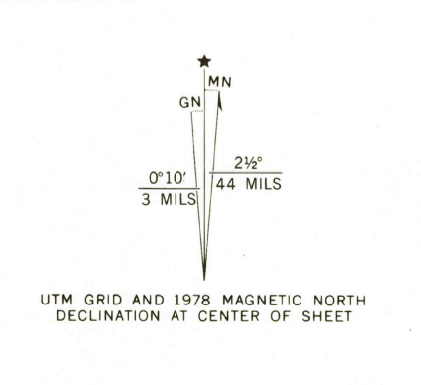


356 1/4 W 6" PACE

SEE 1/4 W WALLACE



Mapped, edited, and published by the Geological Survey
 Control by USGS, NOS/NOAA, USCE, and Florida Department of Transportation
 Topography by photogrammetric methods from aerial photographs taken February 1974. Field checked 1975. Map edited 1978
 Projection and 10,000-foot grid ticks: Florida coordinate system, north zone (Lambert conformal conic)
 1000-meter Universal Transverse Mercator grid, zone 16 1927 North American datum
 Fine red dashed lines indicate selected fence and field lines where generally visible on aerial photographs. This information is unchecked
 Red tint indicates areas in which only landmark buildings are shown



ROAD CLASSIFICATION

Primary highway, hard surface	Light-duty road, hard or improved surface
Secondary highway, hard surface	Unimproved road
Interstate Route	U. S. Route
	State Route

USGS Historical File Topographic Division
 CANTONMENT, FLA.
 SE/4 MUSCOGEE 15' QUADRANGLE
 N3030-W8715/7.5
 1978 JUN 2 1978
 AMS 3545 III SE—SERIES V847

THIS MAP COMPLIES WITH NATIONAL MAP ACCURACY STANDARDS FOR SALE BY U. S. GEOLOGICAL SURVEY, RESTON, VIRGINIA 22092
 A FOLDER DESCRIBING TOPOGRAPHIC MAPS AND SYMBOLS IS AVAILABLE ON REQUEST