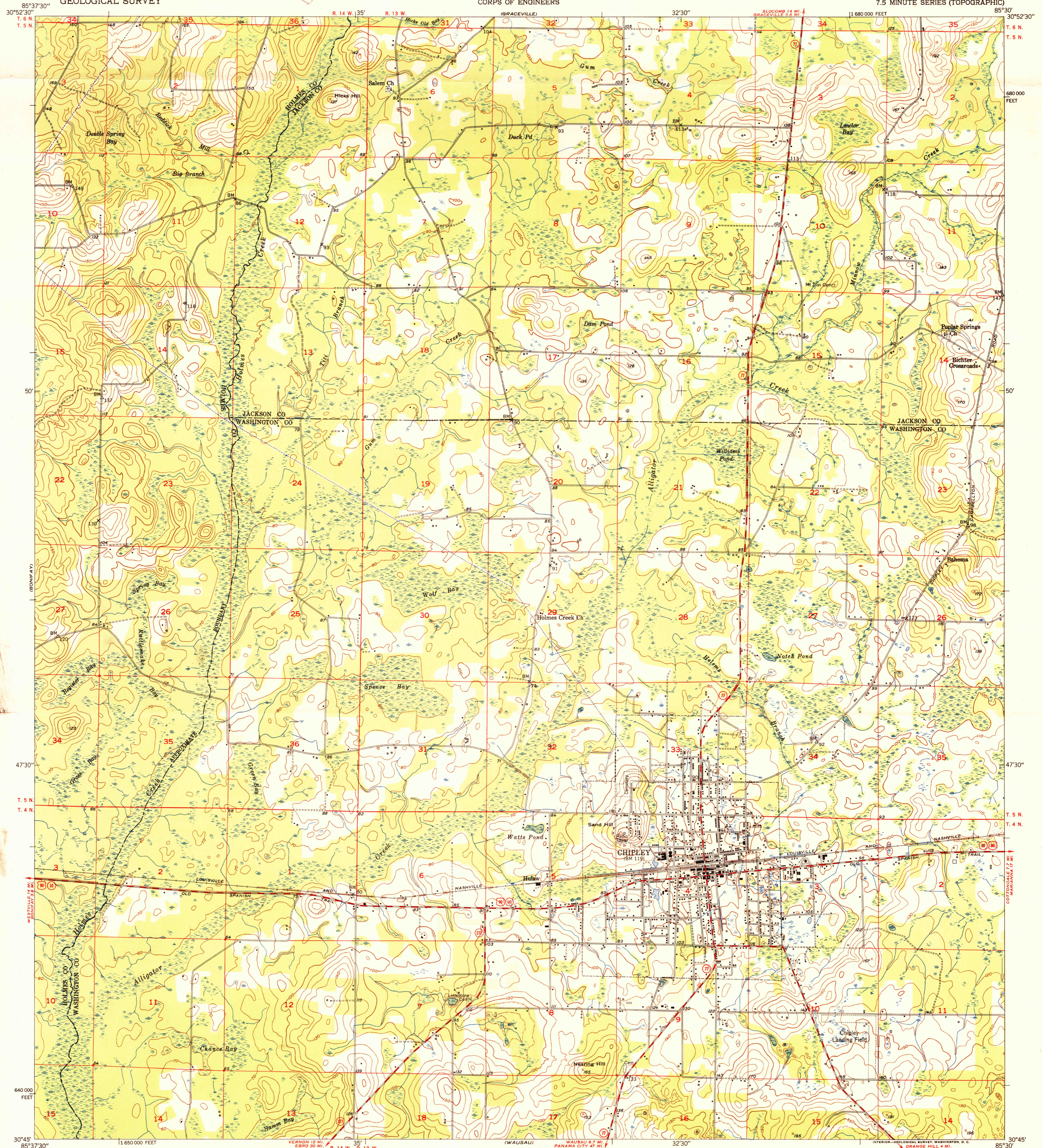


U.S.G.S.  
FILE COPY  
Inspection and Editing

UNITED STATES  
DEPARTMENT OF THE INTERIOR  
GEOLOGICAL SURVEY

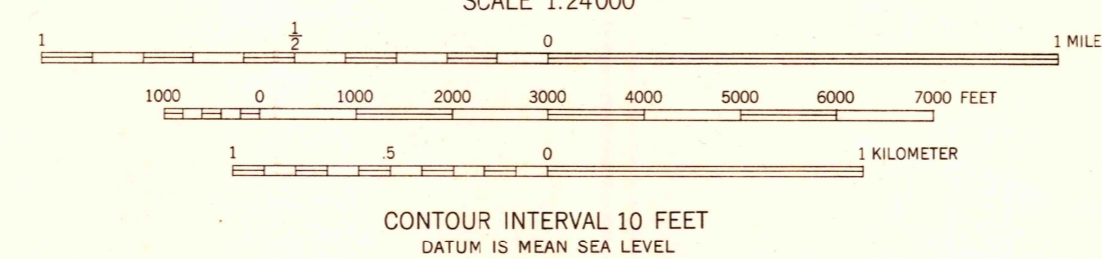
UNITED STATES  
DEPARTMENT OF THE ARMY  
CORPS OF ENGINEERS

CHIPLEY QUADRANGLE  
FLORIDA  
7.5 MINUTE SERIES (TOPOGRAPHIC)



Mapped, edited, and published by the Geological Survey  
Control by USGS and USC&GS  
Culture and drainage in part compiled from  
aerial photographs taken 1947  
Topography by plane-table methods 1950  
Polyconic projection. 1927 North American datum  
10,000-foot grid based on Florida coordinate system,  
north zone

TRUE NORTH  
MAGNETIC NORTH  
APPROXIMATE MEAN  
DECLINATION, 1950



ROAD CLASSIFICATION  
Heavy-duty... 4 LANE 6 LANE  
Medium-duty... 4 LANE 6 LANE  
Light duty...  
Unimproved dirt  
U.S. Route  
State Route

THIS MAP COMPLIES WITH NATIONAL MAP ACCURACY STANDARDS  
FOR SALE BY U.S. GEOLOGICAL SURVEY, WASHINGTON 25, D. C.  
A FOLDER DESCRIBING TOPOGRAPHIC MAPS AND SYMBOLS IS AVAILABLE ON REQUEST

USGS  
Historical File  
Topographic Division

CHIPLEY, FLA.  
N3045-W8530/7.5  
EDITION OF 1951

U.S.G.S.  
FILE COPY  
Inspection and Editing