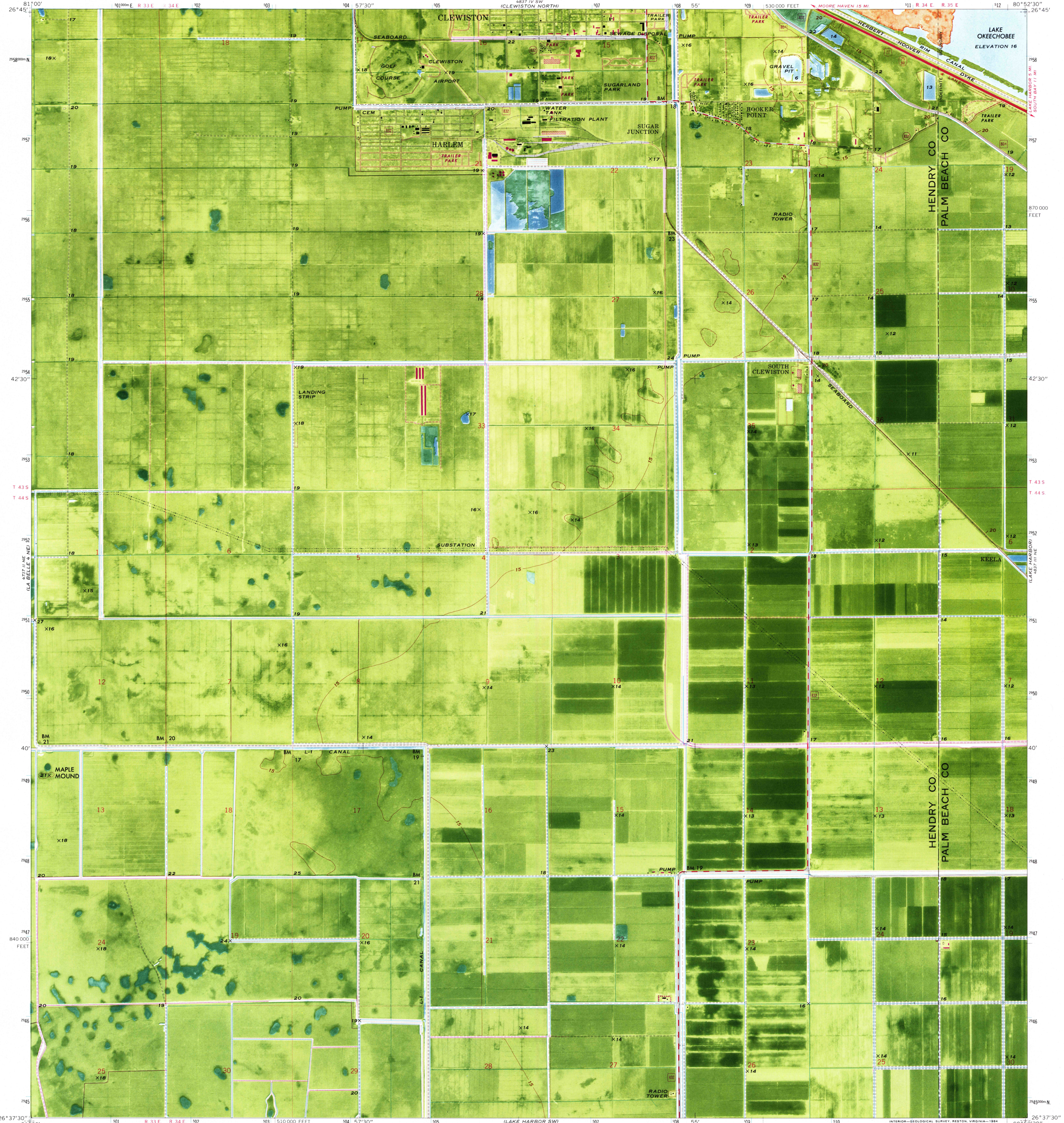


MOORE HAVEN

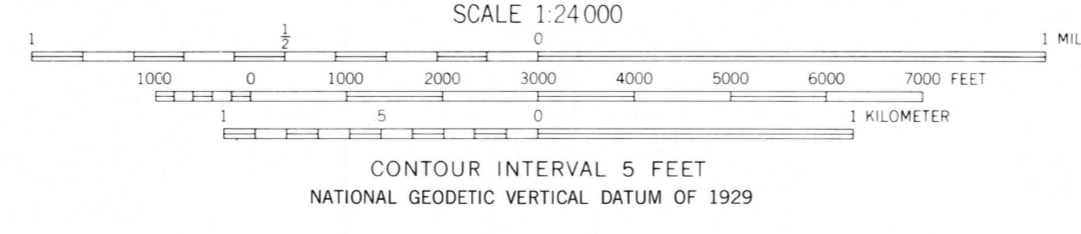
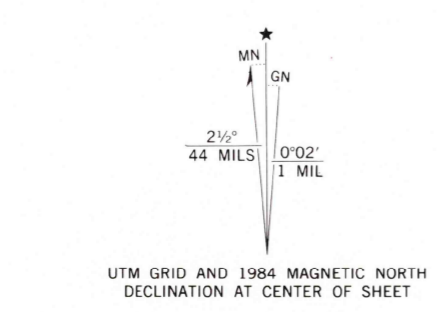
UNITED STATES
DEPARTMENT OF THE INTERIOR
GEOLOGICAL SURVEY

STATE OF FLORIDA

CLEWISTON SOUTH QUADRANGLE
FLORIDA
7.5 MINUTE SERIES ORTHOPHOTOMAP (TOPOGRAPHIC)



Mapped, edited, and published by the Geological Survey
Control by USGS, NOS/NOAA, and USCE
Orthophotomap by photogrammetric methods from aerial photograph
taken February 7, 1980. Topography by planetable surveys 1970
Polyconic projection. 10,000-foot grid ticks based on Florida
coordinate system, east zone
1000-meter Universal Transverse Mercator grid ticks,
zone 17, shown in blue
1927 North American Datum
To place on the predicted North American Datum 1983
move the projection lines 35 meters south and
20 meters west as shown by dashed corner ticks
Dotted land lines established by private survey
Where omitted, land lines have not been established
Only landmark buildings indicated in urban area



- ROAD CLASSIFICATION
- Primary highway, hard surface
 - Secondary highway, hard surface
 - Light-duty road, hard or improved surface
 - Unimproved road
 - Interstate Route
 - U. S. Route
 - State Route
 - County Route

Revisions shown in purple compiled in cooperation
with State of Florida agencies from aerial photographs
taken February 1980 and other sources
This information not field checked. Map edited 1984

THIS MAP COMPLIES WITH NATIONAL MAP ACCURACY STANDARDS
FOR SALE BY U. S. GEOLOGICAL SURVEY, RESTON, VIRGINIA 22092
A FOLDER DESCRIBING TOPOGRAPHIC MAPS AND SYMBOLS IS AVAILABLE ON REQUEST

CLEWISTON SOUTH, FLA.
26080-F8-0M-024

1970
PHOTOREVISED 1984
DMA 4837 III NW—SERIES V8470

LA BELLE & SEJ
4371 56

LAKE HARBOR SW
4837 III SE