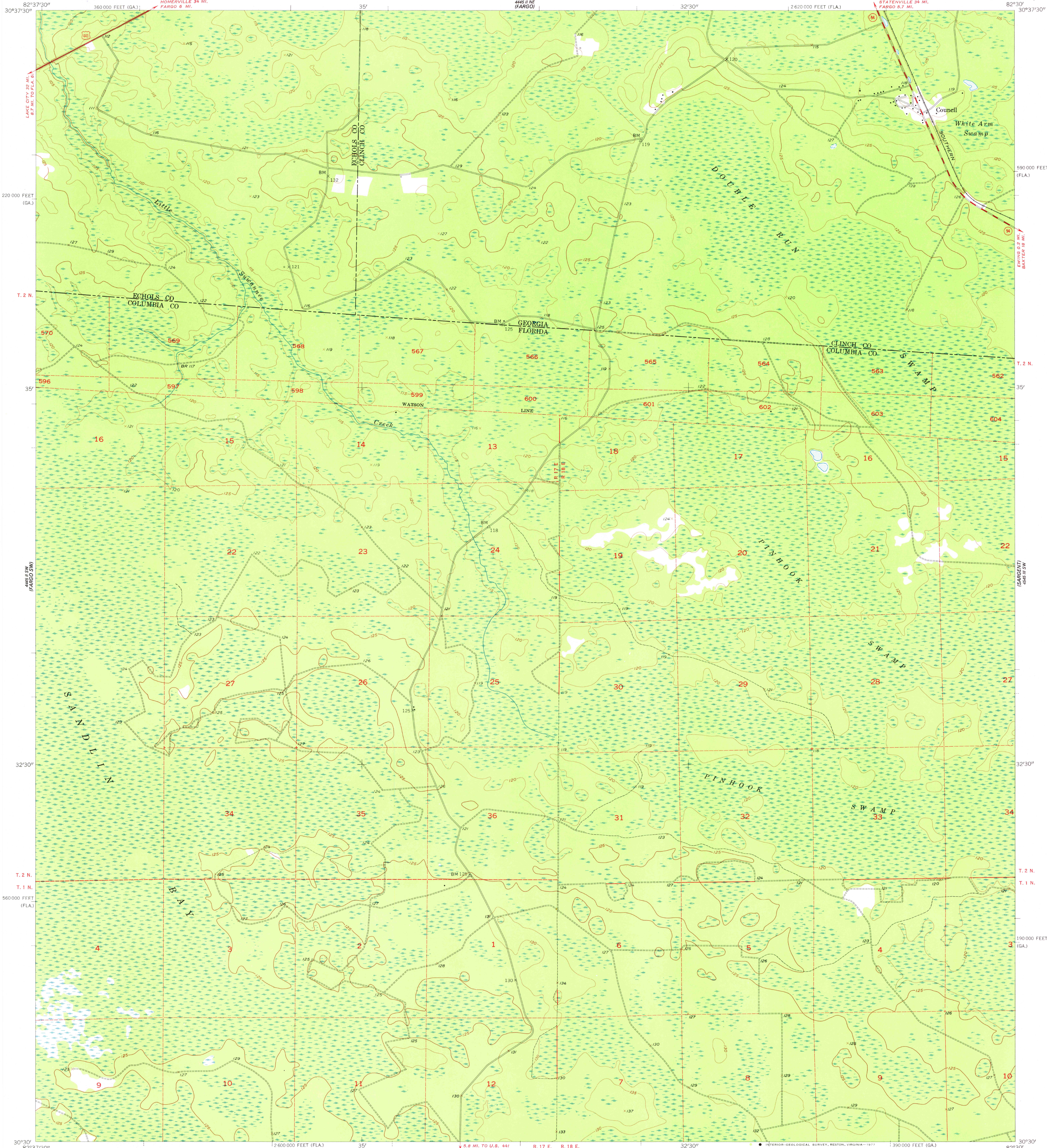
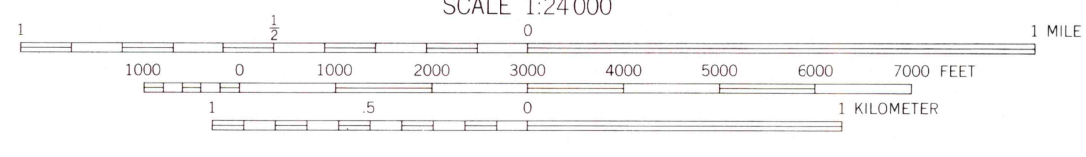


UNITED STATES
DEPARTMENT OF THE INTERIOR
GEOLOGICAL SURVEY

COUNCIL QUADRANGLE
FLORIDA—GEORGIA
7.5 MINUTE SERIES (TOPOGRAPHIC)



Mapped, edited, and published by the Geological Survey
Control by USGS and USC&GS
Culture and drainage in part compiled from aerial photographs
taken 1952. Topography by planetable surveys 1955
Polyconic projection. 1927 North American datum
10,000-foot grids based on Florida coordinate system,
north zone, and Georgia coordinate system, east zone
Dashed land lines indicate approximate locations
Certain land lines unsurveyed in T. 2 N.—R. 17 E.



ROAD CLASSIFICATION
Heavy-duty ——— + LANE 16 LANE Light-duty ———
Medium-duty ——— + LANE 16 LANE Unimproved dirt ———
U.S. Route State Route



COUNCIL, FLA.-GA. DEC. 23 1976
N 3030—W 8230/7.5

USGS
Historical File
Topographic Division

1955
AMS 4445 II SE—SERIES V847

THIS MAP COMPLIES WITH NATIONAL MAP ACCURACY STANDARDS
FOR SALE BY U.S. GEOLOGICAL SURVEY, RESTON, VIRGINIA 22092
A FOLDER DESCRIBING TOPOGRAPHIC MAPS AND SYMBOLS IS AVAILABLE ON REQUEST