

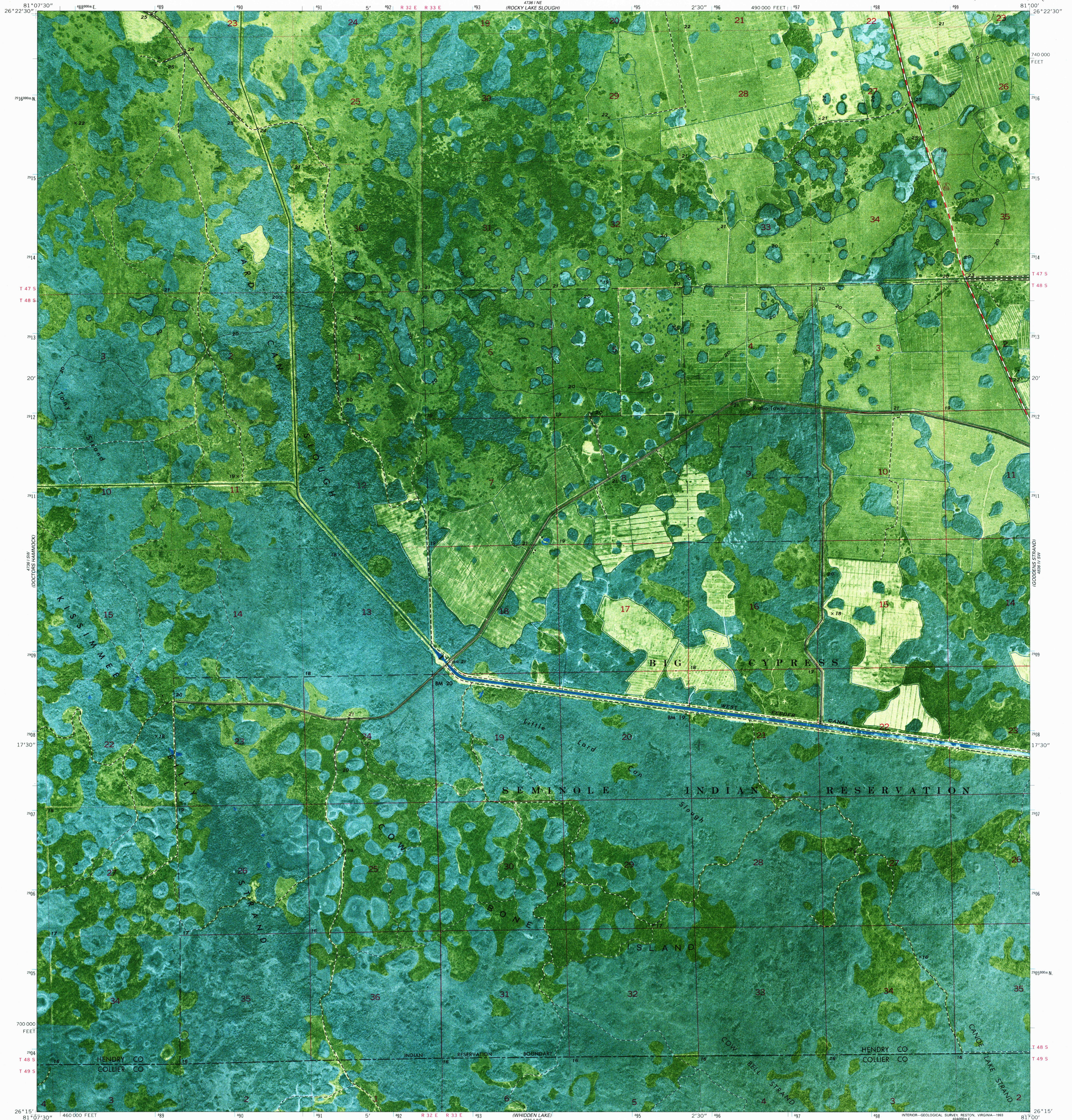
4288 SW
COW BONE ISLAND
HAMMOCK

UNITED STATES
DEPARTMENT OF THE INTERIOR
GEOLOGICAL SURVEY

STATE OF FLORIDA

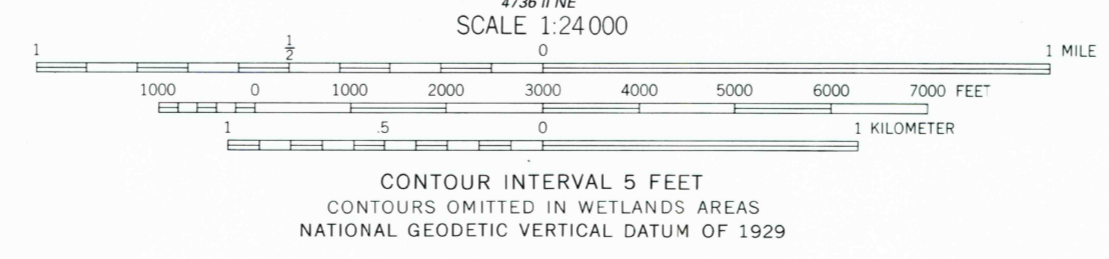
COW BONE ISLAND QUADRANGLE
FLORIDA
7.5 MINUTE SERIES ORTHOPHOTOMAP (TOPOGRAPHIC)

4288 NW
LITTLE CYPRESS SWAMP



Mapped, edited, and published by the Geological Survey
Control by NOS/NOAA, and USCE
Orthophotomap prepared from aerial photograph taken
January 16, 1971. Field Checked 1974
Projection and 10,000-foot grid ticks: Florida coordinate
system, east zone (transverse Mercator)
1000-metre Universal Transverse Mercator grid ticks,
zone 17, shown in blue. 1927 North American datum
Dotted land lines established by private survey
Where omitted, land lines have not been established
or are not shown because of insufficient data
The difference between 1927 North American Datum and North American
Datum of 1983 (NAD 83) for 7.5-minute intersections is given in USGS
Bulletin 1875. The NAD 83 is shown by dashed corner ticks

Map photoinspected 1990
No major culture or drainage changes observed



THIS MAP COMPLIES WITH NATIONAL MAP ACCURACY STANDARDS
FOR SALE BY U.S. GEOLOGICAL SURVEY
DENVER, COLORADO 80225, OR RESTON, VIRGINIA 22092
A FOLDER DESCRIBING TOPOGRAPHIC MAPS AND SYMBOLS IS AVAILABLE ON REQUEST

ROAD CLASSIFICATION
Primary highway, hard surface — Light-duty road, hard or improved surface
Secondary highway, hard surface — Unimproved road
Trails —
Interstate Route — U. S. Route — State Route

COW BONE ISLAND, FLA.
(FORMERLY IMMOKALEE 1 SE)
26081-C1-OM-024
1974
PHOTOINSPECTED 1990
DMA 4736 1 SE - SERIES V8470

USGS PHOTO HISTORICAL MAP ARCHIVES
FEB 28 1994
REC'D FILE COPY

LITTLE CYPRESS SWAMP

COW BONE ISLAND