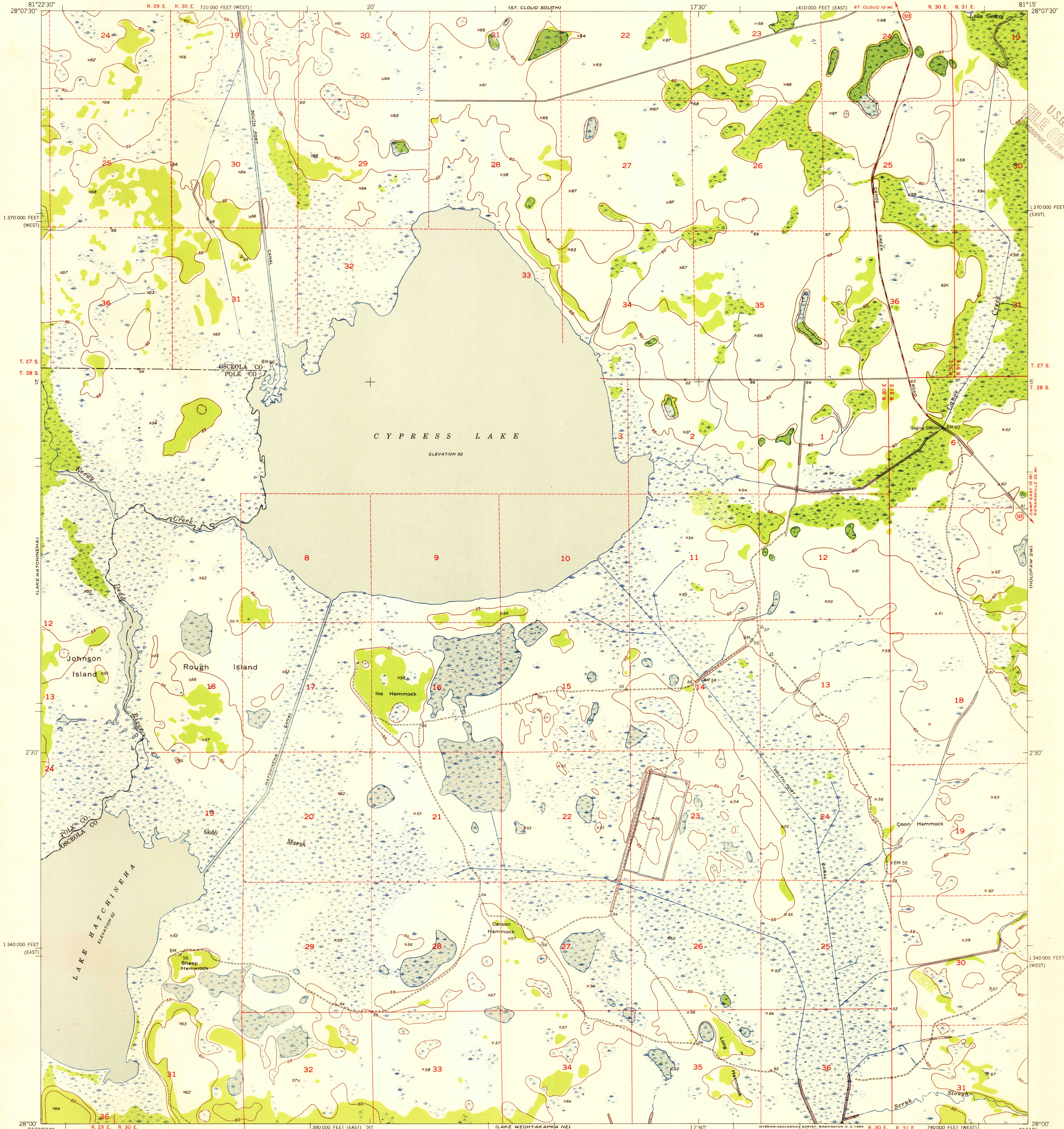


UNITED STATES  
DEPARTMENT OF THE INTERIOR  
GEOLOGICAL SURVEY

UNITED STATES  
DEPARTMENT OF THE ARMY  
CORPS OF ENGINEERS

CYPRESS LAKE QUADRANGLE  
FLORIDA  
7.5 MINUTE SERIES (TOPOGRAPHIC)



Maped by U. S. Corps of Engineers  
Edited and published by the Geological Survey  
Control by USC&GS and USCE  
Culture and drainage in part compiled from aerial photographs  
taken 1950. Topography by plane-table surveys 1950-1951  
Field check by the Geological Survey 1953

Polyconic projection. 1927 North American datum  
10,000-foot grids based on Florida coordinate system,  
east and west zones

Dashed land lines indicate approximate locations  
Certain land lines unsurveyed in T. 28 S., R. 29 E.  
and T. 28 S., R. 30 E.

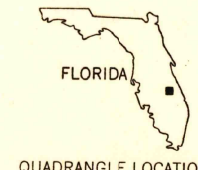
TRUE NORTH  
MAGNETIC NORTH  
APPROXIMATE MEAN  
DECLINATION, 1953

SCALE 1:24000  
1 1000 0 1000 2000 3000 4000 5000 6000 7000 FEET  
1 5 0 1 KILOMETER  
CONTOUR INTERVAL 5 FEET  
DATUM IS MEAN SEA LEVEL

THIS MAP COMPLIES WITH NATIONAL MAP ACCURACY STANDARDS  
FOR SALE BY U. S. GEOLOGICAL SURVEY, WASHINGTON 25, D. C.  
A FOLDER DESCRIBING TOPOGRAPHIC MAPS AND SYMBOLS IS AVAILABLE ON REQUEST

USGS  
Historical File  
Topographic Division  
U.S.G.S.  
FILE COPY  
TOPOGRAPHIC DIVISION

ROAD CLASSIFICATION  
Heavy-duty 4 LANE 16 LANE Light-duty  
Medium-duty 4 LANE 16 LANE Unimproved dirt  
U. S. Route State Route



CYPRESS LAKE, FLA.  
N 2800 - W 8115 / 7.5

1953  
DEC 2 1954  
2665