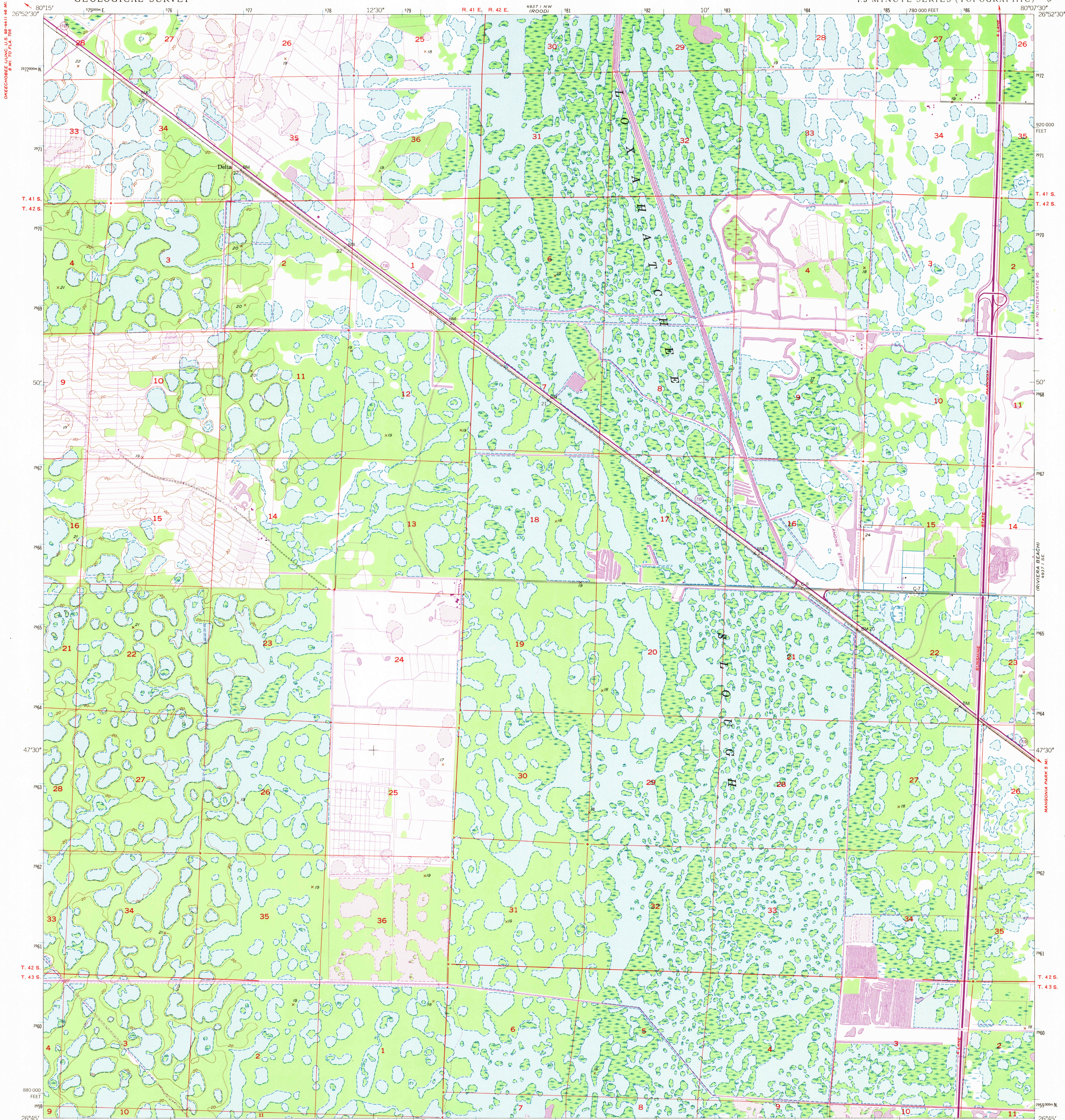


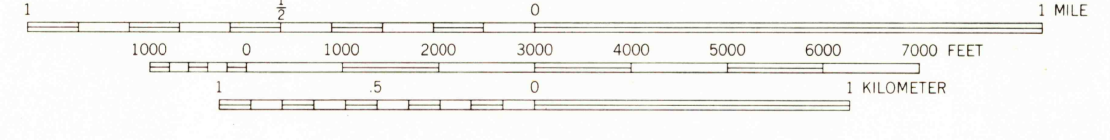
UNITED STATES  
DEPARTMENT OF THE INTERIOR  
GEOLOGICAL SURVEY

DELTA QUADRANGLE  
FLORIDA-PALM BEACH CO.  
7.5 MINUTE SERIES (TOPOGRAPHIC)



Mapped by U.S. Coast & Geodetic Survey  
Edited and published by the Geological Survey  
Control by USC&GS  
Culture and drainage in part compiled from  
aerial photographs taken 1942 and 1945  
Topography by plane-table methods 1945. Field check 1945  
Polyconic projection, 1927 North American datum  
10,000-foot grid based on Florida coordinate system,  
east zone  
No distinction is made between dwellings, barns,  
commercial and industrial buildings  
1000-meter Universal Transverse Mercator grid ticks,  
zone 17, shown in blue

UTM GRID AND 1967 MAGNETIC NORTH  
DECLINATION AT CENTER OF SHEET  
Revisions shown in purple and recompilation of woodland areas  
made by Geological Survey from aerial photographs taken 1967  
This information not field checked



CONTOUR INTERVAL 5 FEET  
DATUM IS MEAN SEA LEVEL

THIS MAP COMPLIES WITH NATIONAL MAP ACCURACY STANDARDS  
FOR SALE BY U.S. GEOLOGICAL SURVEY, WASHINGTON, D. C. 20242  
A FOLDER DESCRIBING TOPOGRAPHIC MAPS AND SYMBOLS IS AVAILABLE ON REQUEST

USGS  
Historical File  
Topographic Division

U.S.G.S.  
FILE COPY  
TOPOGRAPHIC DIVISION

ROAD CLASSIFICATION  
Heavy-duty Light-duty  
Unimproved dirt State Route

DELTA, FLA.  
N2645-W8007.5/7.5  
1945  
PHOTOREVISED 1967  
AMS 4937 1 SW-SERIES 9847

2120  
DEC 17 1968