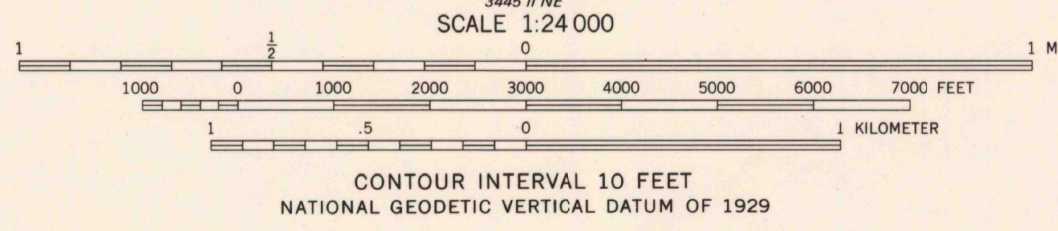
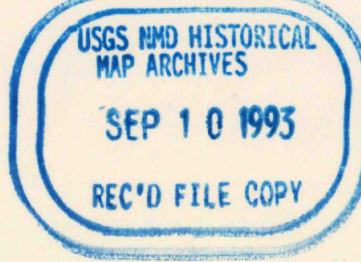


Produced by the United States Geological Survey
Control by USGS and NOS/NOAA
Topography by photogrammetric methods from aerial photographs taken 1974. Field checked 1975. Map edited 1978
Projection: Florida coordinate system, north zone (Lambert conformal conic)
10,000-foot grid ticks: Florida coordinate system, north zone and Alabama coordinate system, west zone
100-meter Universal Transverse Mercator grid ticks, zone 16, shown in blue
1927 North American Datum (NAD 27)
North American Datum of 1983 (NAD 83) is shown by dashed corner ticks
The values of the shift between NAD 27 and NAD 83 for 7.5-minute intersections are given in USGS Bulletin 1875
Fine red dashed lines indicate selected fence and field lines where generally visible on aerial photographs. This information is unchecked
Photospected from 1990 source; no major culture or drainage changes observed. Names revised and boundaries verified 1993

UTM GRID AND 1983 MAGNETIC NORTH DECLINATION AT CENTER OF SHEET
Revisions shown in purple and woodland compiled from aerial photographs taken 1981 and other sources
This information not field checked. Map edited 1985



ROAD CLASSIFICATION
Primary highway, hard surface
Secondary highway, hard surface
Light-duty road, hard or improved surface
Unimproved road
Interstate Route
U. S. Route
State Route



ENON, FLA.-ALA.
SE/4 DYAS 15' QUADRANGLE
30087-G5-TF-024
1978
PHOTOREVISED 1985
MINOR REVISION 1993
DMA 3445 1 SE - SERIES V847

THIS MAP COMPLIES WITH NATIONAL MAP ACCURACY STANDARDS
FOR SALE BY U. S. GEOLOGICAL SURVEY, RESTON, VIRGINIA 22092
A FOLDER DESCRIBING TOPOGRAPHIC MAPS AND SYMBOLS IS AVAILABLE ON REQUEST