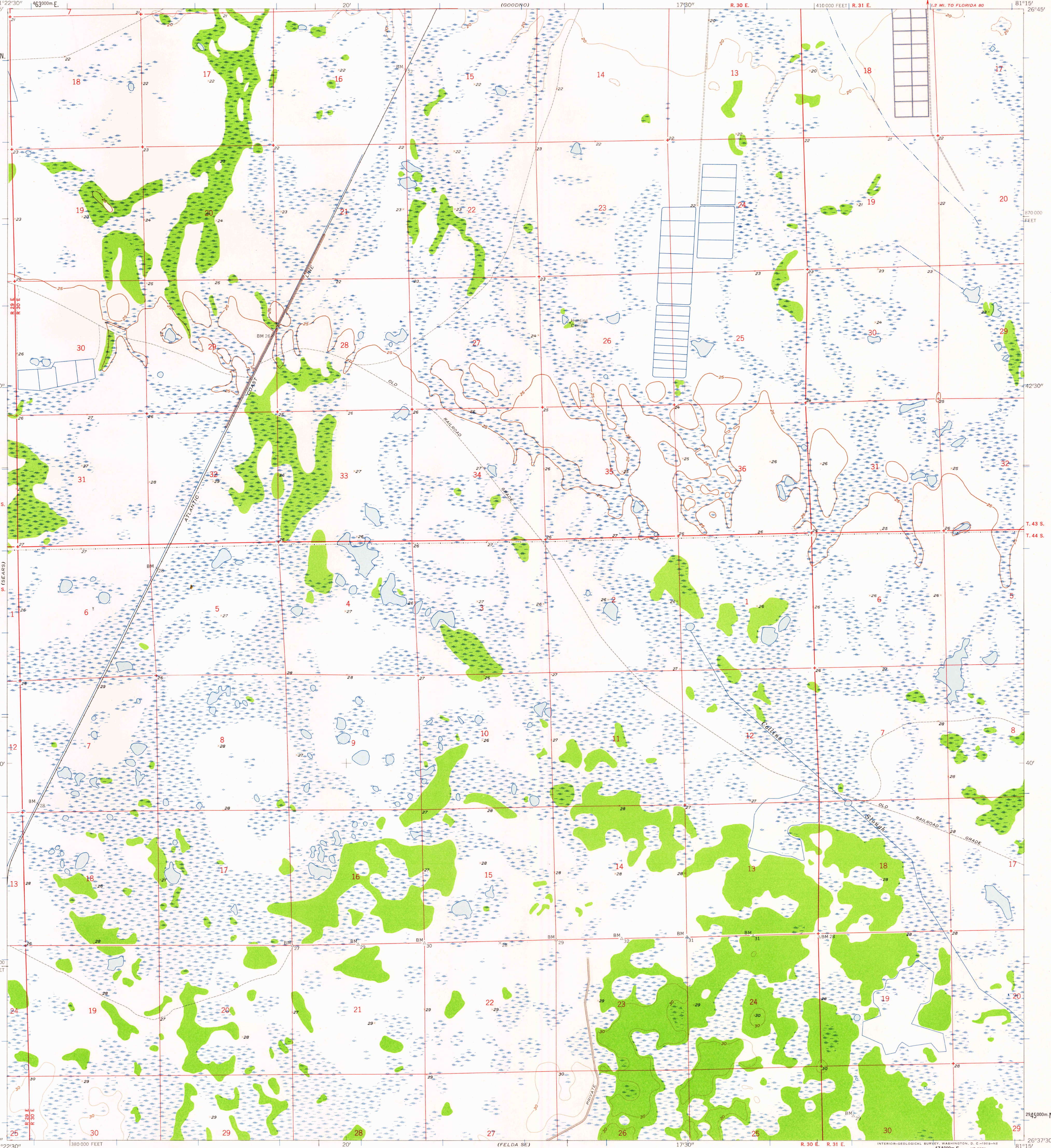


(LA BELLE)
26°45'
26°44'
26°43'
26°42'
26°41'
26°40'
26°39'
26°38'
26°37'30"

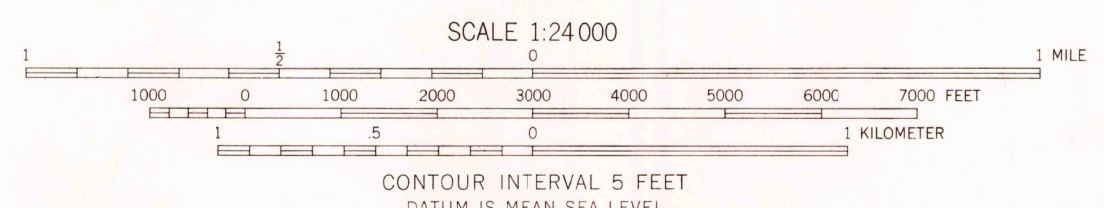
UNITED STATES
DEPARTMENT OF THE INTERIOR
GEOLOGICAL SURVEY

FELDA NE QUADRANGLE
FLORIDA—HENDRY CO.
7.5 MINUTE SERIES (TOPOGRAPHIC)



Mapped, edited, and published by the Geological Survey
Control by USGS and USCS&GS
Culture and drainage in part compiled from aerial photographs
taken 1951-1952. Topography by planetable surveys 1958
Polyconic projection. 1927 North American datum.
10,000-foot grid based on Florida coordinate system, east zone
1000-meter Universal Transverse Mercator grid ticks,
zone 17, shown in blue

TRUE NORTH
MAGNETIC NORTH
APPROXIMATE MEAN
DECLINATION, 1958



USGS
Historical File
Topographic Division



ROAD CLASSIFICATION
Light-duty ———— Unimproved dirt ————

THIS MAP COMPLIES WITH NATIONAL MAP ACCURACY STANDARDS
FOR SALE BY U. S. GEOLOGICAL SURVEY, WASHINGTON 25, D. C.
A FOLDER DESCRIBING TOPOGRAPHIC MAPS AND SYMBOLS IS AVAILABLE ON REQUEST

U.S.G.S.
FILE COPY
TOPOGRAPHIC DIVISION

FELDA NE, FLA.
N2637.5—W8115/7.5
1958

MAR 19 1959

1625