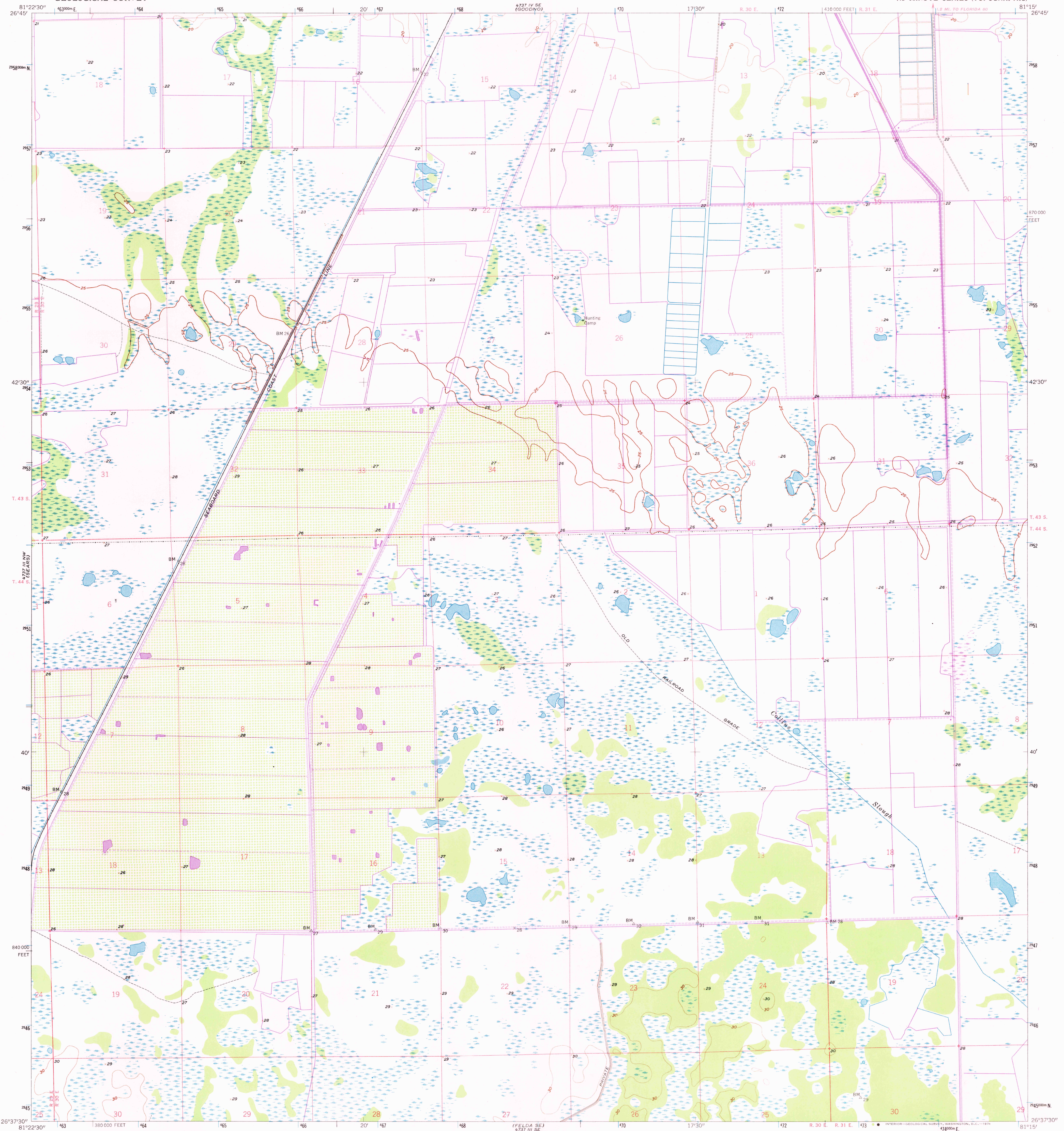


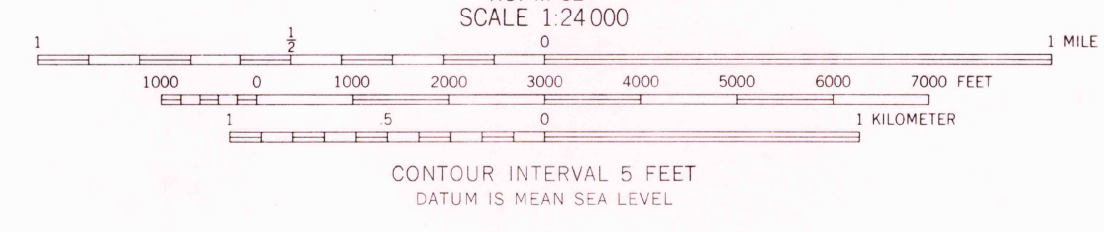
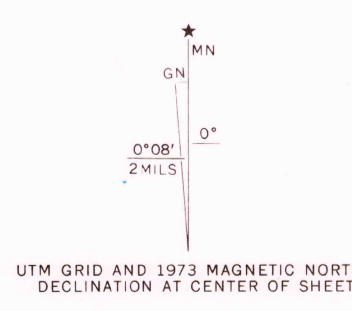
4737 III NW  
(6A 64512)

UNITED STATES  
DEPARTMENT OF THE INTERIOR  
GEOLOGICAL SURVEY

FELDA NE QUADRANGLE  
FLORIDA—HENDRY CO.  
7.5 MINUTE SERIES (TOPOGRAPHIC)



Mapped, edited, and published by the Geological Survey  
Control by USGS and USC&GS  
Culture and drainage in part compiled from aerial photographs  
taken 1951-1952. Topography by planetable surveys 1958  
Polyconic projection, 1927 North American datum  
10,000-foot grid based on Florida coordinate system, east zone  
1000-meter Universal Transverse Mercator grid ticks,  
zone 17, shown in blue  
Revisions shown in purple and recompilation of woodland areas  
compiled from aerial photographs taken 1973  
This information not field checked



ROAD CLASSIFICATION  
Light-duty ————  
Unimproved dirt - - - - -

THIS MAP COMPLIES WITH NATIONAL MAP ACCURACY STANDARDS  
FOR SALE BY U.S. GEOLOGICAL SURVEY, WASHINGTON, D.C. 20242  
A FOLDER DESCRIBING TOPOGRAPHIC MAPS AND SYMBOLS IS AVAILABLE ON REQUEST

USGS  
Historical File  
Topographic Division

FELDA NE, FLA.  
N26375-W8115/7.5  
1958  
PHOTOREVISED 1973  
AMS 4737 III NE—SERIES V847