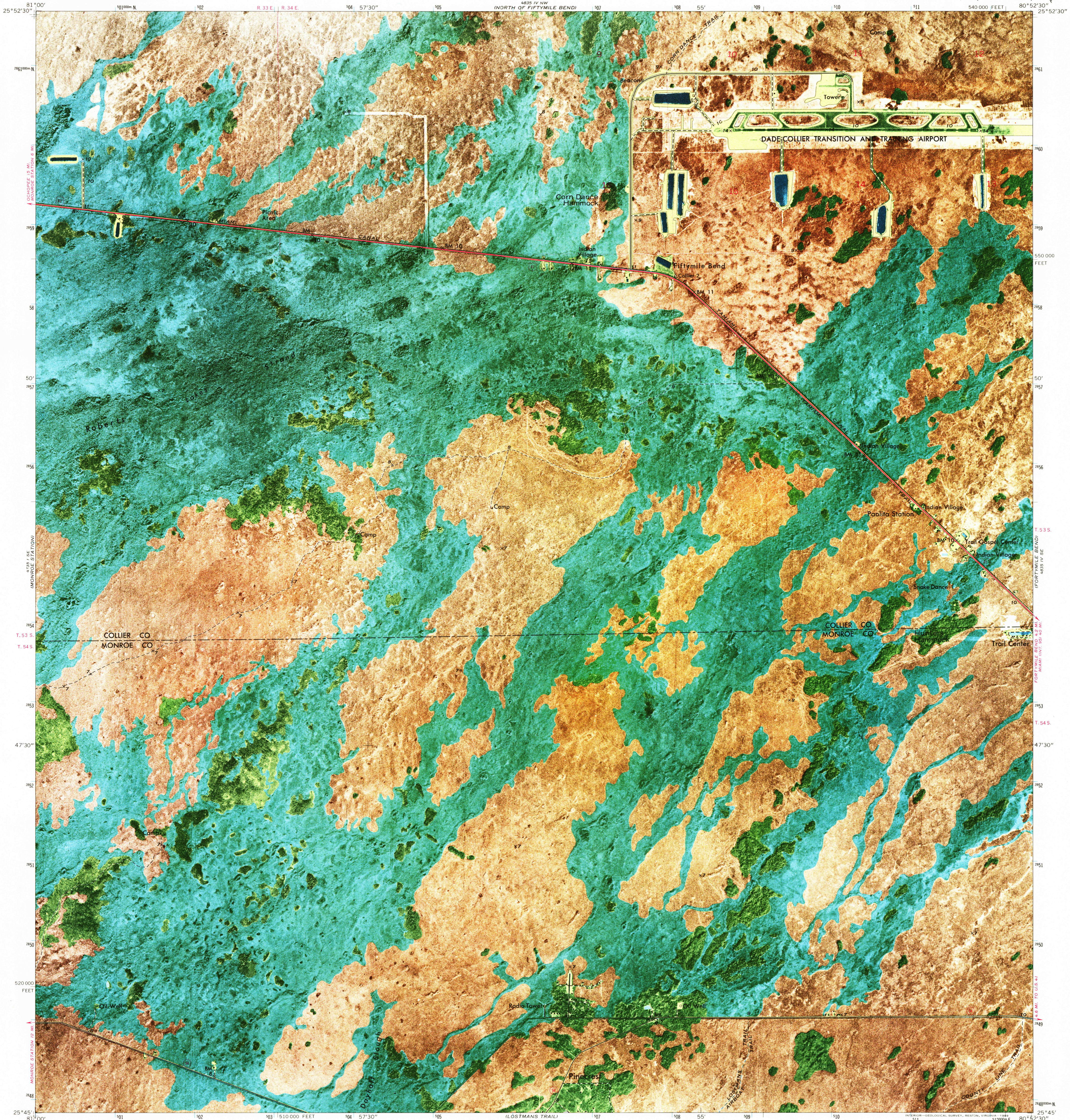
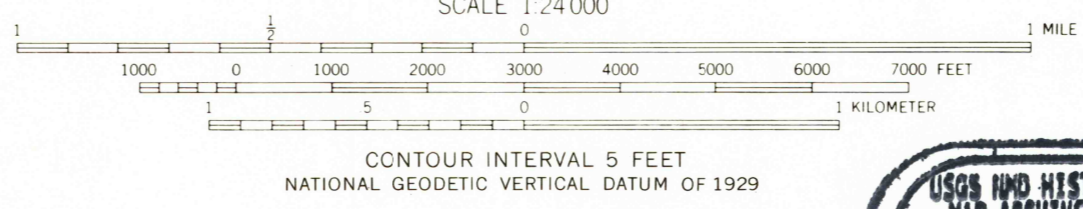
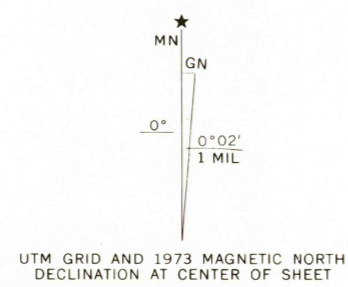


UNITED STATES
DEPARTMENT OF THE INTERIOR
GEOLOGICAL SURVEY

FIFTYMILE BEND QUADRANGLE
FLORIDA
7.5 MINUTE SERIES ORTHOPHOTOMAP (TOPOGRAPHIC)



Mapped, edited, and published by the Geological Survey
Control by USGS and USC&GS
Orthophotomap prepared from aerial photographs taken January 16, 1971
Topography by planetable surveys 1973
Projection and 10,000-foot grid ticks: Florida coordinate system, east zone (transverse Mercator)
1000-meter Universal Transverse Mercator grid ticks, zone 17, shown in blue. 1927 North American datum
Dotted land lines established by private survey
Where omitted, land lines have not been established or are not shown because of insufficient data.
Map photoinspected 1984
No major culture or drainage changes observed



USGS AND HISTORICAL MAP ARCHIVES
JUN 09 1995
REC'D FILE COPY



ROAD CLASSIFICATION

Primary highway, hard surface	Light-duty road, hard or improved surface
Secondary highway, hard surface	Unimproved road
Trails	
Interstate Route	U. S. Route
	State Route

THIS MAP COMPLIES WITH NATIONAL MAP ACCURACY STANDARDS
FOR SALE BY U. S. GEOLOGICAL SURVEY
DENVER, COLORADO 80225, OR RESTON, VIRGINIA 22092
A FOLDER DESCRIBING TOPOGRAPHIC MAPS AND SYMBOLS IS AVAILABLE ON REQUEST

FIFTYMILE BEND, FLA.
25080-G8-OM-024

1973
PHOTOINSPECTED 1984
DMA 4835 IV SW—SERIES V8470

